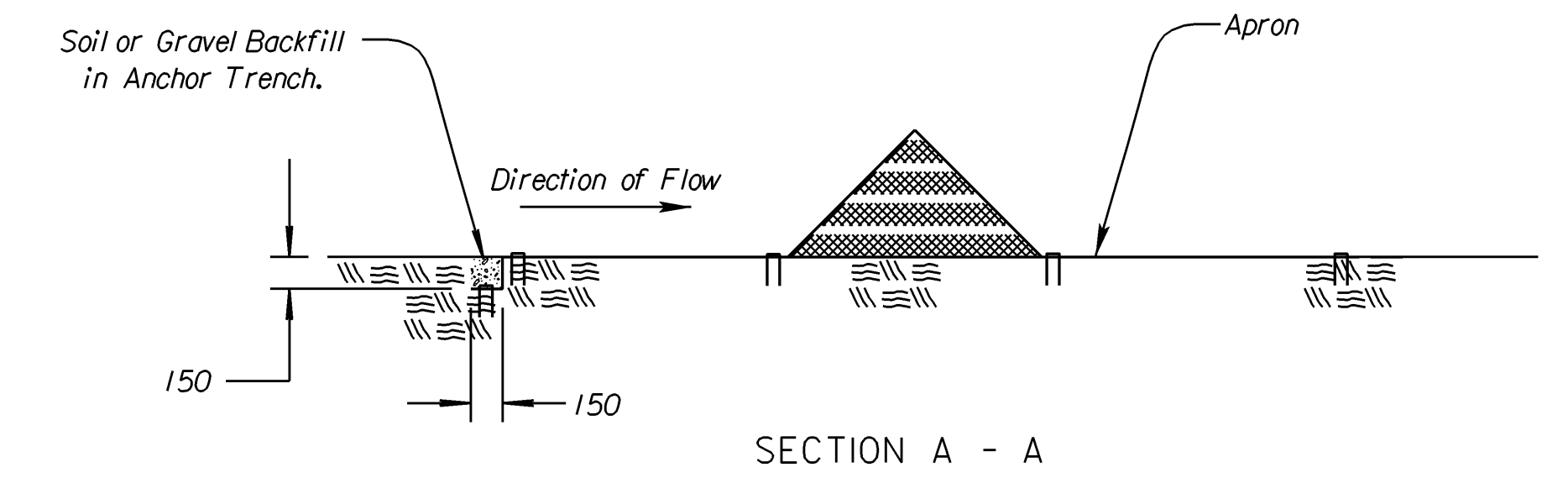
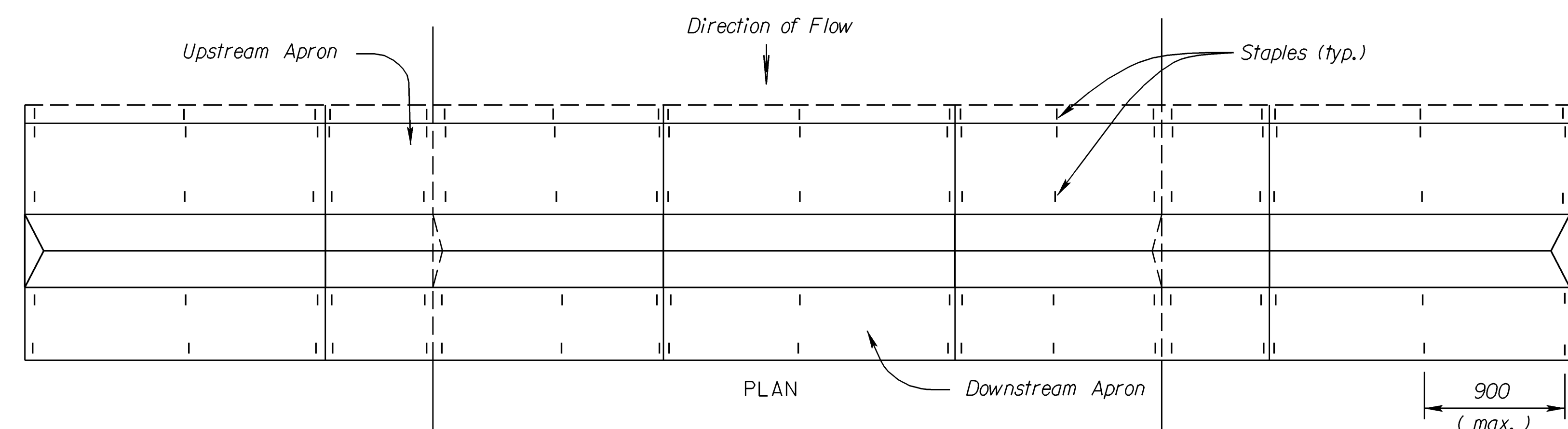
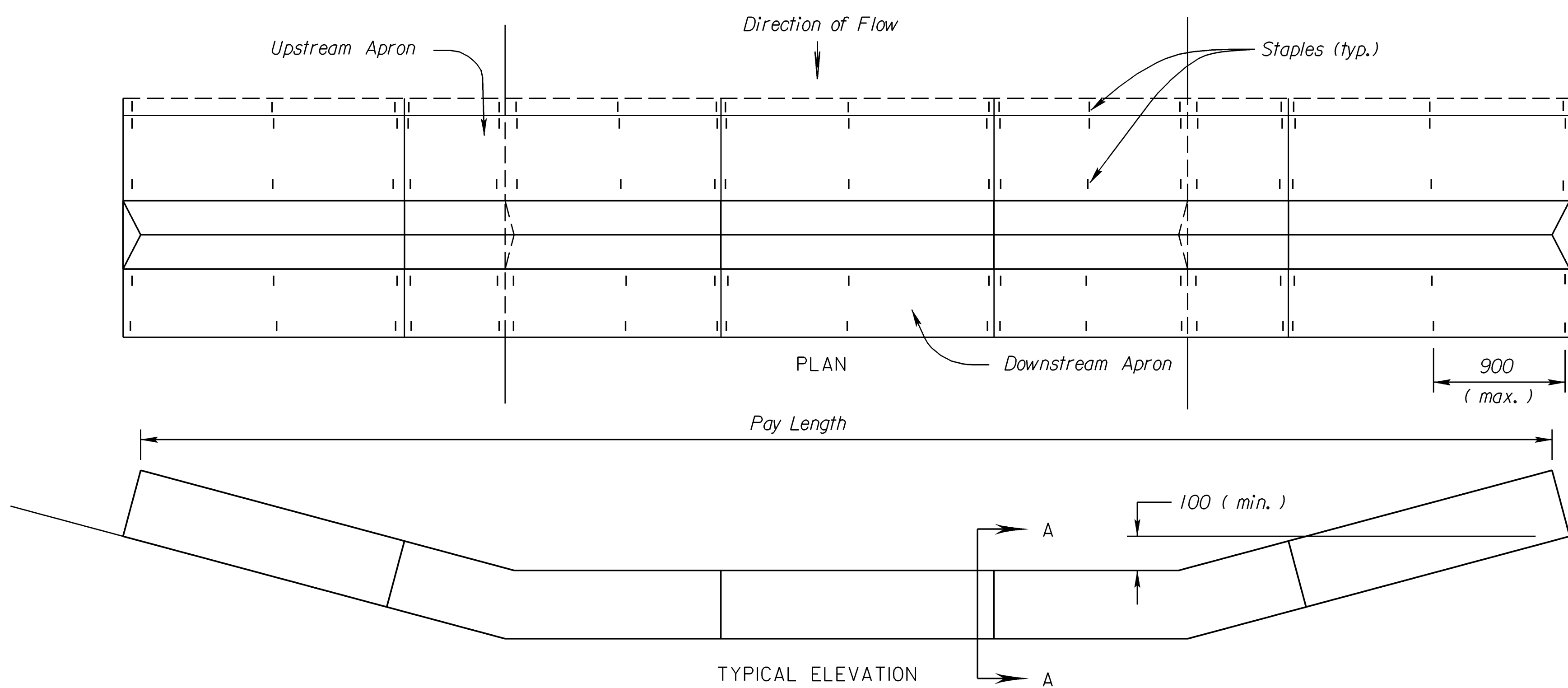
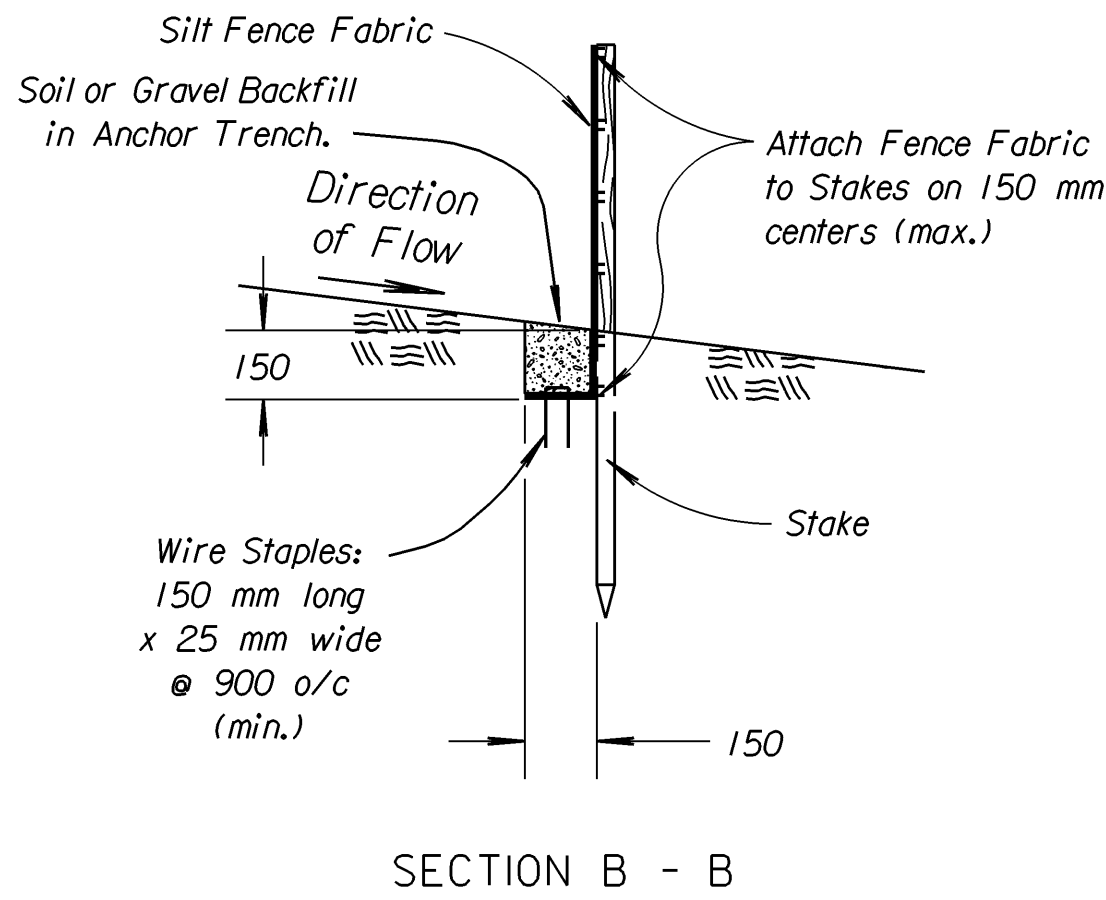
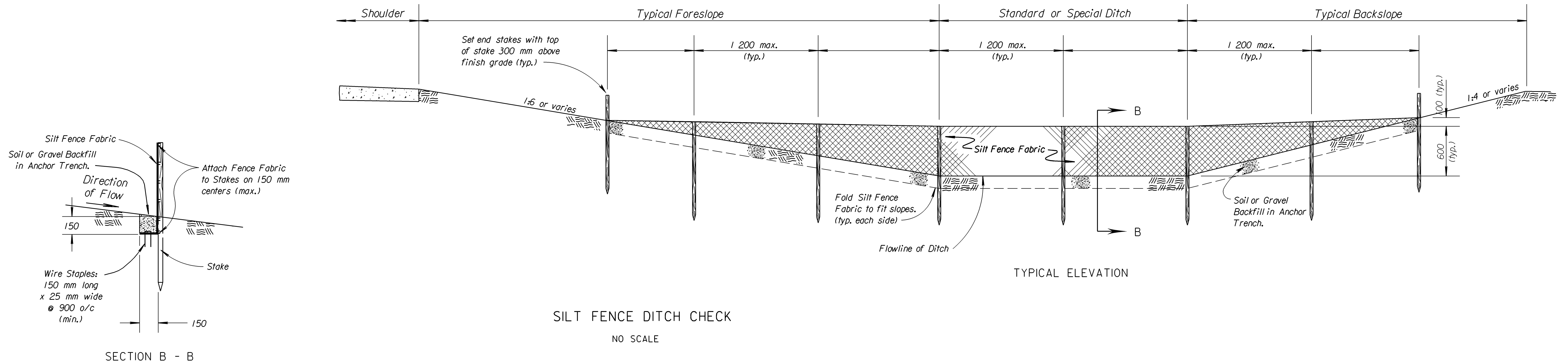


STATE	PROJECT NO.	YEAR	SHEET NO.	TOTAL SHEETS
KANSAS	87 N-0240-01	2004	20	42

SILT FENCE NOTES:

- Stakes shall be 1 200 mm (min.) long and of one of the following materials:
 - Hardwood - 30 mm x 30 mm;
 - Southern Pine (No. 2) - 65 mm x 65 mm;
 - Steel U, T, L, or C Section - 600 grams per 300 mm; or
 - Synthetic - same strength as wood stakes.
- Attach fence fabric to stakes with staples, wire or nails.
- Use as much Silt Fence as necessary to insure water does not flow around end of ditch check.
- Use support fencing when tributary area is greater than 1 hectare or when ditch gradient is greater than 2 percent.



- TRIANGULAR SILT DIKE NOTES**
- Place Triangular Silt Dike sections tightly together, with apron material overlapping end-to-end by 150 mm.
 - Wire Staples shall be 150 mm long by 25 mm wide, minimum.
 - Use as many Triangular Silt Dike sections as necessary to insure water does not flow around end of ditch check.

3					
2					
1					
NO.	DATE	REVISIONS	BY	APP'D	
KANSAS DEPARTMENT OF TRANSPORTATION TEMPORARY EROSION AND POLLUTION CONTROL SILT FENCE DITCH CHECKS TRIANGULAR SILT DIKE DITCH CHECKS LA852F SI					
F.H.W.A. APPROVAL	5/20/99	APP'D	Richard D. Ross		
DESIGNED	WCL	DETAILED	WCL	QUANTITIES	TRACED
DESIGN CK.	RDR	DETAIL CK.	RDR	QUAN. CK.	TRACE CK.

Drawn By: unfiled
 DGN File: \$\$\$\$\$\$DGN\$SPEC\$\$\$\$\$ PLOT 1
 Plotted: 2/5/2004