

PAVING WAWONA IN CONNECTION WITH MAIN 10, FOUR MILE CREEK SEWER PROJECT NO. 472- 83390

CITY OF WICHITA, KANSAS
MICHAEL E. LINDEBAK, CITY ENGINEER
OCA# 624503

GENERAL NOTES

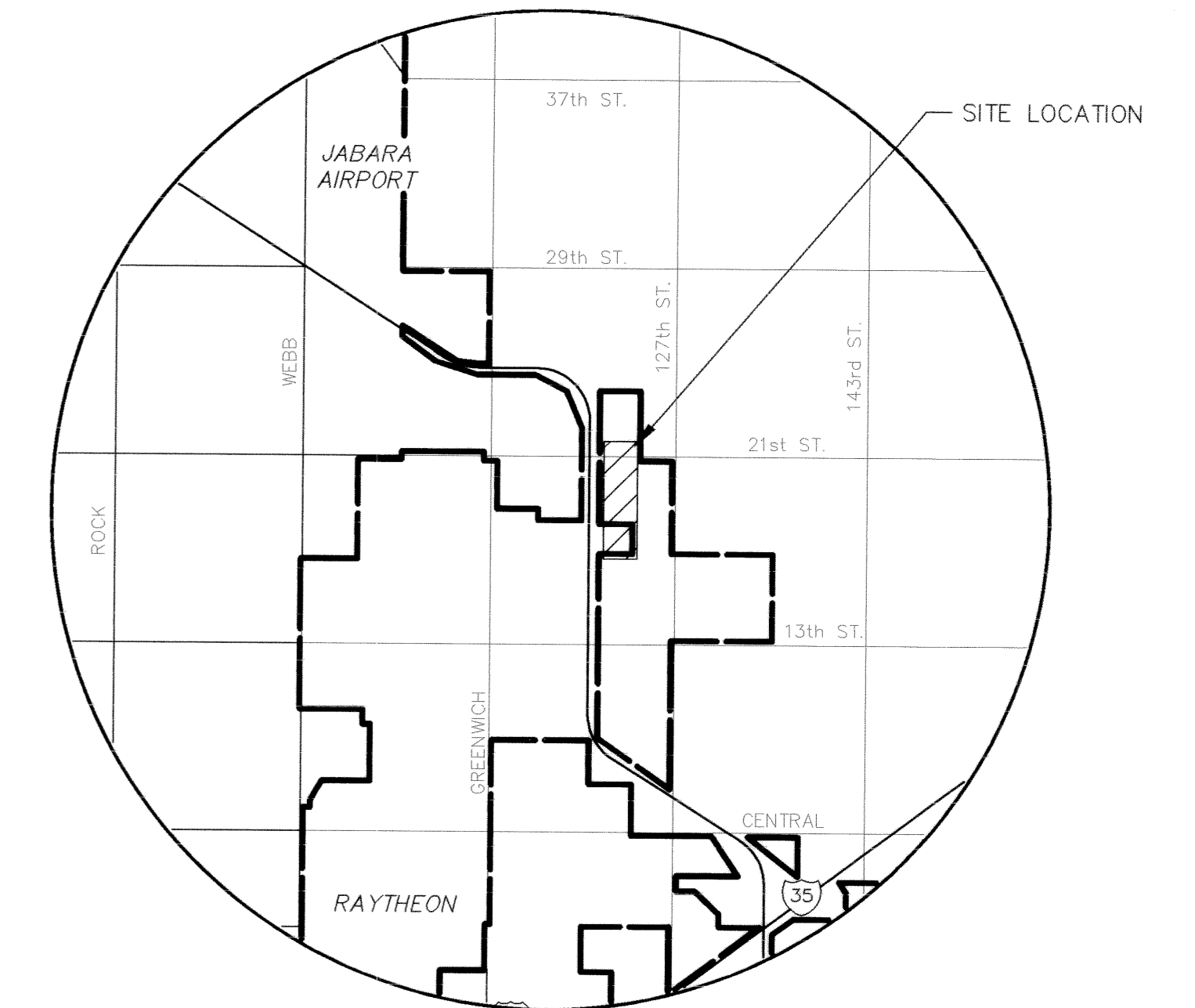
- UNLESS SHOWN OR STATED OTHERWISE ON THESE DRAWINGS, MATERIALS AND CONSTRUCTION SHALL BE IN ACCORDANCE WITH CITY OF WICHITA CONCRETE PAVEMENT AND ASPHALTIC CONCRETE PAVEMENT SPECIFICATIONS.
- THE CONTRACTOR SHALL BE RESPONSIBLE FOR PRESERVING PROPERTY IRONS. THE CONTRACTOR WILL BE REQUIRED TO RE-ESTABLISH ANY PROPERTY IRONS WHICH ARE DAMAGED OR DESTROYED BY HIS CONSTRUCTION OPERATIONS. SUCH IRONS SHALL BE RE-ESTABLISHED BY A LICENSED LAND SURVEYOR IN ACCORDANCE WITH STATE LAWS.
- TRANSITION CURB FROM FULL HEIGHT COMBINATION CURB AND GUTTER TO ROLL TYPE COMBINATION CURB AND GUTTER IS TO BE PAID AS BID FOR LINEAL FEET COMBINED CURB AND GUTTER (3 5/8" ROLL).
- EXISTING UTILITIES AND THEIR LOCATIONS, AS SHOWN ON THE PLANS REPRESENT THE BEST INFORMATION OBTAINABLE FOR DESIGN. LOCATION INFORMATION HAS BEEN OBTAINED FROM THE VARIOUS UTILITY COMPANIES AND IS EITHER FROM COMPANY RECORD DRAWINGS OR COMPANY PROVIDED FIELD LOCATIONS. THE PLAN LOCATIONS SHOWN ARE NOT GUARANTEED. ADDITIONAL EXISTING UTILITIES MAY ALSO BE ENCOUNTERED.
- CONTRACTOR WILL BE REQUIRED TO PROVIDE A MINIMUM ADVANCE NOTICE OF FORTY-EIGHT (48) HOURS TO UTILITY COMPANIES PRIOR TO STARTING ANY EXCAVATION AS FOLLOWS:

KANSAS ONE-CALL 1-800-344-7233
OR 687-2470 (LOCAL WICHITA)

THE CONTRACTOR MUST NOTIFY THE FOLLOWING IN CASE OF AN EMERGENCY:

SOUTHWESTERN BELL TELEPHONE COMPANY 1-800-734-7590
COX CABLEVISION 263-2061
KG&E (GAS & ELECTRIC) 383-8600
CITY OF WICHITA WATER & SEWER MAINT. 262-6000
ARKLA GAS COMPANY 942-8350 OR 263-8161
BUTLER RURAL WATER DIST.#5 778-1631

- RUBBLE FROM THE REMOVAL OF MISCELLANEOUS STRUCTURES AND EXCESS EXCAVATION WHICH IS TO BE WASTED SHALL BE DISPOSED OF ON SITES TO BE PROVIDED BY THE CONTRACTOR. THESE SITES SHALL BE APPROVED BY THE ENGINEER AS TO SUITABILITY, APPEARANCE AND SITE LOCATION. LOCATIONS THAT, IN THE OPINION OF THE ENGINEER, WILL LEAVE AN UNSIGHTLY APPEARANCE WILL NOT BE APPROVED. ALL DISPOSAL SITES MUST BE APPROVED BY THE KANSAS DEPARTMENT OF HEALTH AND ENVIRONMENT. MATERIAL EITHER STOCKPILED OR DISPOSED OF IN A FLOOD PLAIN WOULD REQUIRE A KANSAS STATE BOARD OF AGRICULTURE PERMIT. ANY MATERIAL DUMPED IN WATERS OF THE UNITED STATES OR WETLANDS IS SUBJECT TO U.S. CORPS OF ENGINEERS PERMITTING REGULATIONS. ANY MATERIAL BURIED OR STOCKPILED BEYOND APPROVED CONSTRUCTION LIMITS WOULD REQUIRE ADDITIONAL ARCHAEOLOGICAL INVESTIGATIONS UNLESS BURIED IN A PREVIOUSLY APPROVED BORROW LOCATION.
- CONTRACTOR SHALL RESEED AND MULCH ALL DISTURBED AREAS. COST SHALL BE CONSIDERED SUBSIDIARY TO SITE RESTORATION.



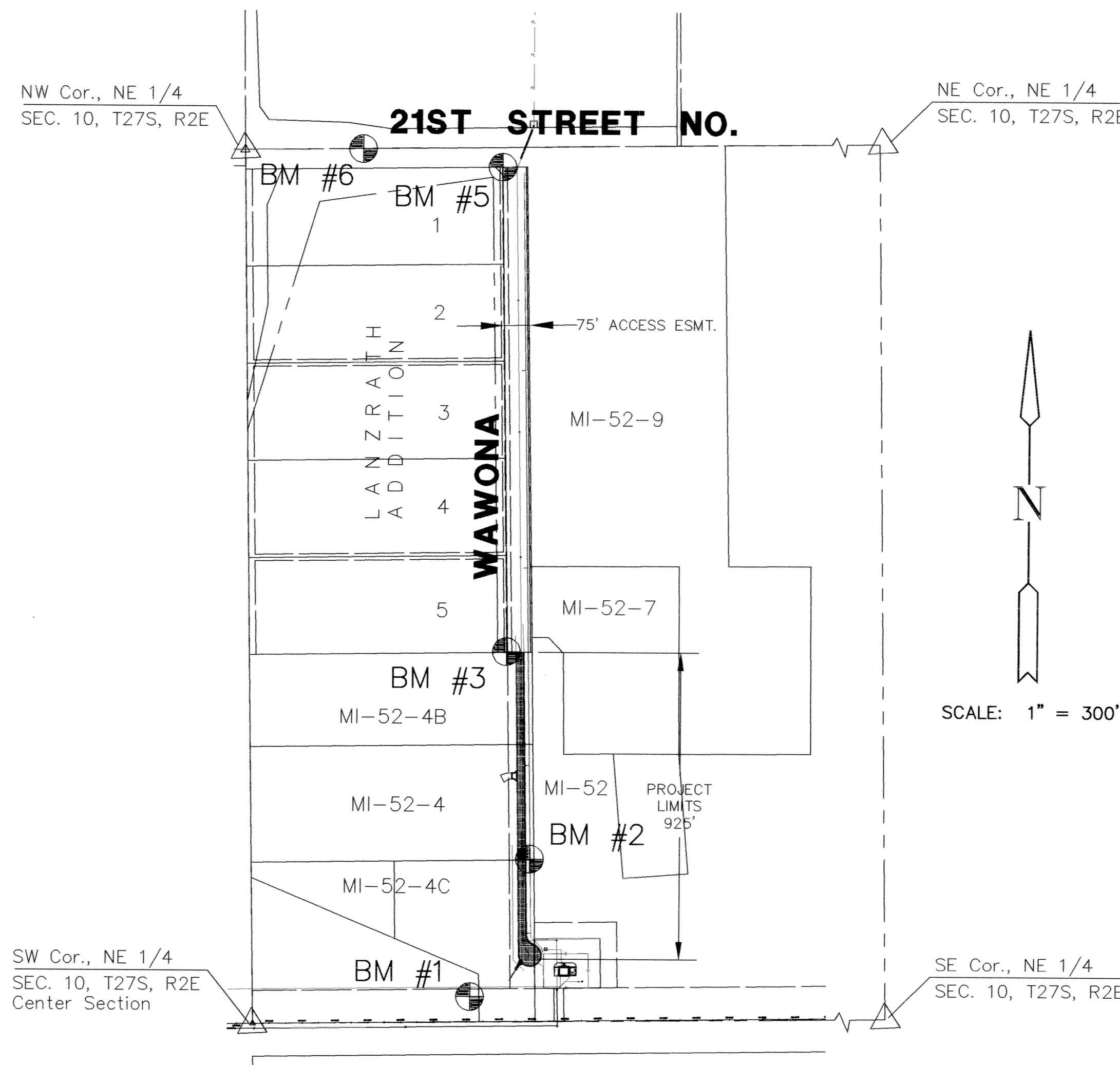
LOCATION MAP

INDEX TO DRAWINGS

SHEET NO.	DESCRIPTION
1	TITLE SHEET
2	TYPICAL SECTION
3	INLET DETAIL
4-5	PLAN SHEETS
6-9	CROSS SECTIONS

BENCHMARKS

- BM #1 RAILROAD SPIKE IN NORTH LEG OF THE 2ND "H" POLW STRUCTURE EAST OF K-96, 1ST "H" POLE WEST OF WAWONA, 660' EAST AND 75' NORTH OF THE CENTER CORNER OF SEC. 10-27S-2E
ELEV. = 167.17
- BM #2 RAILROAD SPIKE IN EAST SIDE OF 18" ELM TREE 2163' SOUTH OF NE 1/4 SEC. 10-27S-2E (21ST ST. N) & 62' EAST OF THE WEST LINE OF WAWONA EXTENDED SOUTH.
ELEV. = 176.30
- BM #3 RAILROAD SPIKE IN WEST SIDE OF POWER POLE ON WEST SIDE OF WAWONA, 1531' SOUTH OF THE NORTH OF THE NE 1/4 SEC. 10-27S-2E
ELEV. = 181.24
- BM #4 RAILROAD SPIKE IN WEST SIDE OF POWER POLE ON THE WEST OF WAWONA, 654' SOUTH OF THE NORTH LINE OF THE NE 1/4 SEC. 10-27S-2E
ELEV. = 189.75
- BM #5 STEPPED SPIKE IN NORTH SIDE OF POWER POLE ON SW COR. 21ST. & WAWONA, 779' EAST & 48' SOUTH OF NORTH 1/4 COR. SEC. 10-27S-2E
ELEV. = 197.32
- BM #6 CHISELED "I" ON THE TC ON EAST END OF MEDIAN ISLAND, 360' EAST OF NORTH 1/4 COR. SEC. 10-27S-2E
ELEV. = 189.42

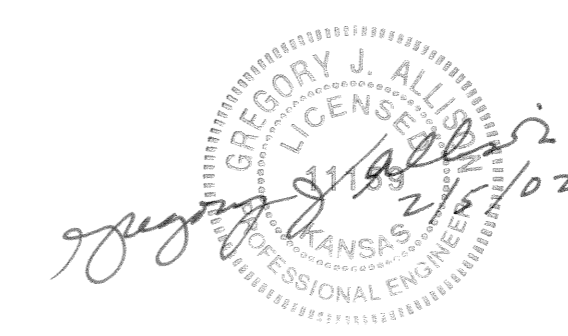


LENGTH OF PROJECT

25' BK-BK 925.4 FT.

EARTHWORK SUMMARY

EXCAVATION 1744.2 C.Y.
COMPACTED FILL 0 C.Y.
LOOSE FILL 94.7 C.Y.



H:\ENR\97168\DWG\PAVE\97168ET



ENGINEERING CONSULTANTS
411 N. WEBB ROAD
WICHITA, KS. 67206
316-684-9600

NORTHEAST PUMP STATION
PROJECT NAME

PAVING PLANS
SHEET TITLE

GJA DESIGN BY: BDM/RKH DRAWN BY: GJA CHECKED BY:
APRIL 2001 DATE: 97168ET JOB NO. 1 / 9 SHEET OF