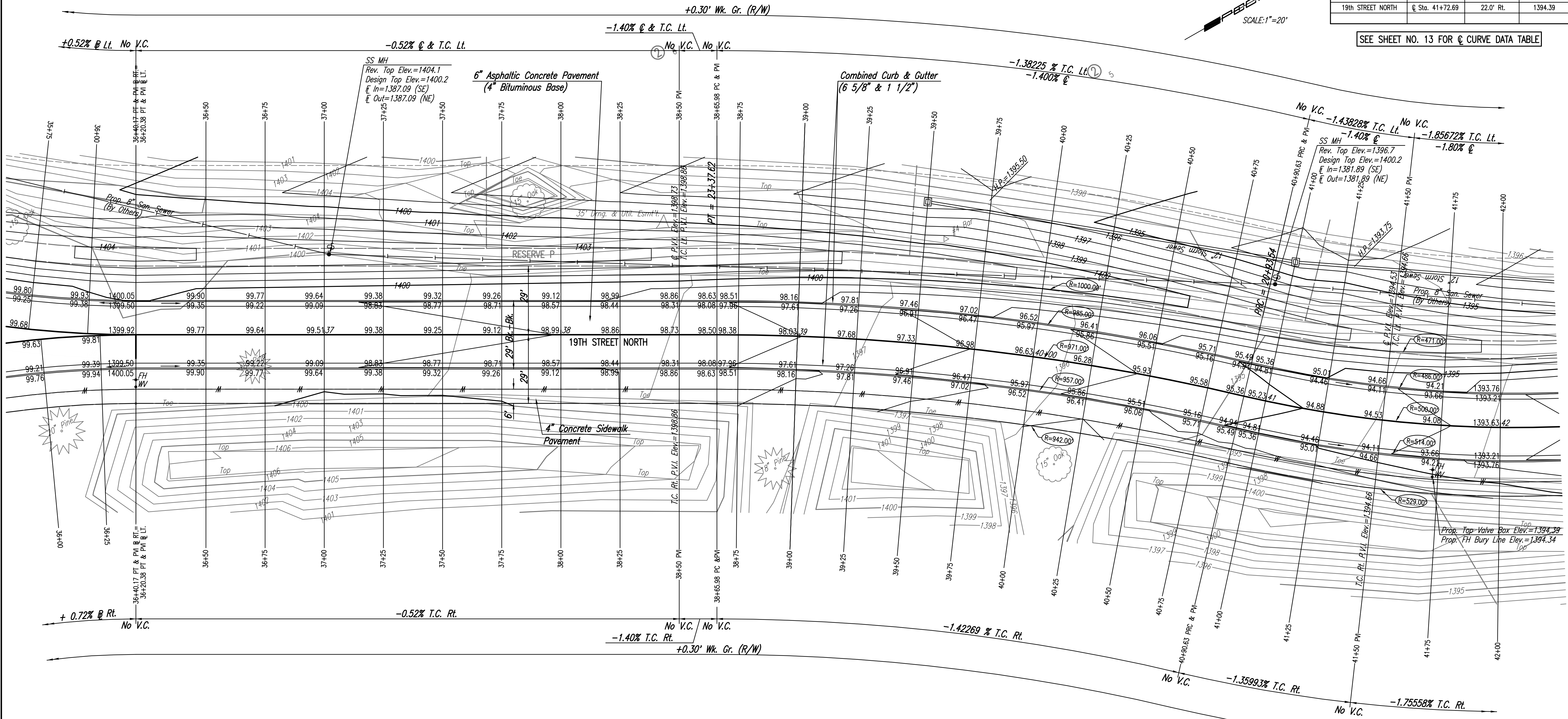
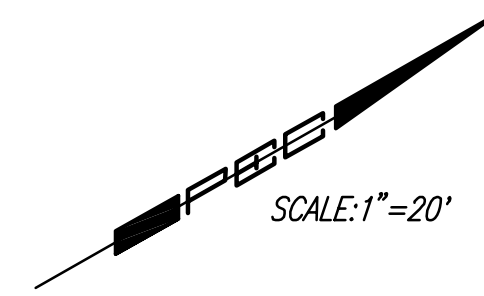


WATER VALVE BOX ELEVATIONS			
STREET	STATION	OFFSET	PROPOSED ELEVATION
19th STREET NORTH	Sta. 41+72.69	22.0' RT.	1394.39

SEE SHEET NO. 13 FOR C CURVE DATA TABLE



C CURVE DATA

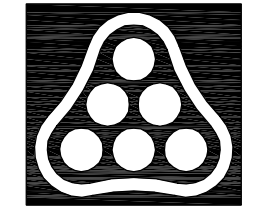
A=13°15'21\"/>

CURVE DATA BASED ON C radius Δ/2= 6° 37' 40.5\"/>

C STATION	C ARC LENGTH	FACE CURB LENGTH		CHORD LENGTH		DEFLECTION ANGLE	C TOTAL DEFLECTION
		LEFT CURB	RIGHT CURB	8' OFF LEFT FACE CURB	8' OFF RIGHT FACE CURB		
38+65.98						0°00'00.0"	0°00'00.0"
38+75.00	9.02'	9.15'	8.89'	9.22'	8.82'	00°15'58.0"	00°15'58.0"
39+00.00	25.00'	25.36'	24.64'	25.57'	24.43'	00°44'15.3"	01°00'13.4"
39+25.00	25.00'	25.36'	24.64'	25.57'	24.43'	00°44'15.3"	01°44'28.7"
39+50.00	25.00'	25.36'	24.64'	25.57'	24.43'	00°44'15.3"	02°28'44.0"
39+75.00	25.00'	25.36'	24.64'	25.57'	24.43'	00°44'15.3"	03°12'59.3"
40+00.00	25.00'	25.36'	24.64'	25.57'	24.43'	00°44'15.3"	03°57'14.6"
40+25.00	25.00'	25.36'	24.64'	25.57'	24.43'	00°44'15.3"	04°41'29.9"
40+50.00	25.00'	25.36'	24.64'	25.57'	24.43'	00°44'15.3"	05°25'45.3"
40+75.00	25.00'	25.36'	24.64'	25.57'	24.43'	00°44'15.3"	06°10'6"
40+90.63	15.63'	15.85'	15.40'	15.98'	15.27'	00°27'40.1"	06°37'40.5"
TOTAL	224.65'	227.89'	221.41'				

Defl./ft. = 1.770209 min.

Scaled 11-06-2006 2:37:54 PM by BJS
 Plot Scale 1:20 11-07-2006 12:06:48 PM by REJ
 J:\SENTOUT\2005\05731\003\206-11-07 to CIV DWG\11-19TH ST NORTH-STR36-42



No.	Revision	By	Date
OAK CREEK 2ND - PHASE 2 19TH STREET NORTH STA. 36+00 TO STA. 42+00 JAMES L. ARMOUR, P.E. - CITY ENGINEER CITY OF WICHITA PROJECT NO. 472-84449			
Professional Engineering Consultants, P.A. 303 S. TOPKA • WICHITA, KANSAS 67202 316-262-2691 • FAX 316-262-3003			
Designed by	BDB, BMM	Job No.	35-05731-003
Drawn by	BJS, TAT	Date	February 2006
			Sheet 11 of 84