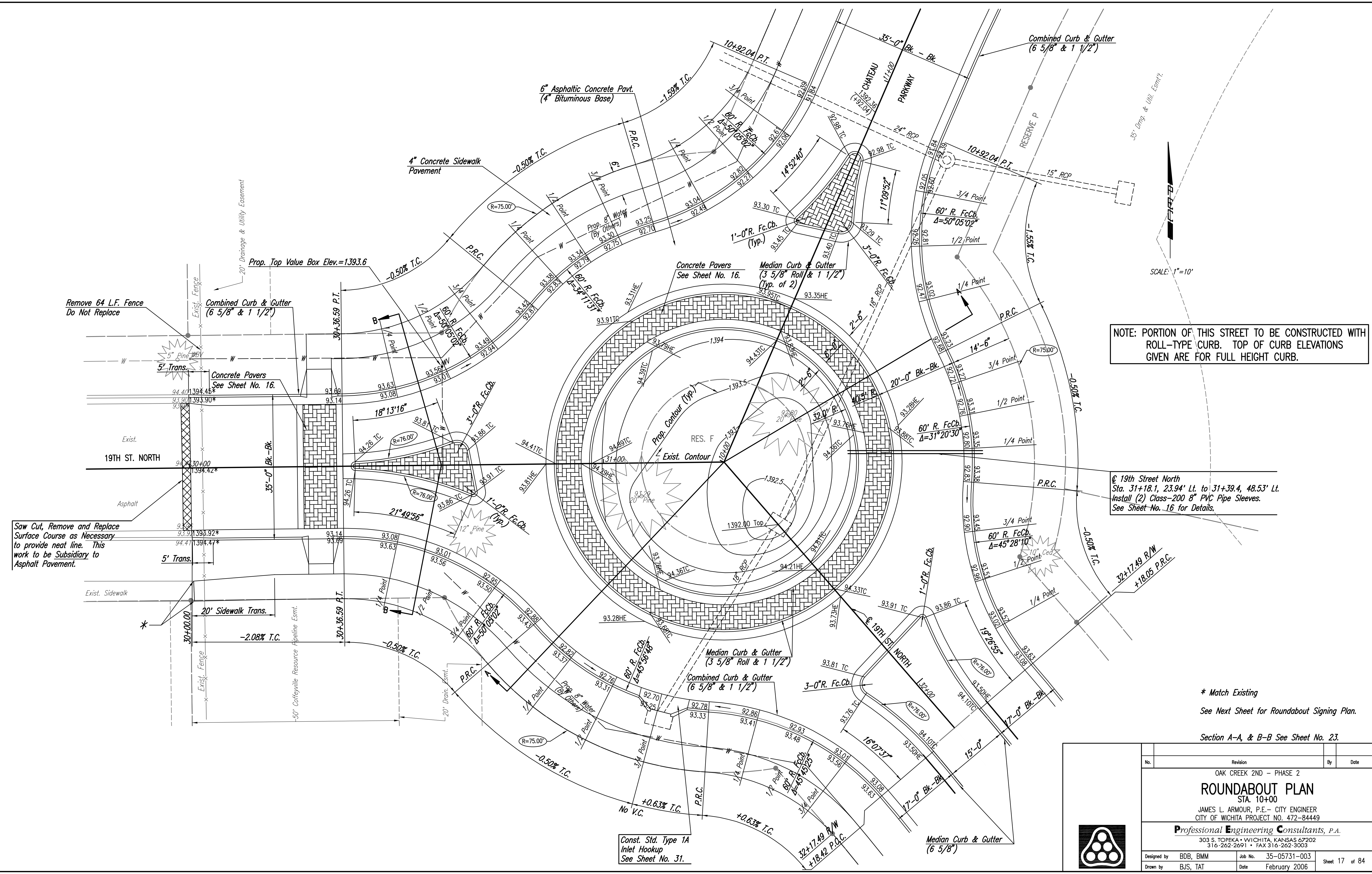


Served 11-07-2006 7:41:54 AM by BJS  
 Plot Scale 1:10 11-07-2006 12:03:51 PM by BEJ  
 J:\SENTOUT\2005\05231\03\2006-11-07 to City DMV\7-ROUNDABOUT.PLAN.1

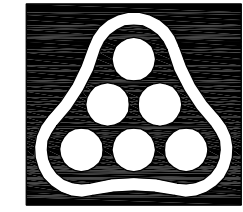


NOTE: PORTION OF THIS STREET TO BE CONSTRUCTED WITH  
 ROLL-TYPE CURB. TOP OF CURB ELEVATIONS  
 GIVEN ARE FOR FULL HEIGHT CURB.

@ 19th Street North  
 Sta. 31+18.1, 23.94' Lt. to 31+39.4, 48.53' Lt.  
 Install (2) Class-200 8" PVC Pipe Sleeves.  
 See Sheet No. 16 for Details.

\* Match Existing  
 See Next Sheet for Roundabout Signing Plan.  
 Section A-A, & B-B See Sheet No. 23.

No.	Revision	By	Date
	OAK CREEK 2ND - PHASE 2		
<b>ROUNDABOUT PLAN</b>			
STA. 10+00			
JAMES L. ARMOUR, P.E. - CITY ENGINEER			
CITY OF WICHITA PROJECT NO. 472-8449			
<b>Professional Engineering Consultants, P.A.</b>			
303 S. TOPKA • WICHITA, KANSAS 67202			
316-262-2691 • FAX 316-262-3003			
Designed by	BDB, BMM	Job No.	35-05731-003
Drawn by	BJS, TAT	Date	February 2006
			Sheet 17 of 84



Const. Std. Type 1A  
 Inlet Hookup  
 See Sheet No. 31.