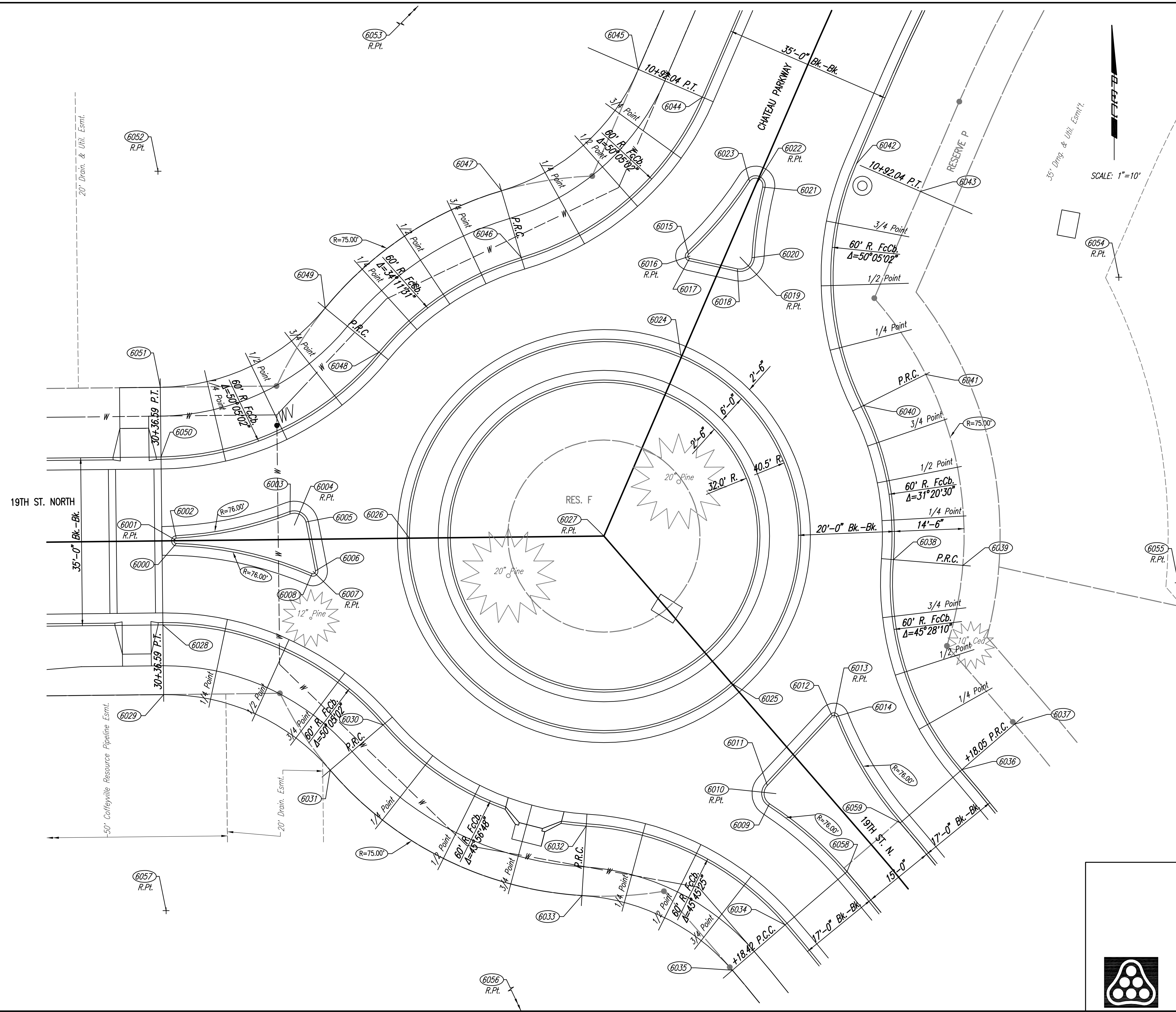


Saved: 11-07-2006 5:30:26 AM by BJS
 Plot Scale: 1:10 11-07-2006 12:02:59 PM by BEJ
 J:\SENTOUT\2005\05731\003\2006-11-07 to City DWG\19-ROUNDAABOUT_COORDINATE.1



COORDINATE LIST		
POINT	NORTH	EAST
6000	385,767.0112	2,371,490.2317
6001	385,767.6279	2,371,490.2444
6002	385,768.1273	2,371,490.2194
6003	385,773.1530	2,371,513.9184
6004	385,770.8204	2,371,514.8177
6005	385,771.4734	2,371,517.2378
6006	385,761.2841	2,371,519.2064
6007	385,761.1893	2,371,518.7154
6008	385,760.7305	2,371,518.5166
6009	385,712.8308	2,371,613.7547
6010	385,714.9242	2,371,615.1213
6011	385,716.6308	2,371,613.2944
6012	385,731.0993	2,371,626.8096
6013	385,730.7579	2,371,627.1750
6014	385,730.9401	2,371,627.6406
6015	385,827.2305	2,371,596.8780
6016	385,826.8621	2,371,597.2160
6017	385,826.3736	2,371,597.1095
6018	385,824.2006	2,371,607.0715
6019	385,826.6432	2,371,607.6043
6020	385,826.5104	2,371,610.1008
6021	385,841.2247	2,371,612.3335
6022	385,841.5930	2,371,610.8794
6023	385,842.4007	2,371,609.6155
6024	385,805.7182	2,371,595.3589
6025	385,737.9450	2,371,605.8055
6026	385,768.1028	2,371,538.7801
6027	385,768.5477	2,371,579.2777
6028	385,750.0376	2,371,487.4375
6029	385,735.5385	2,371,487.5968
6030	385,729.2194	2,371,533.3045
6031	385,719.7936	2,371,522.2861
6032	385,708.1611	2,371,575.5763
6033	385,693.6882	2,371,574.6892
6034	385,687.6004	2,371,617.0210
6035	385,678.1382	2,371,606.0339
6036	385,719.9240	2,371,653.8539
6037	385,729.4000	2,371,664.8251
6038	385,763.6403	2,371,639.5783
6039	385,762.4639	2,371,654.0305
6040	385,795.7211	2,371,633.3319
6041	385,802.2337	2,371,646.2871
6042	385,846.0707	2,371,631.8842
6043	385,840.3132	2,371,645.1921
6044	385,859.9680	2,371,599.7615
6045	385,865.7255	2,371,586.4536
6046	385,826.5499	2,371,562.0732
6047	385,840.4513	2,371,557.9498
6048	385,806.8564	2,371,532.4515
6049	385,816.0378	2,371,521.2286
6050	385,785.0355	2,371,487.0529
6051	385,799.5346	2,371,486.8938
6052	385,844.5319	2,371,486.3992
6053	385,883.5934	2,371,545.1530
6054	385,822.4453	2,371,686.4927
6055	385,758.8139	2,371,698.8823
6056	385,648.7725	2,371,571.9361
6057	385,690.5412	2,371,488.0912
6058	385,698.6941	2,371,629.9024
6059	385,708.8099	2,371,640.9861

6000 = COORDINATE POINT NO.
 SEE SHEET NOS. 3 & 4 FOR PLAT COORDINATES

No.	Revision	By	Date
OAK CREEK 2ND - PHASE 2			
ROUNDAABOUT COORDINATE PLAN			
STA. 10+00			
JAMES L. ARMOUR, P.E. - CITY ENGINEER			
CITY OF WICHITA PROJECT NO. 472-84449			
Professional Engineering Consultants, P.A.			
303 S. TOPKA • WICHITA, KANSAS 67202			
316-262-2691 • FAX 316-262-3003			
Designed by	BDB, BMM	Job No.	35-05731-003
Drawn by	BJS, TAT	Date	February 2006
			Sheet 19 of 84

