

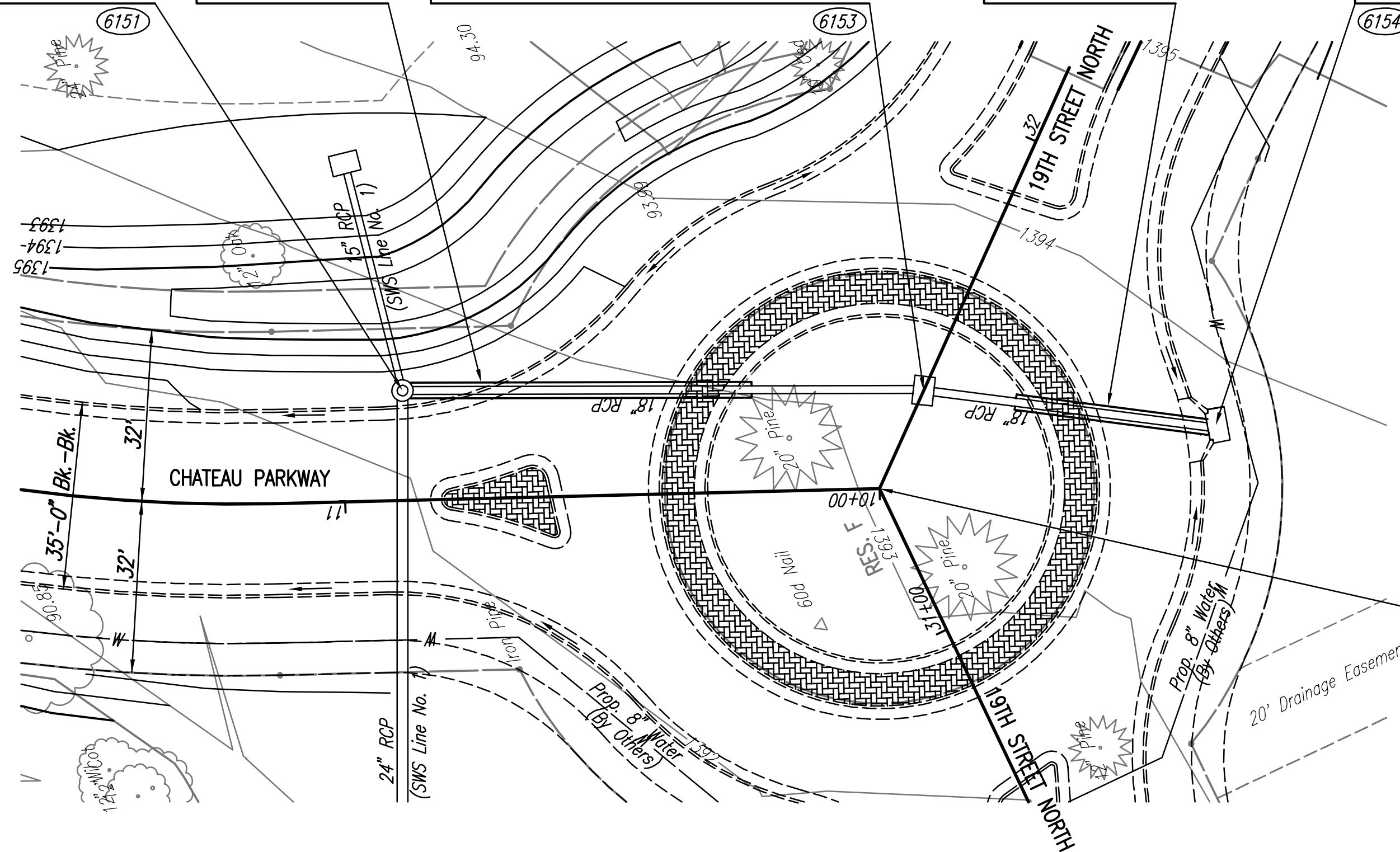
Sta. 15+00.0 SWS Line No. 1A=
 Sta. 10+00.0 SWS Line No. 1=
 @ Chateau Parkway Sta. 10+88.85, 20.43' Lt.
 Reinforced Conc. Manhole
 Dia=4'-0"
 Top Elev.=1392.48
 See Sheet No. 26.

Install 63 L.F.
 Excavatable Flowable
 Fill to Elev. 1391.0

Sta. 15+97.0 SWS Line No. 1A=
 @ 19th Street North Sta. 31+49.09, 00.00' Rt.
 Const. Std. Area Inlet
 L=5'-4", W=3'-10"
 Top Elev.=1392.00
 Install 54.7 L.F. 18" RCP (SW)
 See Sheet No. 32.

Install 36 L.F.
 Excavatable Flowable
 Fill to Elev. 1391.5

Sta. 16+51.7 SWS Line No. 1A=
 @ 19th Street North Sta. 31+65.52, 52.22' Rt.
 Const. Std. Type 1A Curb Inlet
 L=5'-0", W=3'-0"
 Top Elev.=1393.25
 See Sheet No. 31.



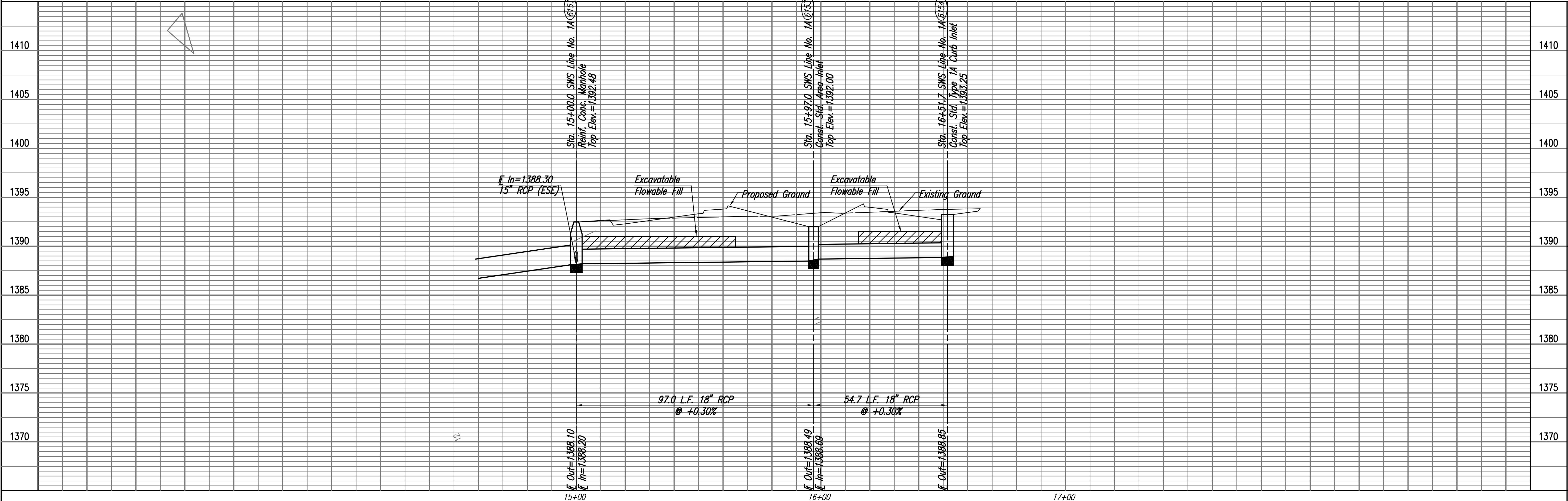
COORDINATE LIST		
POINT	NORTH	EAST
6151	385,841.4899	2,371,633.0936
6153	385,753.4353	2,371,592.3778
6154	385,706.8170	2,371,563.6833

6151 = COORDINATE POINT NO.
 SEE SHEET NOS. 3 & 4 FOR PLAT COORDINATES

Sta. 10+00.00 @ Chateau Parkway=
 Sta. 31+29.09 @ 19th Street North

PLAN	CHECKED	DATE
	CHECKED	

PROFILE	CHECKED	DATE
	CHECKED	



Printed 11-06-2006 5:15:54 PM by BJS
 Plot Scale 1:20 11-07-2006 12:20:39 PM by BEJ
 J:\SENTOU\2005\02731\003\2006-11-07 to CIV\DWG\27-SWS LINE NO 1A

OKA CREEK 2ND - PHASE 2

SWS LINE NO. 1A

JAMES L. ARMOUR, P.E.-CITY ENGINEER
 CITY OF WICHITA PROJECT NO. 472-84449

Professional Engineering Consultants, P.A.
 303 S. TORREY WICHITA, KANSAS 67202
 316-262-2291 • FAX 316-262-3063

Designed By: BDB, BMM
 Drawn By: BJS, JMU

Job No. 35-04688-000
 Date October 2004

Sheet 27 of 84