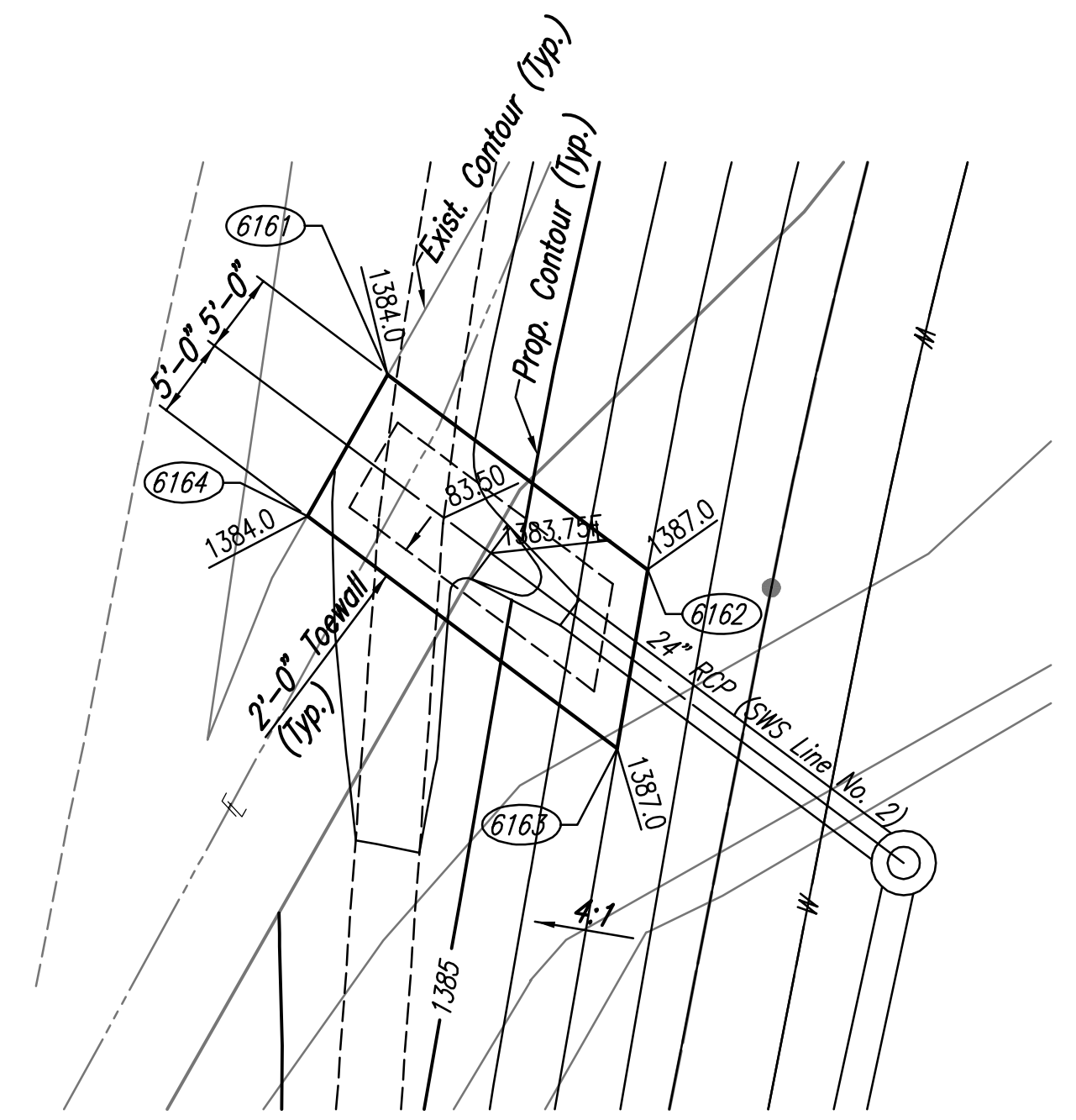


SCALE: 1"=10'

COORDINATE LIST		
POINT	NORTH	EAST
6166	385,885.3609	2,371,550.1287
6167	385,877.4799	2,371,543.3459

6166 = COORDINATE POINT NO.

RIPRAP PLAN
(SWS Line No. 1)

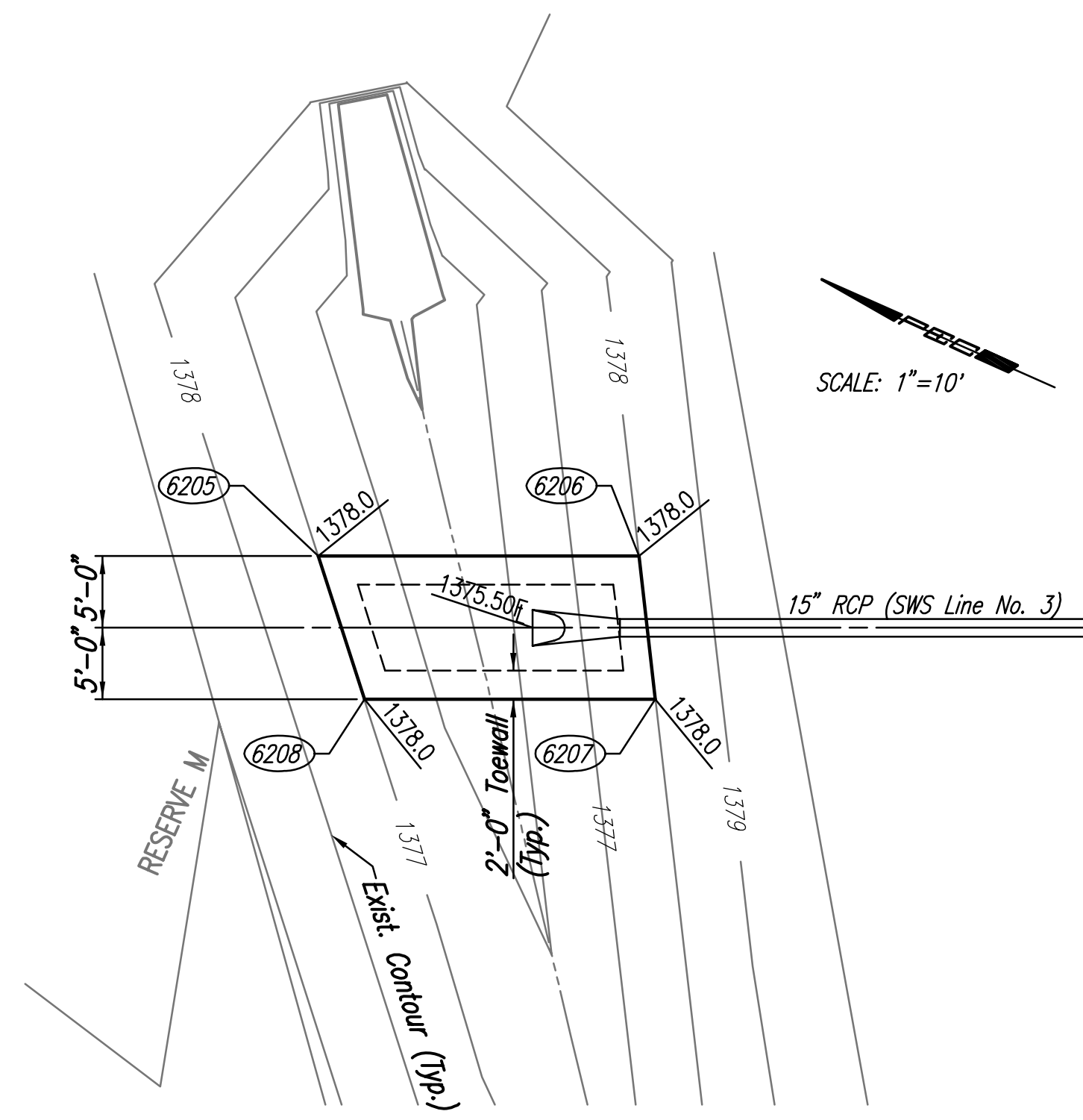


SCALE: 1"=10'

COORDINATE LIST		
POINT	NORTH	EAST
6161	386,153.7266	2,371,706.1117
6162	386,141.6247	2,371,722.2399
6163	386,130.5533	2,371,720.3332
6164	386,144.9695	2,371,701.1207

6161 = COORDINATE POINT NO.

RIPRAP PLAN
(SWS Line No. 2)

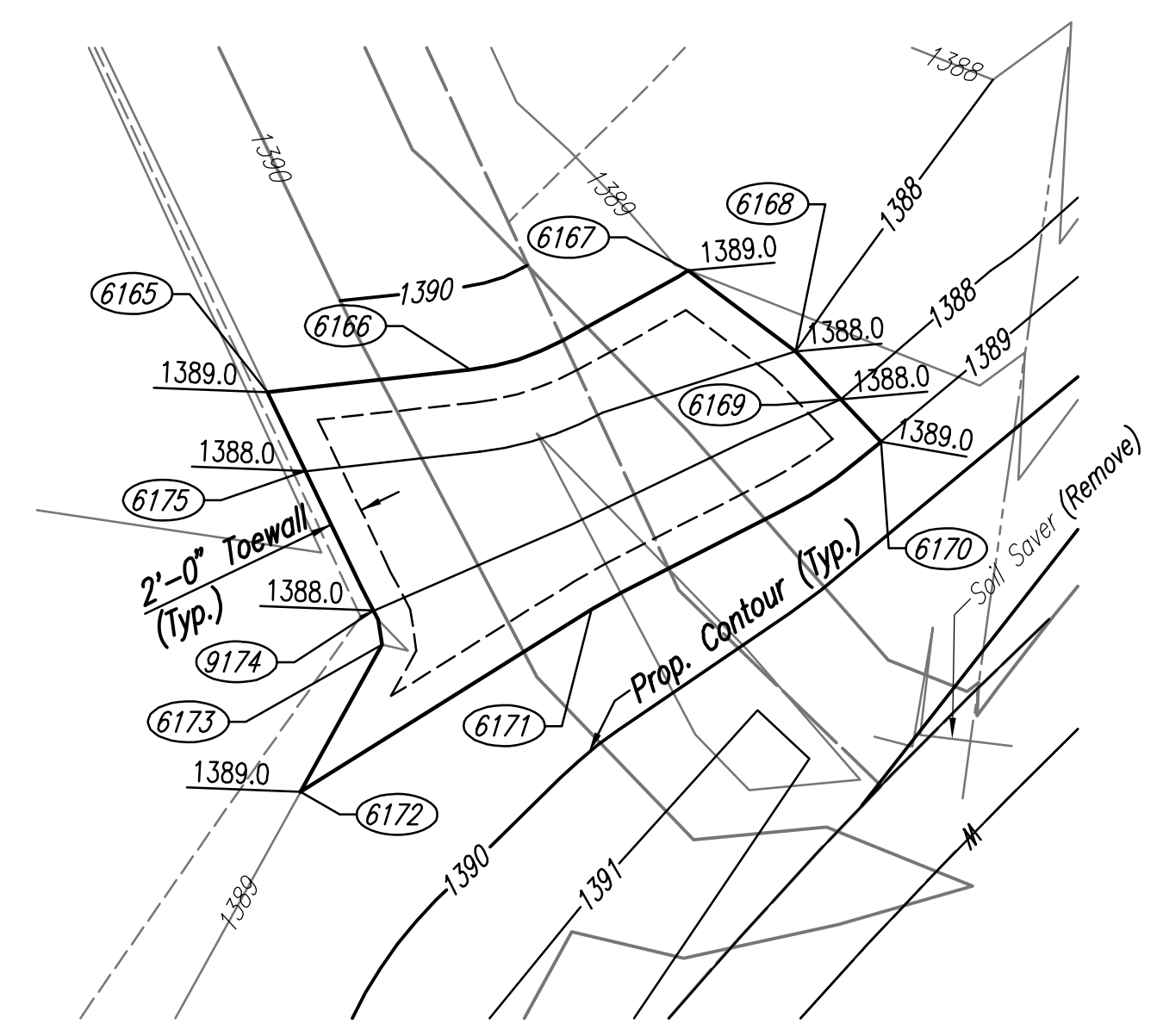


SCALE: 1"=10'

COORDINATE LIST		
POINT	NORTH	EAST
6205	386,543.6350	2,372,067.5070
6206	386,523.1777	2,372,076.5928
6207	386,518.0645	2,372,067.9218
6208	386,536.6401	2,372,059.6718

6205 = COORDINATE POINT NO.

RIPRAP PLAN
(SWS Line No. 3)

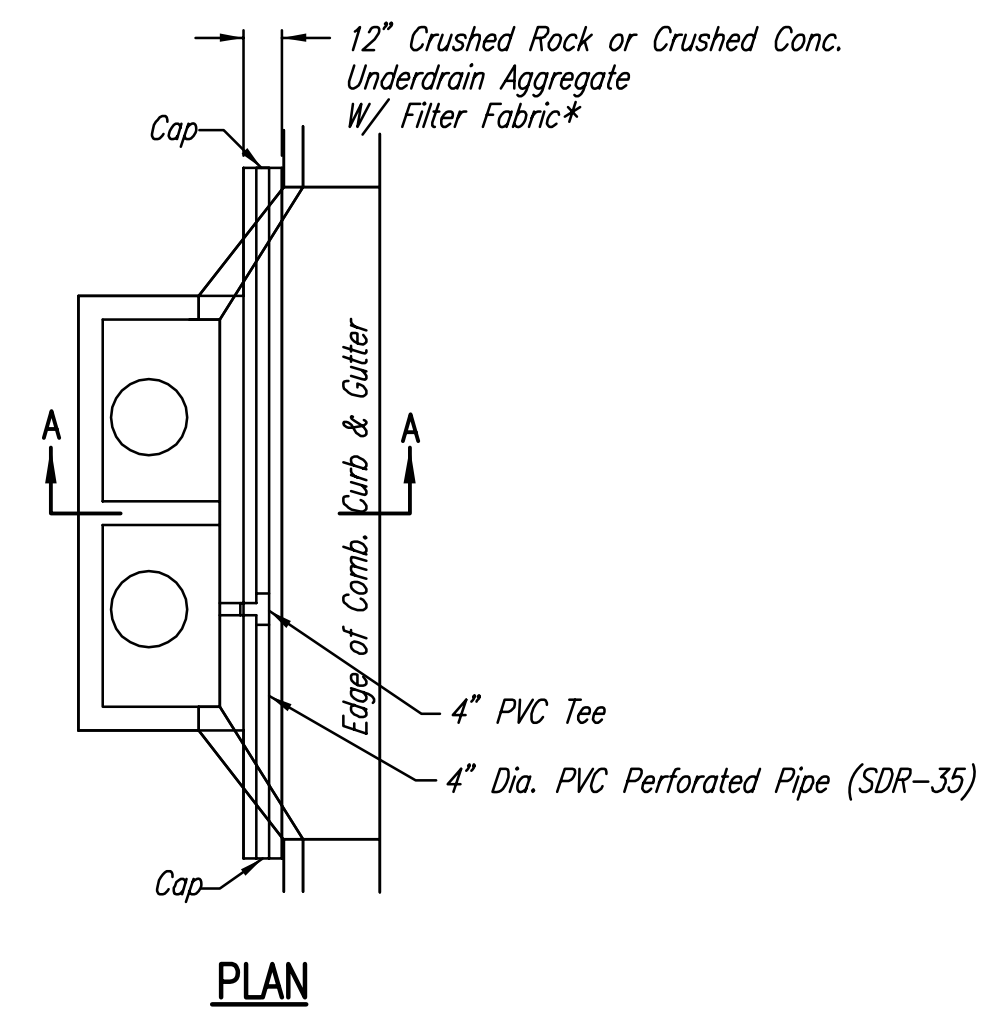


SCALE: 1"=10'

COORDINATE LIST		
POINT	NORTH	EAST
6165	386,007.3039	2,371,623.6034
6166	386,008.6656	2,371,635.8571
6167	386,014.6805	2,371,649.0309
6168	386,009.7682	2,371,655.5069
6169	386,006.8651	2,371,658.2587
6170	386,004.3069	2,371,660.6836
6171	385,994.1548	2,371,643.1924
6172	385,983.1237	2,371,625.5716
6173	385,992.0499	2,371,630.5071
6174	385,994.0878	2,371,630.0114
6175	386,002.5277	2,371,625.8949

6165 = COORDINATE POINT NO.

RIPRAP PLAN
(Channel-Chateau Parkway)

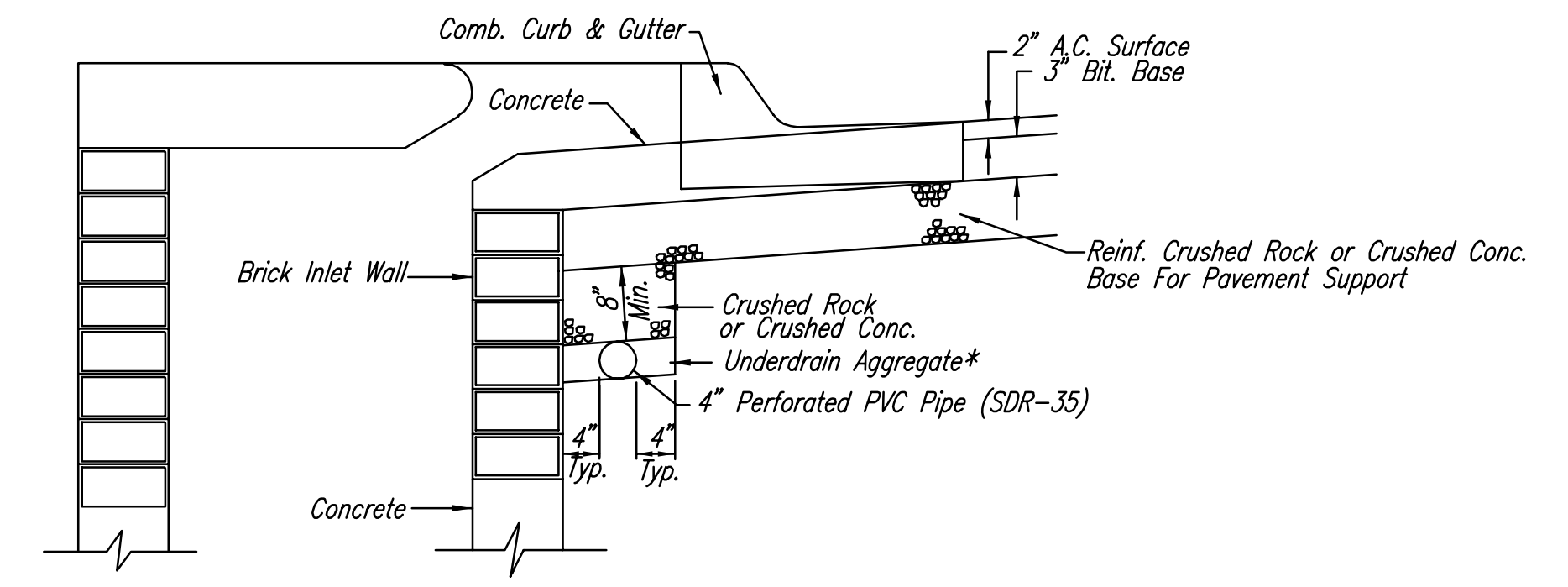


* UNDERDRAIN AGGREGATE PERCENT OF AGGREGATE RETAINED

1"	0
3/4"	0-10
3/8"	45-80
#4	90-100
#8	95-100

ROCK QUALITY SHALL CONFORM TO THE REQUIREMENTS SPECIFIED BY THE KDOT 1990 EDITION STANDARD SPECIFICATION SUBSECTION 1102 FOR DURABILITY CLASS I.

PAVEMENT UNDERDRAIN LOCATIONS		
STREET	STATION	SIDE
CHATEAU PARKWAY	± 13+30.00	RT.
CHATEAU PARKWAY	± 2 13+30.00	LT.
CHATEAU PARKWAY	± 19+00.23	RT.
19TH STREET NORTH	± 31+65.52	52.22' RT.

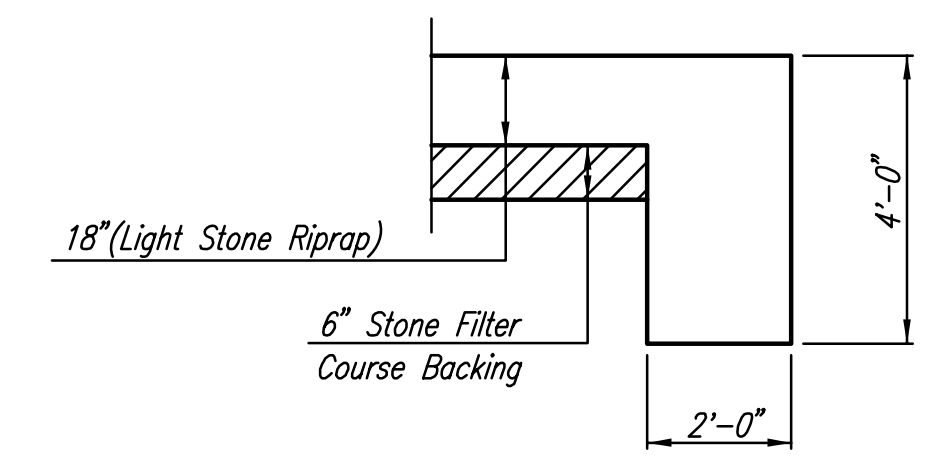


Min. 16 Perforations Per Lin. Ft. @ 1/4" Dia.
Perforations to Be on Bottom Half

SECTION A-A

PAVEMENT UNDERDRAIN DETAIL

NOTE: PLACE 4" PVC PERFORATED PIPE AT ALL DRAINAGE SUMP LOCATIONS.
COST OF UNDERDRAIN SYSTEM TO BE INCIDENTAL TO THE REINFORCED CRUSHED ROCK OR REINFORCED CRUSHED CONCRETE BASE.
INLET TYPE MAY VARY FROM THAT SHOWN.

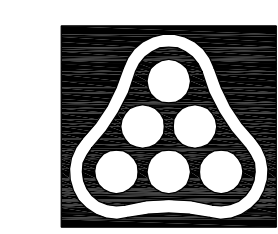


TYPICAL SECTION THRU TOEWALL
NO SCALE

NOTES

- ALL RIPRAP FOR THIS PROJECT SHALL BE NATURAL STONE. NEITHER BROKEN CONCRETE, FABRIC ENVELOPE, NOR PREMIXED DRY PACKAGED CONCRETE BAG ALTERNATES WILL BE ALLOWED.
- TOEWALLS SHALL BE INSTALLED ALONG ALL EDGES OF STONE RIPRAP OR AS SHOWN ON PLANS.
- GROUTING OF THE SURFACE OF THE RIPRAP SHALL NOT BE PERFORMED. GROUTING OF THE TOEWALLS SHALL BE PERFORMED PER CITY SPECIFICATIONS.

Saved: 11-07-2006 6:18:08 AM by BJS
 Plot Scale: 1:10 11-07-2006 12:16:00 PM by BJS
 J:\SENTOUT\2005\05231\03\2006-11-07 to City\DWG\35-MISC DRAIN DTL5



No.	Revision	By	Date
OAK CREEK 2ND - PHASE 2			
MISCELLANEOUS DRAINAGE DETAILS			
JAMES L. ARMOUR, P.E. - CITY ENGINEER CITY OF WICHITA PROJECT NO. 472-84449 Professional Engineering Consultants, P.A. 303 S. TOPKA • WICHITA, KANSAS 67202 316-262-2691 • FAX 316-262-3003			
Designed by	BDB, BMM	Job No.	35-05731-003
Drawn by	BJS, TAT	Date	February 2006
			Sheet 36 of 84