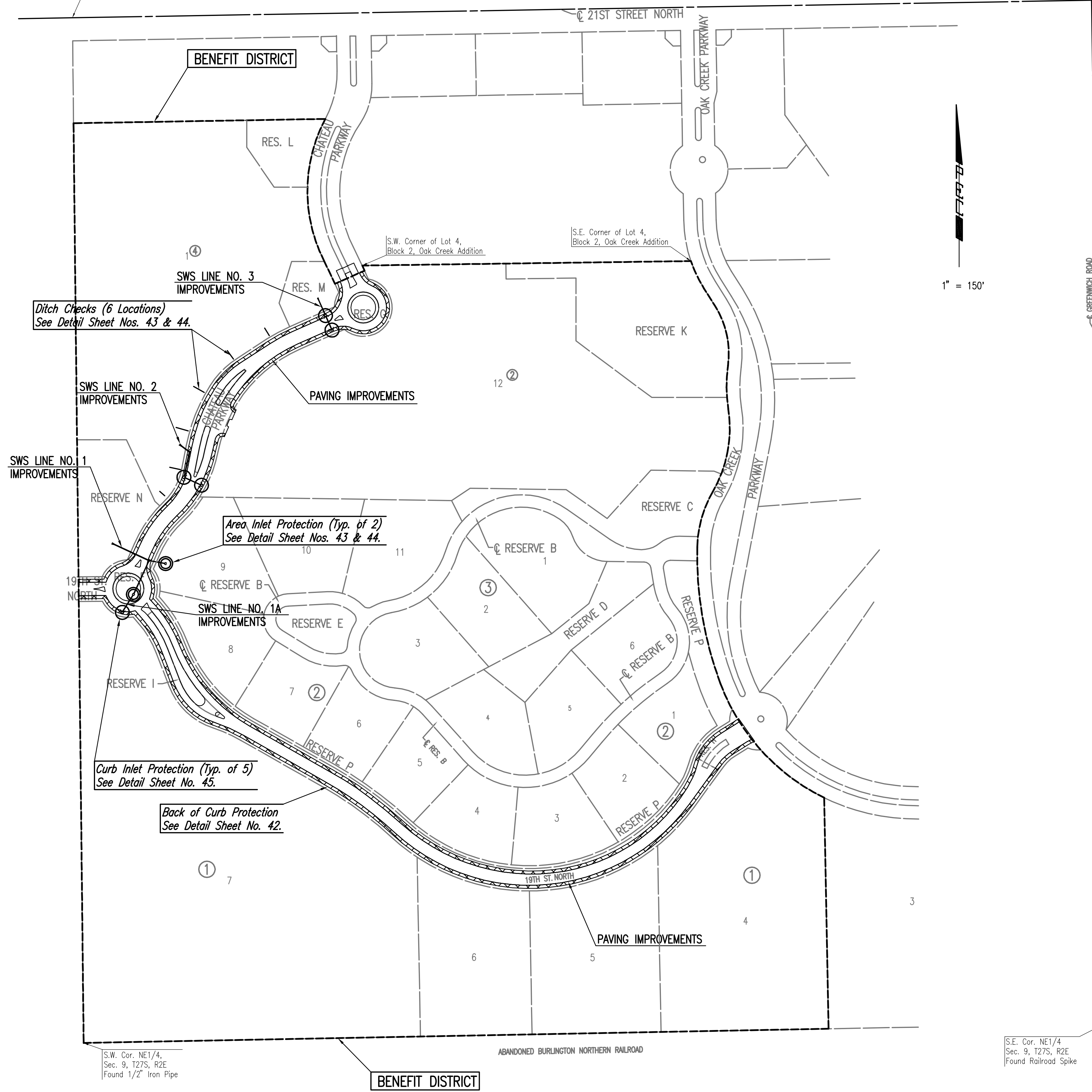


# OAK CREEK 2ND

AN ADDITION TO WICHITA, SEDGWICK COUNTY, KANSAS

N.W. Cor. NE1/4  
Sec. 9, T27S, R2E  
Found #5 Bar w/ MKEC Cap

N.E. Cor. Sec. 9  
T27S, R2E  
Found Chiseled "+"  
In Concrete



### GENERAL NOTES

THE EROSION CONTROL DEVICES SHOWN ON THIS SHEET ARE CONSIDERED MINIMUM STANDARDS. WHENEVER SEDIMENT ENTERS THE STREETS, STORM SEWERS, DITCHES, OR PONDS, CONTRACTOR WILL INSTALL ADDITIONAL DEVICES, AS NEEDED, TO CORRECT THE PROBLEM.

THE EROSION CONTROL DEVICES SHOWN HEREON MUST BE IN PLACE AT ALL TIMES DURING CONSTRUCTION UNTIL SUCH TIME AS THE SITE IS REESTABLISHED WITH PAVING OR GRASS. TEMPORARY OR PERMANENT SEEDING AND MULCH WILL BE INSTALLED WHEN EARTHWORK ACTIVITIES CEASE IN AN AREA FOR 14 DAYS OR MORE.

BACK OF CURB PROTECTION: AS SHOWN ON CITY STANDARD DETAILS. THESE DEVICES MUST REMAIN IN PLACE UNTIL THE AREA BETWEEN THE CURB AND RIGHT-OF-WAY LINE HAS BEEN PERMANENTLY STABILIZED.

ANY MUD INADVERTENTLY TRACKED ONTO ANY STREET WILL BE CLEANED UP BY THE CONTRACTOR, AT THE END OF EACH DAY'S WORK.

CONTRACTOR TO FURNISH A TRUCK WASH-OUT PIT TO BE PLACED AT A CONVENIENT LOCATION THAT DOES NOT CONFLICT WITH CONSTRUCTION. CONTRACTOR SHALL CLEAN OUT AND BACKFILL PIT PRIOR TO FINAL INSPECTION.

### LEGEND

- Ditch Checks
- Area Inlet Protection
- Curb Inlet Protection
- Back of Curb Protection

**NOTE:**  
CONTRACTOR SHALL NOT REMOVE ANY TREES FROM THE PROJECT SITE WITHOUT SPECIFIC APPROVAL OF THE OWNER AND/OR ENGINEER.

Sowed 11-07-2006 6:24:10 AM by BJS  
Plot Scale 1:150 11-07-2006 12:25:00 PM by BEJ  
JA\SENTOU\2005\09731\003\2006-11-07 to City DWG\41-EROSION CONTROL

S.W. Cor. NE1/4,  
Sec. 9, T27S, R2E  
Found 1/2" Iron Pipe

S.E. Cor. NE1/4  
Sec. 9, T27S, R2E  
Found Railroad Spike

	Revision		By	Date
OAK CREEK 2ND - PHASE 2				
<b>EROSION CONTROL PLAN</b>				
JAMES L. ARMOUR, P.E. - CITY ENGINEER CITY OF WICHITA PROJECT NO. 472-84449				
<b>Professional Engineering Consultants, P.A.</b>				
303 S. TOPKA • WICHITA, KANSAS 67202 316-262-2691 • FAX 316-262-3003				
Designed by	BDB, BMM	Job No.	35-05731-003	
Drawn by	BJS, TAT	Date	February 2006	
				Sheet 41 of 84

