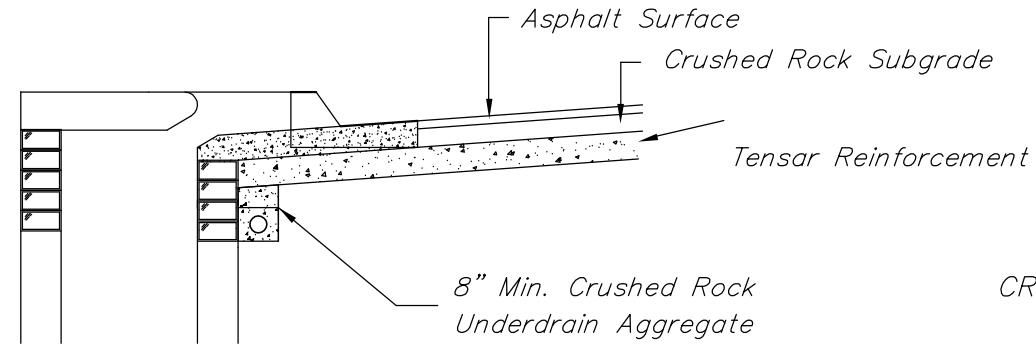


8" Min. Crushed Rock Underdrain Aggregate

(Min. 16 Perforations Per Lin. Ft. @ 1/4" Dia.)  
Perforations To Be on Bottom Half



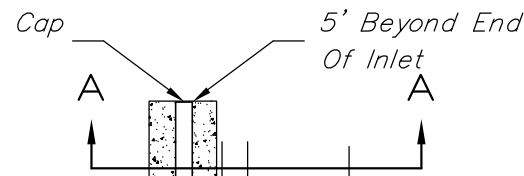
8" Min. Crushed Rock Underdrain Aggregate

**CRUSHED ROCK UNDERDRAIN AGGREGATE GRADATION REQUIREMENTS**

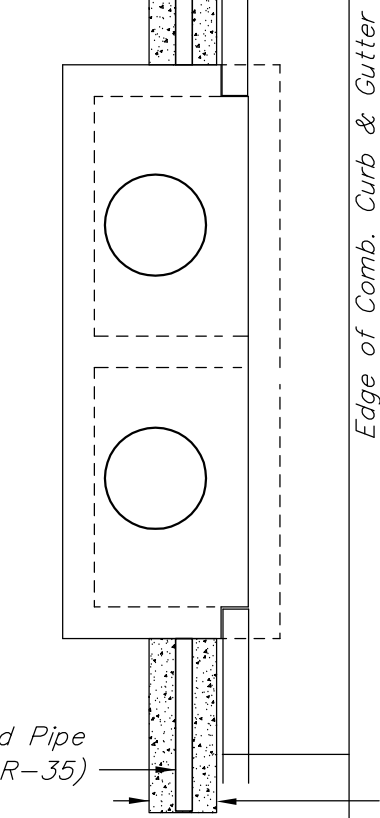
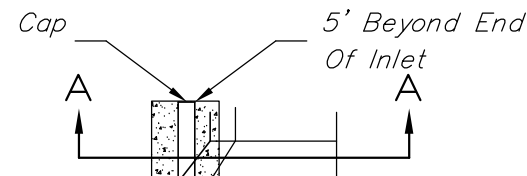
Percent of Aggregate Retained

1 1/2"	0
3/4"	15-60
# 4	40-80
#40	74-92
P-200	4-12

Rock Quality Shall Be The Same As Specified For Coarse Aggregate For Asphalt Concrete Mixes.



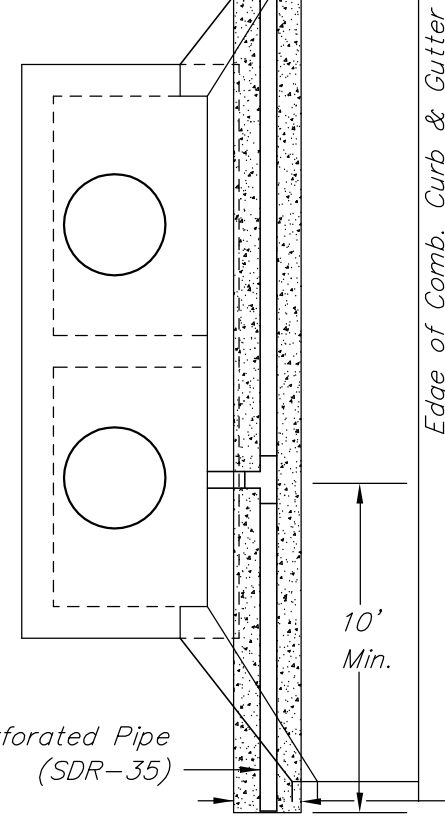
**SECTION A-A**



4" Dia. PVC Perforated Pipe (SDR-35)

12" Crushed Rock Underdrain Aggregate W/ Filter Fabric

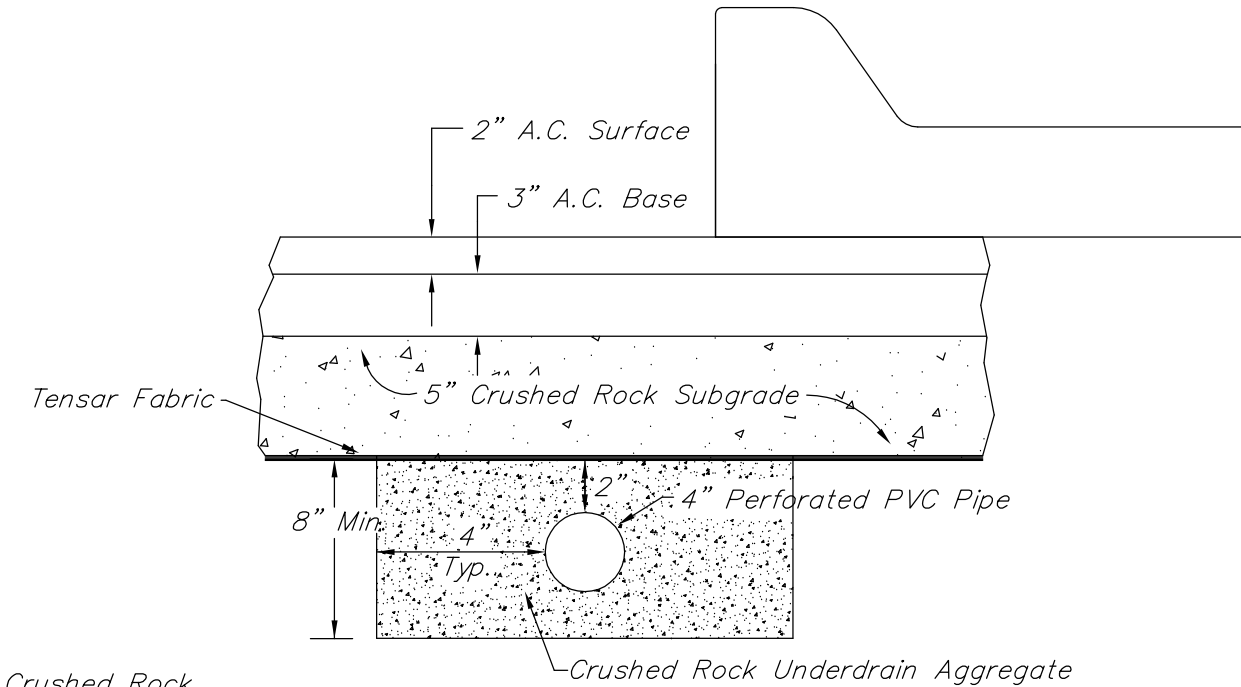
Type 1 & 2 Inlet



4" Dia. PVC Perforated Pipe (SDR-35)

12" Crushed Rock Underdrain Aggregate W/ Filter Fabric

Type 1-A Inlet



NOTE: Place 4" PVC Perforated Pipe at all drainage sump locations.

Cost of Underdrain System to be incidental to the Reinforced Crushed Rock Subgrade.

See Sheet 39 for Underdrain Pipe Connection Details

**PAVEMENT UNDERDRAIN DETAIL**

REV. 11-22-00, MCG

J:\Civil\03431\dwg\Details\03431ed3.dwg 6/30/2004 1:57:41 PM CST

<p>THE CITY OF WICHITA CITY ENGINEER'S OFFICE CITY HALL - SEVENTH FLOOR 455 NORTH MAIN STREET WICHITA, KANSAS 67202 (316) 268-4501 (316) 268-4114 FAX</p>	<b>PAVEMENT UNDERDRAIN DETAIL</b>	
	JIM ARMOUR, P.E. - CITY ENGINEER	
	PROJECT NUMBER 472-83855	INDEX CODE
	DATE MAR 96	SHEET 12 OF 37