

BENCHMARKS:
 BM #1: "I" Cut on Top of Curb at West Line of Lot 7, Block A, Auburn Hills 5th Addition. Elev. = 207.73 (City Datum)

BM #2: Disc in Back of Curb, North of Front Corner Common to Lots 23 and 24, Block D, Auburn Hills 12th Addition. Elev. = 191.84 (City Datum)

BM #3: "I" Cut in Middle of Curb Inlet Top Adjacent to the South Corner of Lot 15, Block B. Elev. = 196.44 (City Datum)

Curve #3
Curve Data Based on Centerline
Rad. = 400' Delta = 20° 24' 02" Tangent = 71.97'
Arc = 142.42' L.C. = 141.67' Def/Ft. = 4.29727 Min.

Station	Arc	FACE CHORD LENGTHS		Defl.	T. Defl.
		8' Lt.	8' Rt.		
7+43.90	-	-	-	0'00'00"	0'00'00"
7+50.00	6.10'	5.72'	6.48'	0'26'13"	0'26'13"
7+75.00	25.00'	23.43'	26.56'	1'47'26"	2'13'38"
8+00.00	25.00'	23.43'	26.56'	1'47'26"	4'01'04"
8+25.00	25.00'	23.43'	26.56'	1'47'26"	5'48'30"
8+50.00	25.00'	23.43'	26.56'	1'47'26"	7'35'56"
8+75.00	25.00'	23.43'	26.56'	1'47'26"	9'23'22"
8+86.32	11.32'	10.61'	12.03'	0'48'39"	10'12'01"

Curve #2
Curve Data Based on Centerline
Rad. = 1200' Delta = 19'06" 15" Tangent = 201.93'
Arc = 400.12' L.C. = 398.27' Def/Ft. = 1.43238 Min.

Station	Arc	FACE CHORD LENGTHS		Defl.	T. Defl.
		8' Lt.	8' Rt.		
3+43.78	-	-	-	0'00'00"	0'00'00"
3+50.00	6.22'	6.35'	6.09'	0'08'54"	0'08'54"
3+64.70	14.70'	15.01'	14.39'	0'21'03"	0'29'58"
3+73.12	8.42'	8.60'	8.24'	0'12'03"	0'42'01"
3+75.00	1.88'	1.92'	1.84'	0'02'41"	0'44'43"
4+00.00	25.00'	25.52'	24.48'	0'35'48"	1'20'32"
4+25.00	25.00'	25.52'	24.48'	0'35'48"	1'56'20"
4+50.00	25.00'	25.52'	24.48'	0'35'48"	2'32'09"
4+75.00	25.00'	25.52'	24.48'	0'35'48"	3'07'57"
5+00.00	25.00'	25.52'	24.48'	0'35'48"	3'43'46"
5+25.00	25.00'	25.52'	24.48'	0'35'48"	4'19'34"
5+50.00	25.00'	25.52'	24.48'	0'35'48"	4'55'23"
5+75.00	25.00'	25.52'	24.48'	0'35'48"	5'31'12"
6+00.00	25.00'	25.52'	24.48'	0'35'48"	6'07'00"
6+25.00	25.00'	25.52'	24.48'	0'35'48"	6'42'49"
6+37.52	12.52'	12.78'	12.26'	0'17'56"	7'00'45"
6+46.00	8.48'	8.66'	8.30'	0'12'09"	7'12'53"
6+50.00	4.00'	4.08'	3.92'	0'05'44"	7'18'37"
6+75.00	25.00'	25.52'	24.48'	0'35'48"	7'54'26"
6+76.03	1.03'	1.05'	1.01'	0'01'28"	7'55'54"
7+00.00	23.97'	24.47'	23.47'	0'34'20"	8'30'14"
7+04.16	4.16'	4.25'	4.07'	0'05'52"	8'36'12"
7+16.91	12.75'	13.02'	12.48'	0'18'16"	8'54'28"
7+25.00	8.09'	8.26'	7.92'	0'11'35"	9'06'03"
7+43.90	18.90'	19.29'	18.51'	0'27'04"	9'33'07"

WATER VALVE LOCATION TABLE

VALVE NUMBER	BASELINE STATION	OFFSET DISTANCE	OFFSET DIRECTION
V3	7+03.74	24' & 28'	Rt.

Paving contractor will be responsible to operate all water valves on the project, in the presence of the inspector, to ensure accessibility to the valves, and that all valves are left in the "ON" position when the project is completed.

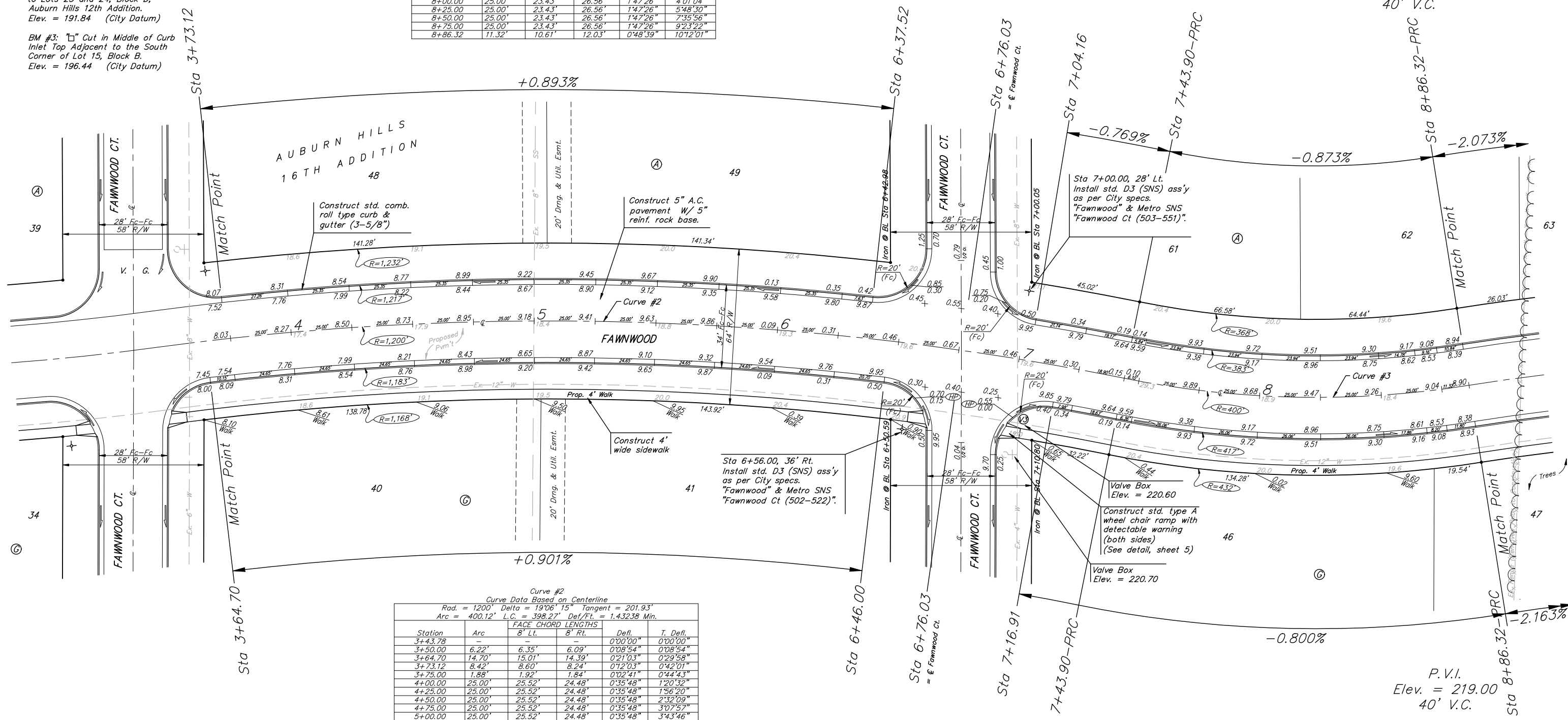
Trees and shrubs in public right-of-way which are in direct conflict with proposed new construction shall be removed by the Contractor ONLY with the Developer or Baughman Company approval. Trees and shrubs which are not in direct conflict with proposed new construction shall be saved and protected from damage.

NOTE: ROLL TYPE CURB & GUTTER TO BE CONSTRUCTED ON THE PAVEMENT SHOWN ON THIS SHEET. TOP OF CURB ELEVATIONS ARE GIVEN FOR FULL HEIGHT CURB.

P.V.I.
Elev. = 220.19
No V.C.

P.V.I.
Elev. = 219.00
40' V.C.

Scale: 1" = 20'
• = Iron



Baughman AUBURN HILLS 16TH ADD. - PH. II
FAWNWOOD
 Sta 3+73.12 to Sta 8+86.32

Baughman Company, P.A. 315 8th St. W. Dublin, OH 47111 P 3162627271 F 3162620149
 ENGINEERING | SURVEYING | PLANNING | LANDSCAPE ARCHITECTURE

PROJECT NUMBER: 472-84291
 REVISIONS:

DESIGN: AEG
 APPROVED: [Signature]
 SCALE: Noted
 SHEET: 8 OF 61

AuburnHills16th_PhaseII_Sht2 06-02-E302