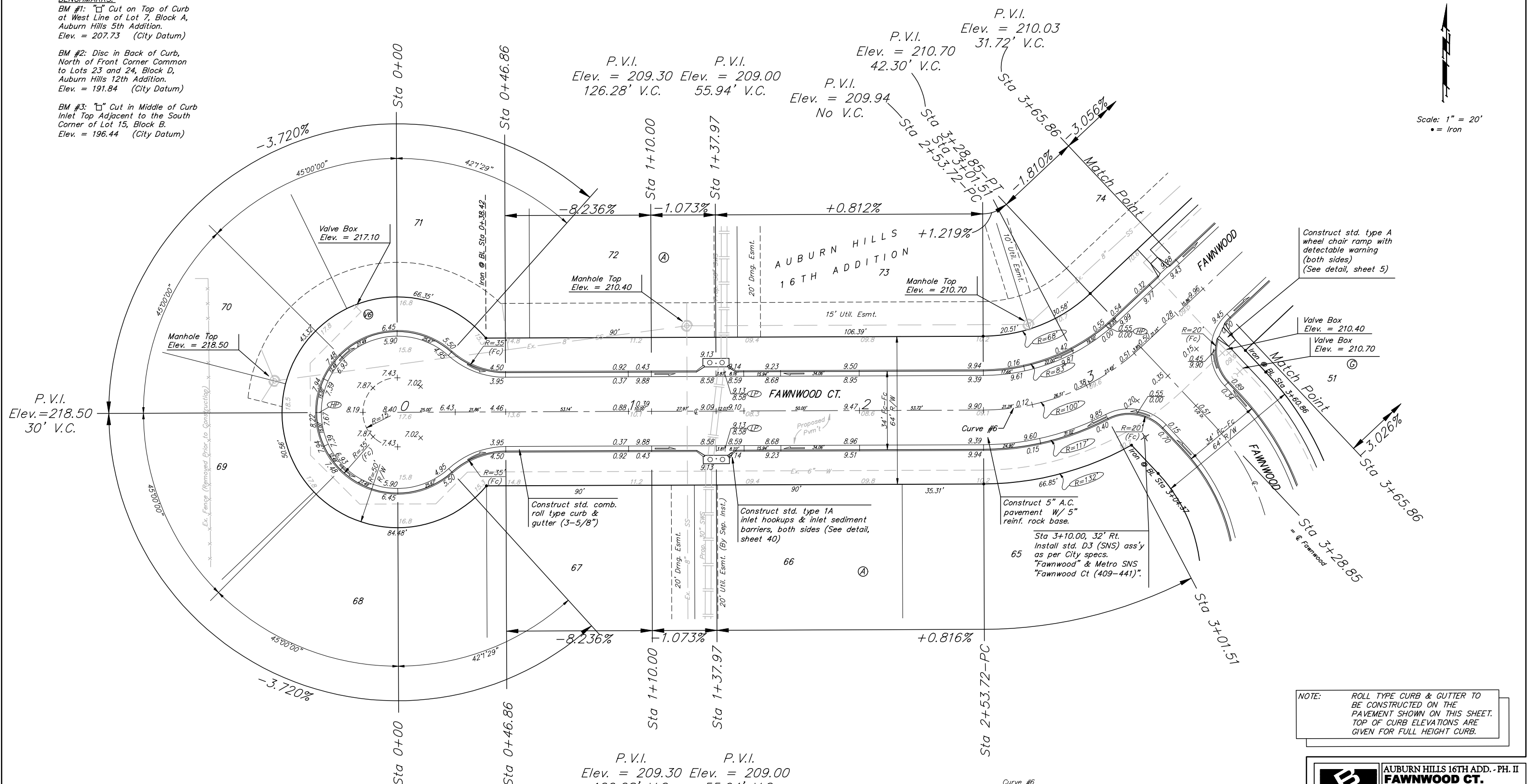
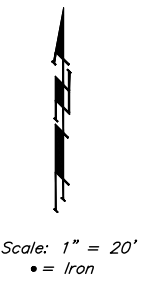


**BENCHMARKS:**  
 BM #1: "Cut on Top of Curb at West Line of Lot 7, Block A, Auburn Hills 5th Addition. Elev. = 207.73 (City Datum)

BM #2: Disc in Back of Curb, North of Front Corner Common to Lots 23 and 24, Block D, Auburn Hills 12th Addition. Elev. = 191.84 (City Datum)

BM #3: "Cut in Middle of Curb Inlet Top Adjacent to the South Corner of Lot 15, Block B. Elev. = 196.44 (City Datum)



P.V.I. Elev. = 218.50  
 30' V.C.

P.V.I. Elev. = 209.30  
 126.28' V.C.

P.V.I. Elev. = 209.00  
 55.94' V.C.

P.V.I. Elev. = 209.94  
 No V.C.

P.V.I. Elev. = 210.70  
 42.30' V.C.

P.V.I. Elev. = 210.03  
 31.72' V.C.

**NOTE:** ROLL TYPE CURB & GUTTER TO BE CONSTRUCTED ON THE PAVEMENT SHOWN ON THIS SHEET. TOP OF CURB ELEVATIONS ARE GIVEN FOR FULL HEIGHT CURB.

**WATER VALVE LOCATION TABLE**

| VALVE NUMBER | BASELINE STATION | OFFSET DISTANCE | OFFSET DIRECTION |
|--------------|------------------|-----------------|------------------|
| V6           | 0-15.55          | 43.63'          | Lt.              |

Paving contractor will be responsible to operate all water valves on the project, in the presence of the inspector, to ensure accessibility to the valves, and that all valves are left in the "ON" position when the project is completed.

Trees and shrubs in public right-of-way which are in direct conflict with proposed new construction shall be removed by the Contractor ONLY with the Developer or Baughman Company approval. Trees and shrubs which are not in direct conflict with proposed new construction shall be saved and protected from damage.

Curve #6  
 Curve Data Based on Centerline  
 Rad. = 100' Delta = 43°02'55" Tangent = 39.44'  
 Arc = 75.13' L.C. = 73.38' Def/Ft. = 17.18965 Min.

| Station | Arc    | FACE CHORD LENGTHS |        | Defl.    | T. Defl.  |
|---------|--------|--------------------|--------|----------|-----------|
|         |        | B' Lt.             | B' Rt. |          |           |
| 2+53.72 | -      | -                  | -      | 0'00"00" | 0'00"00"  |
| 2+75.00 | 21.28' | 15.93'             | 26.55' | 6'05"48" | 6'05"48"  |
| 3+00.00 | 25.00' | 18.70'             | 31.17' | 7'09"44" | 13'15"32" |
| 3+01.51 | 1.51'  | 1.13'              | 1.89'  | 0'25"57" | 13'41"29" |
| 3+25.00 | 23.49' | 17.58'             | 29.30' | 6'43"47" | 20'25"16" |
| 3+28.85 | 3.85'  | 2.89'              | 4.81'  | 1'06"11" | 21'31"27" |

**Baughman** ENGINEERING | SURVEYING | PLANNING | LANDSCAPE ARCHITECTURE

AUBURN HILLS 16TH ADD. - PH. II  
**FAWNWOOD CT. LOTS 65-73, BLOCK A**  
 Sta 0+00 to Sta 3+65.86

PROJECT NUMBER: 472-84291  
 REVISIONS:

DESIGN: AEO  
 DRAWN: TMS  
 APPROVED: [Signature]  
 DATE: 06/06

SCALE: Noted  
 SHEET: **10 OF 61**

AuburnHills16th\PhaseII\Set4 06-02-E502