

BENCHMARK:  
 "□" CUT ON TOP OF CURB  
 AT WEST LINE OF LOT 7,  
 BLOCK A, AUBURN HILLS 5TH  
 ADD.  
 ELEV. = 1395.13 NGVD29

DISC IN BACK OF CURB,  
 NORTH OF FRONT CORNER  
 COMMON TO LOTS 23 AND 24,  
 BLOCK D, AUBURN HILLS 12TH  
 ADD.  
 ELEV. = 1379.24 NGVD29

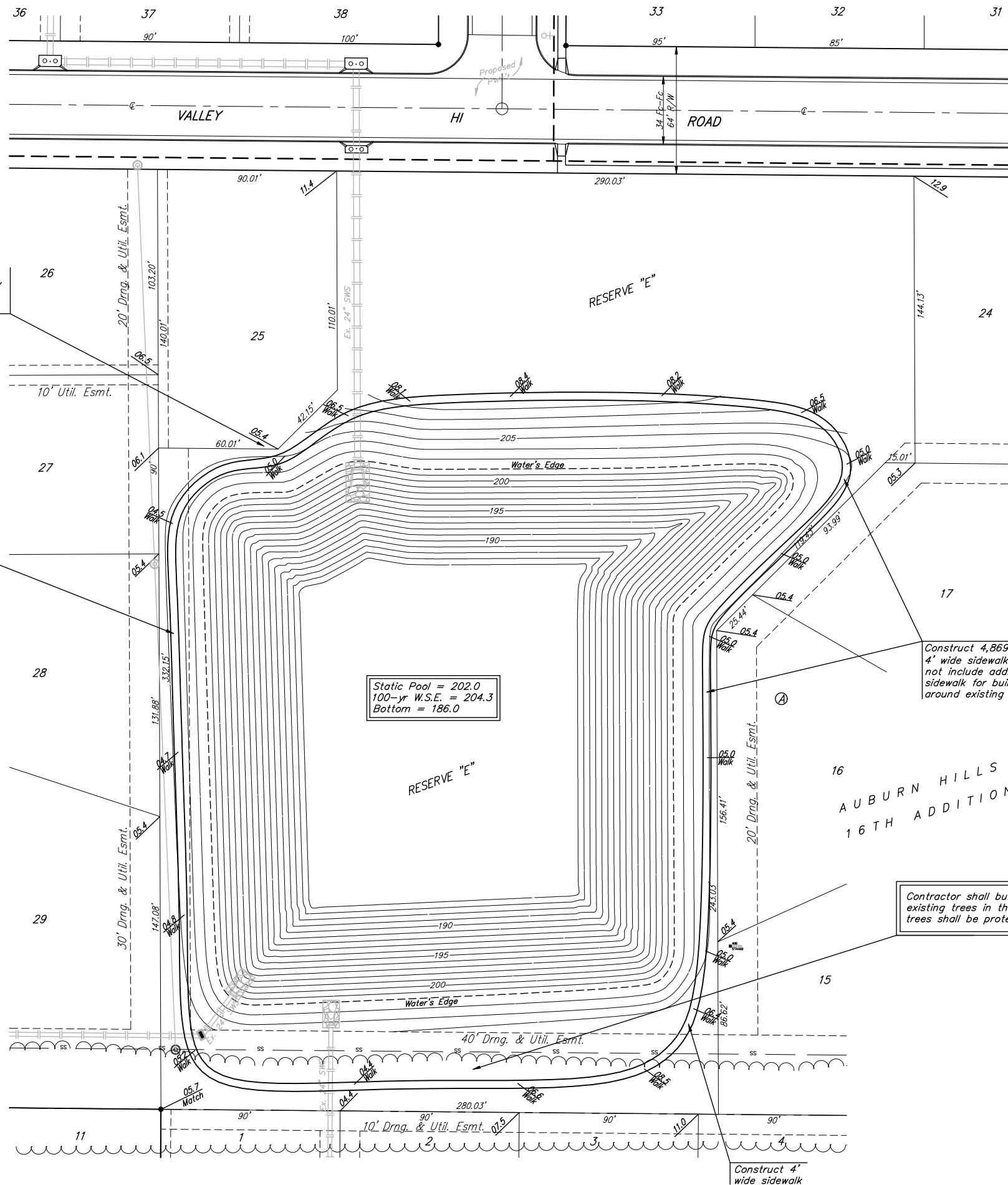
"□" CUT ON CENTER OF  
 CATCH BASIN, NORTH OF LOT  
 CORNER COMMON TO LOTS 1  
 AND 15, BLOCK B, AUBURN  
 HILLS 14TH ADD.  
 ELEV. = 1381.05 NGVD29

Contractor shall coordinate sidewalk  
 construction in this area with Randy  
 Johnson, 519-6031. Future utilities  
 and sewer service in this area.

Construct 4'  
 wide sidewalk

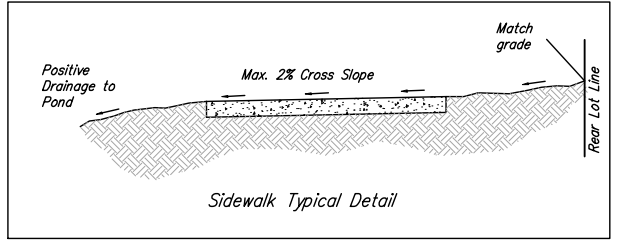
Construct 4,869 L.F  
 4' wide sidewalk. Does  
 not include additional  
 sidewalk for building  
 around existing trees.

Contractor shall build sidewalk around  
 existing trees in this location. Existing  
 trees shall be protected from damage.



Static Pool = 202.0  
 100-yr W.S.E. = 204.3  
 Bottom = 186.0

Cross-slope on any sidewalk  
 shall not exceed 1/4" per foot (or  
 2%). See detail this sheet.  
 Longitudinal slopes shall not  
 exceed 4.5% unless flat areas  
 are provided. Spot grades on  
 walks are given to the center of  
 the walk.



<b>Baughman</b>		AUBURN HILLS 16TH ADD. PHASE 2	
ENGINEERING   SURVEYING   PLANNING   LANDSCAPE ARCHITECTURE		<b>SIDEWALK PLAN</b>	
PROJECT NUMBER 472-64291	DESIGN AEG	DRAWN RDM	
REVISIONS:	APPROVED	DATE 06/06	
	SCALE Noted	SHEET	
		<b>20 OF 61</b>	
Auburn Hills 16th\PHASE 2\Walk Plan.dwg		06-02-E502	