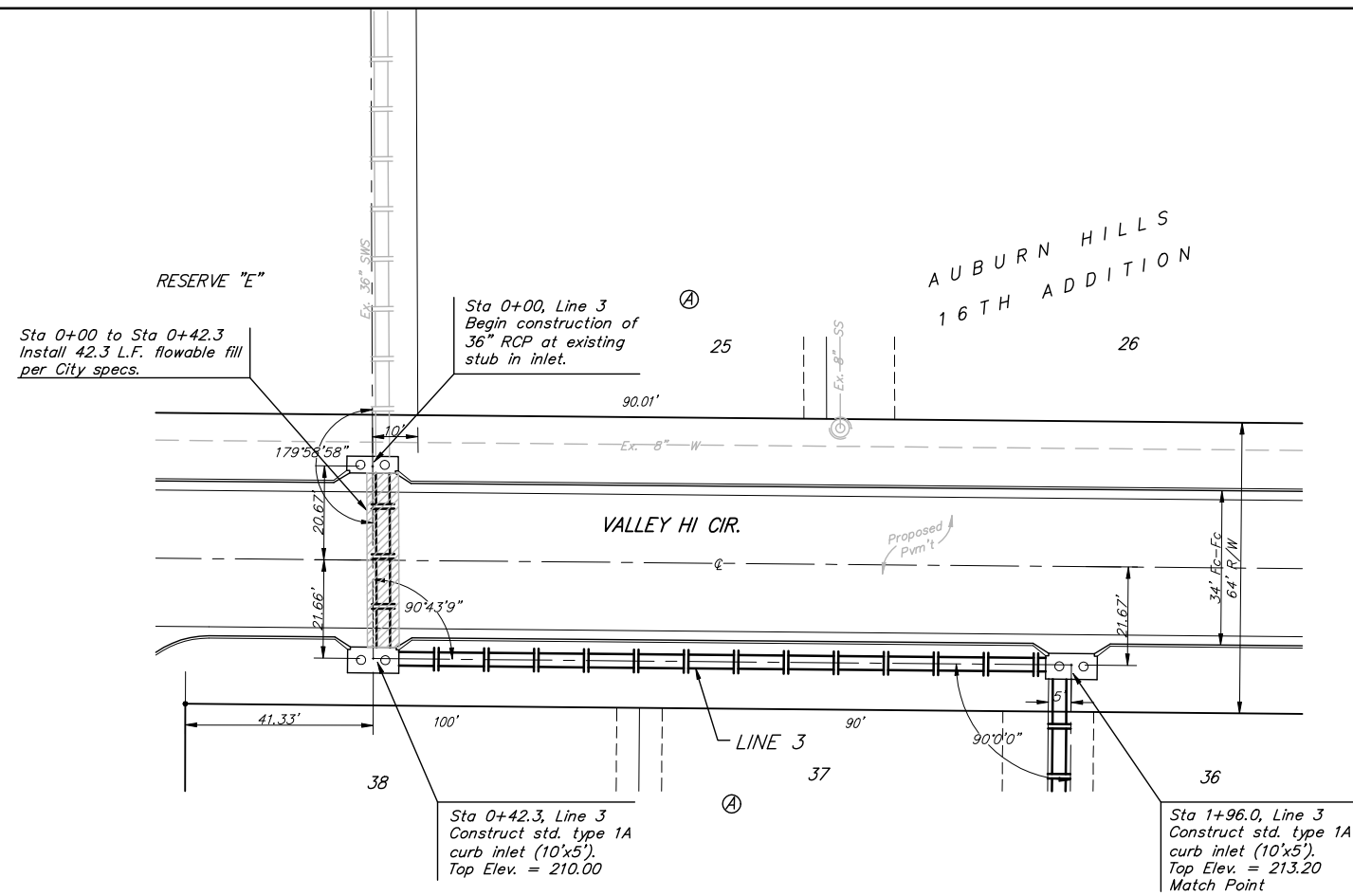


BENCHMARKS:
 BM #1: "Cut on Top of Curb at West Line of Lot 7, Block A, Auburn Hills 5th Addition. Elev. = 207.73 (City Datum)

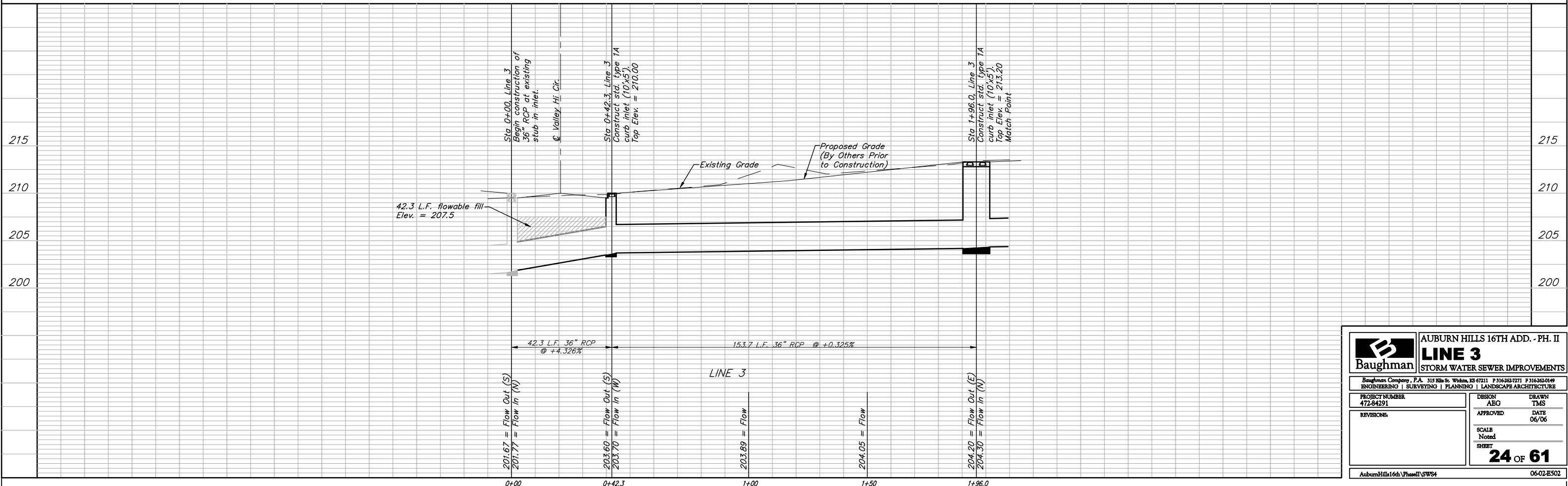
BM #2: Disc in Back of Curb, North of Front Corner Common to Lots 23 and 24, Block D, Auburn Hills 12th Addition. Elev. = 191.84 (City Datum)

BM #3: "Cut in Middle of Curb Inlet Top Adjacent to the South Corner of Lot 15, Block B. Elev. = 196.44 (City Datum)



Scale: 1" = 20' Horizontal
 1" = 5' Vertical
 • = Iron

Remove trees only as necessary for sanitary sewer construction and only with permission of Developer or Baughman Co. Cost of removal to be incidental to lump sum bid item "Site Clearing & Restoration".



		AUBURN HILLS 16TH ADD. - PH. II	
		LINE 3	
ENGINEERING SURVEYING PLANNING LANDSCAPE ARCHITECTURE		STORM WATER SEWER IMPROVEMENTS	
<small>Baughman Company, P.A. 315 Ellis St. Wichita, KS 67211 P 316-262-7771 F 316-262-0149</small>			
PROJECT NUMBER 472-84291	DESIGN ABG	DRAWN TMS	APPROVED DATE 06/06
REVISIONS	SCALE Noted	SHEET 24 OF 61	
AuburnHills16thPhaseII SW54		06-02-E502	