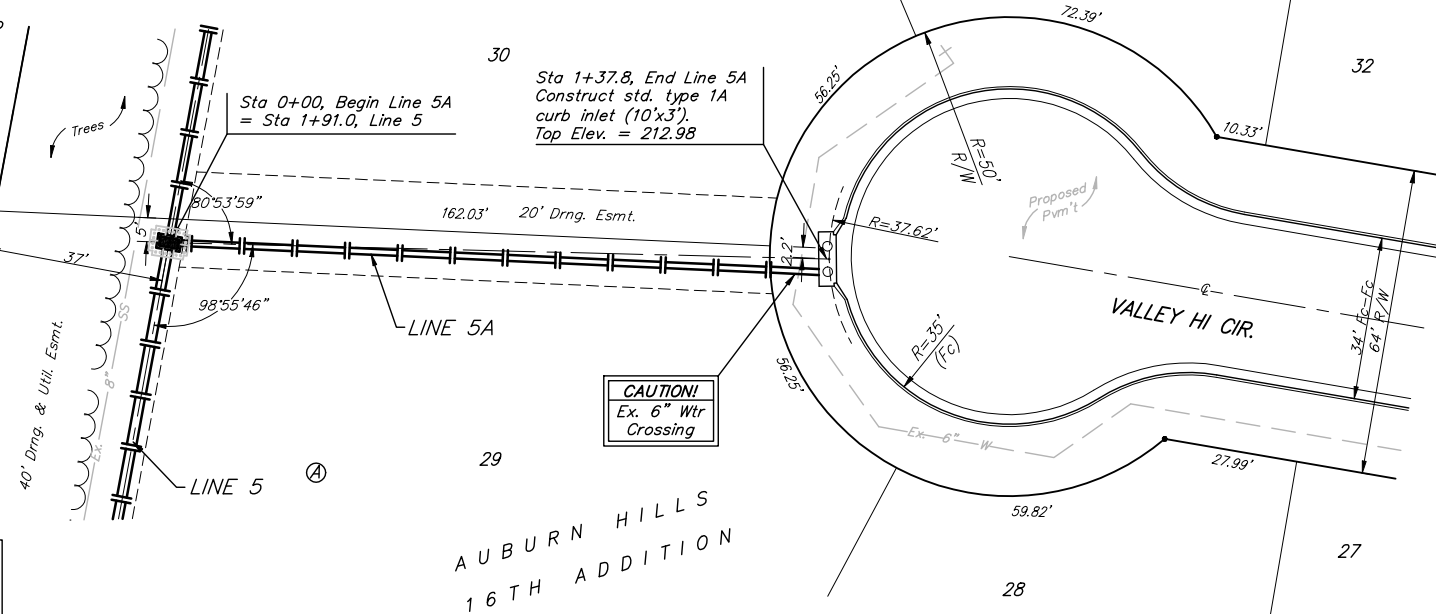


BENCHMARKS:
 BM #1: "C" Cut on Top of Curb at West Line of Lot 7, Block A, Auburn Hills 5th Addition. Elev. = 207.73 (City Datum)

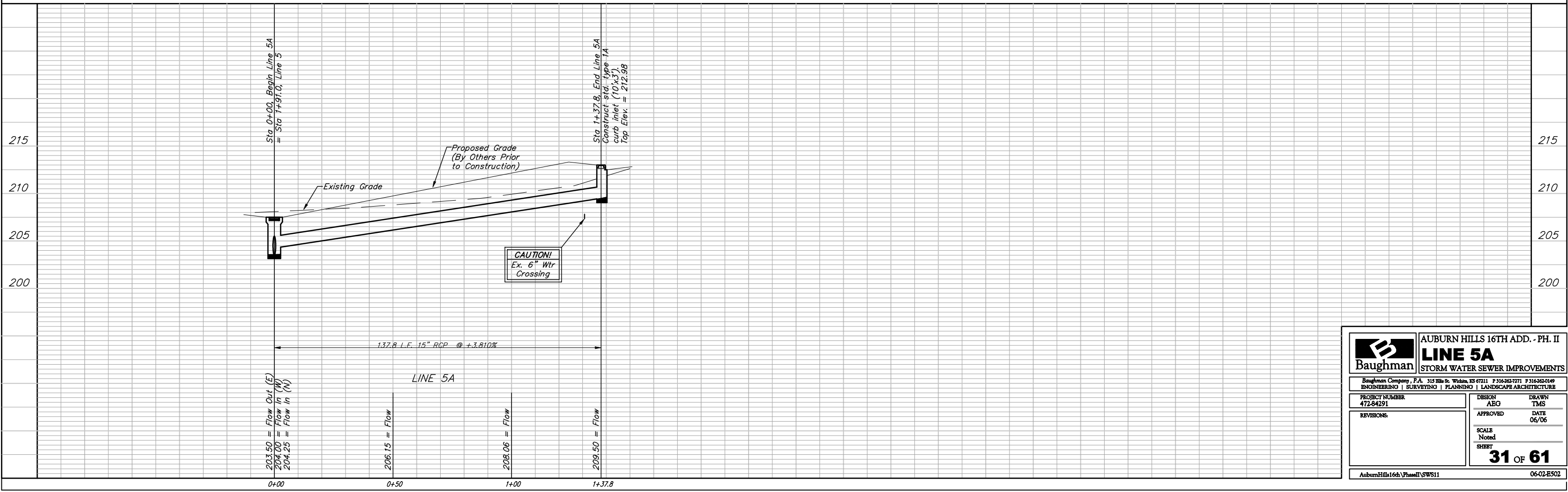
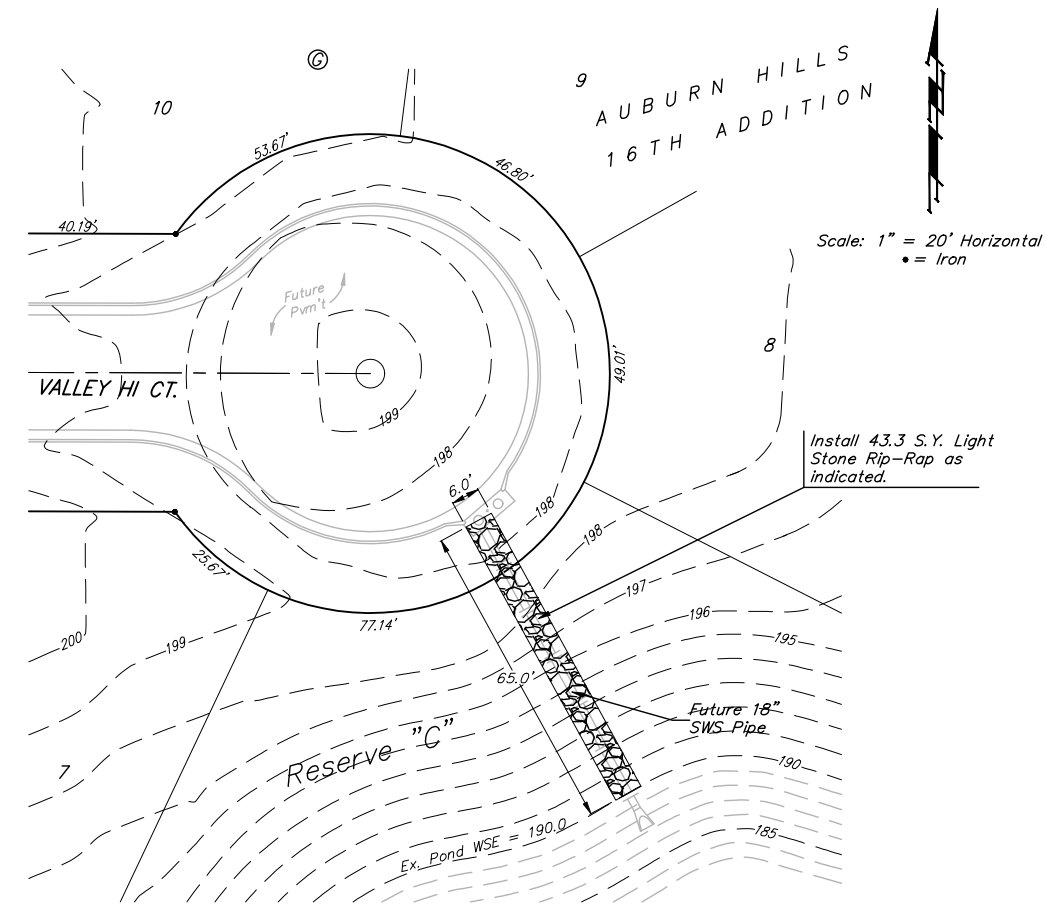
BM #2: Disc in Back of Curb, North of Front Corner Common to Lots 23 and 24, Block D, Auburn Hills 12th Addition. Elev. = 191.84 (City Datum)

BM #3: "C" Cut in Middle of Curb Inlet Top Adjacent to the South Corner of Lot 15, Block B. Elev. = 196.44 (City Datum)

AUBURN HILLS 5TH ADDITION



Remove trees only as necessary for sanitary sewer construction and only with permission of Developer or Baughman Co. Cost of removal to be incidental to lump sum bid item "Site Clearing & Restoration".



Baughman		AUBURN HILLS 16TH ADD. - PH. II	
LINE 5A		STORM WATER SEWER IMPROVEMENTS	
Baughman Company, P.A. 315 Ellis St. Wichita, KS 67211 P 316-262-7771 F 316-262-0149 ENGINEERING SURVEYING PLANNING LANDSCAPE ARCHITECTURE			
PROJECT NUMBER 472-84291	DESIGN ABG	DRAWN TMS	APPROVED DATE 06/06
REVISIONS	SCALE Noted	SHEET 31 OF 61	
AuburnHills16th\PhaseII\SW511		06-02-E502	