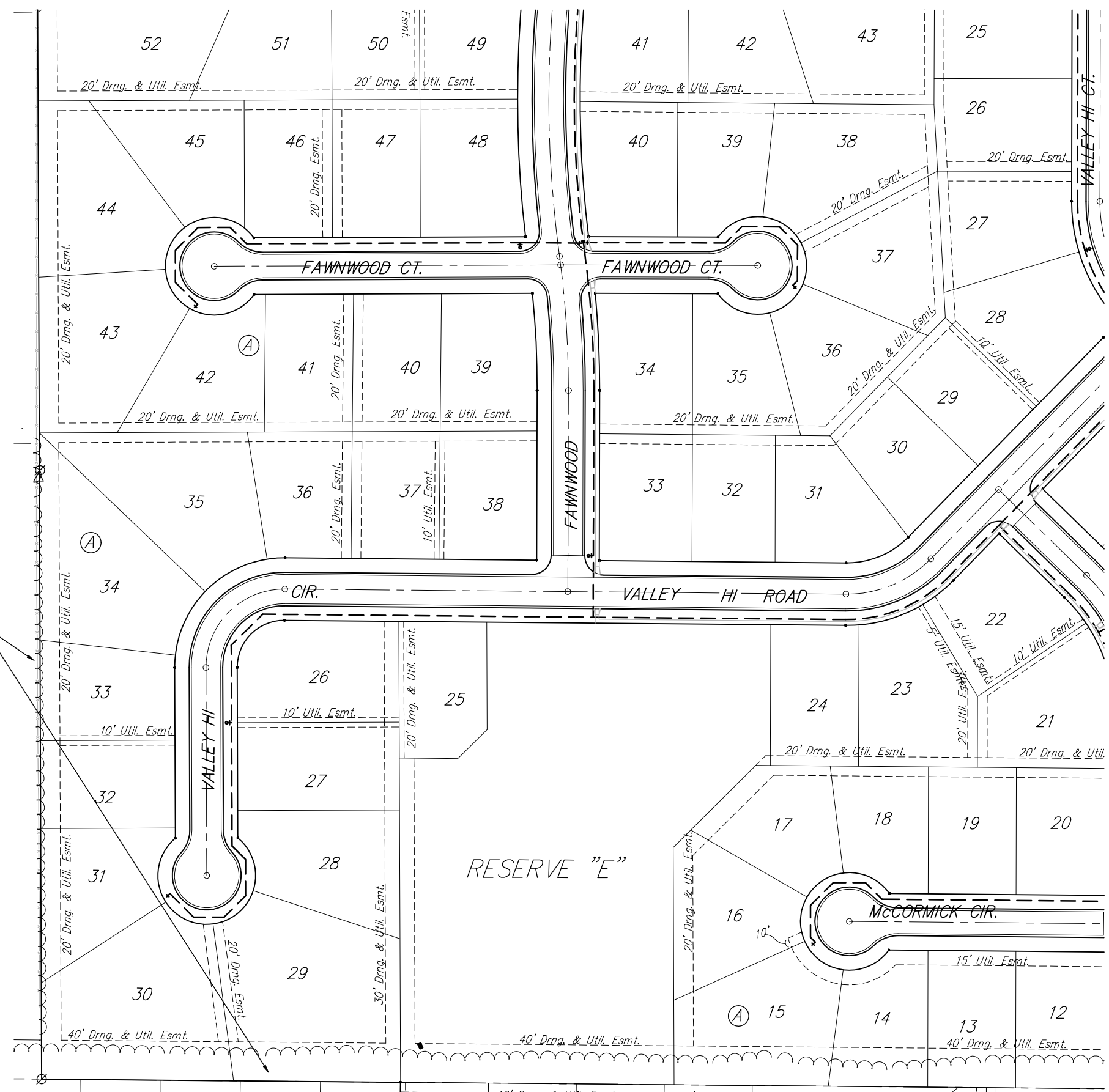


All trees in these areas shall remain and be protected from damage. No trees shall be removed without permission from the developer or Baughman Company.



		Auburn Hills 16th Add. PH. II	
		<b>Clearing Plan</b>	
Baughman Company, P.A. 315 Hill St. Wichita, KS 67211 P 316-262-7271 F 316-262-0149 ENGINEERING   SURVEYING   PLANNING   LANDSCAPE ARCHITECTURE		Street Improvements	
PROJECT NUMBER 472-64291	DESIGN AEO	DRAWN RDM	
REVISIONS:	APPROVED	DATE 06/06	
	SCALE Noted	SHEET	
		<b>33 OF 61</b>	
Auburn Hills 16th\PHASE 2\Cleaing Plan.dwg		06-02-E502	