

**Benchmarks**  
 BM - City of Wichita Monument  
 Disc Set in Concrete Post  
 @ Northeast Corner of  
 Meridian and 27th Street  
 Elev. = 1287.11

Century Pacific Housing Partnership IX  
 2836 S. Richmond

M. Golder  
 2505 W. 27th Street

Automart Leasing  
 2799 S. Meridian

L. Kilts  
 2785 S. Meridian

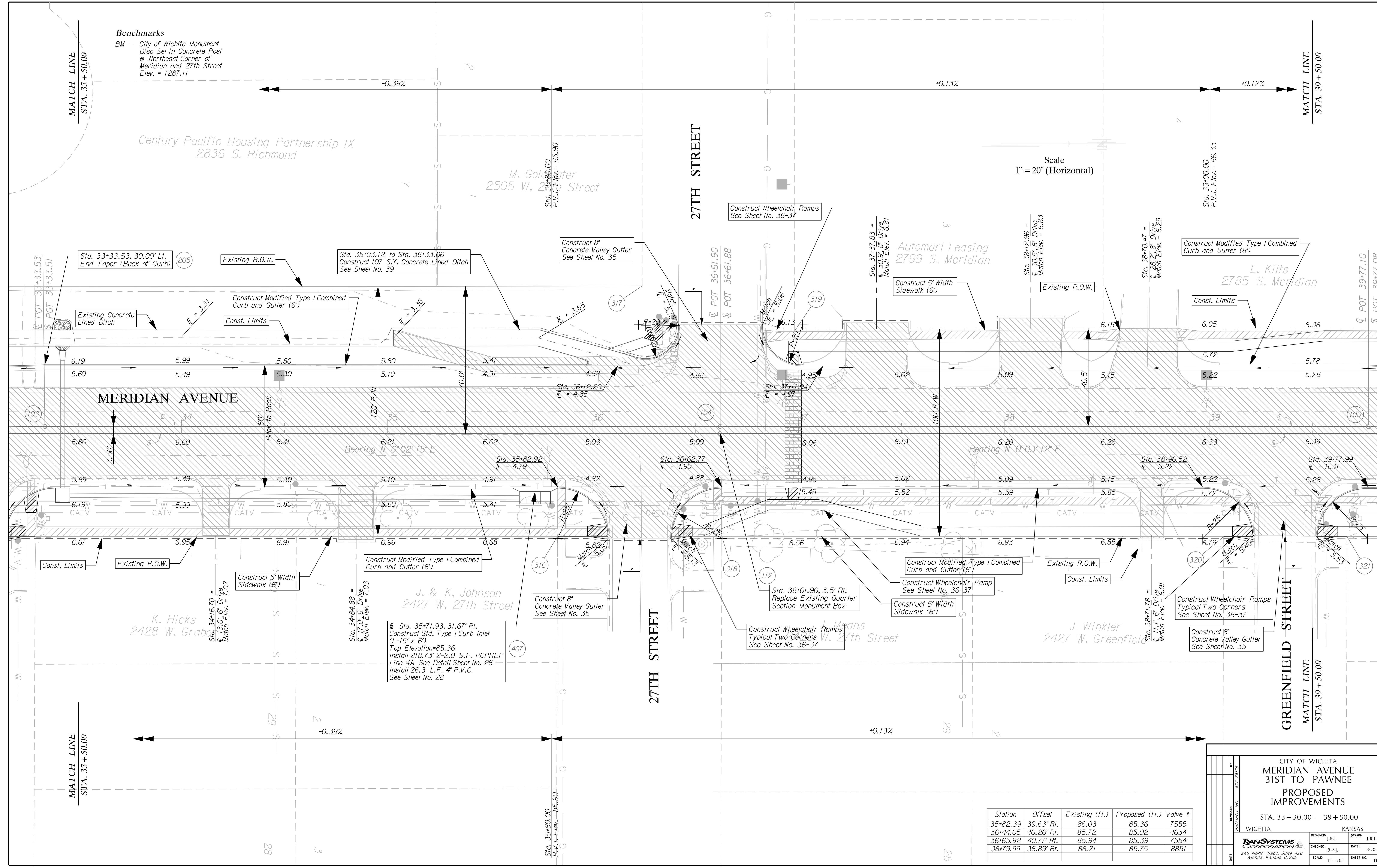
K. Hicks  
 2428 W. Graber

J. & K. Johnson  
 2427 W. 27th Street

J. Winkler  
 2427 W. Greenfield

J. Winkler  
 2427 W. Greenfield

Scale  
 1" = 20' (Horizontal)



Station	Offset	Existing (ft.)	Proposed (ft.)	Valve #
35+82.39	39.63' Rt.	86.03	85.36	7555
36+44.05	40.26' Rt.	85.72	85.02	4634
36+65.92	40.77' Rt.	85.94	85.39	7554
36+79.99	36.89' Rt.	86.21	85.75	8851

CITY OF WICHITA  
 MERIDIAN AVENUE  
 31ST TO PAWNEE  
 PROPOSED  
 IMPROVEMENTS  
 STA. 33+50.00 - 39+50.00

WICHITA KANSAS

DESIGNED: J.R.L. DRAWN: J.R.L.  
 CHECKED: B.A.L. DATE: 3/2005  
 SCALE: 1" = 20' SHEET NO: 11

TRANSYSTEMS CORPORATION  
 245 North Waco, Suite 420  
 Wichita, Kansas 67202

8:\w053\0005\road\pp05.dwg