

**PHASE I**  
 2" SC-1 ASPHALT OVERLAY ON EAST NORTHBOUND LANE FROM STA. 11+52.66 TO STA. 42+00.00. 2" SC-1 ASPHALT OVERLAY ON SOUTHBOUND LANES FROM STA. 42+00.00 TO STA. 65+14.48. CONSTRUCT THE WEST 2/3 OF MERIDIAN FROM STA. 11+52.66 TO STA. 41+93.55. ONE WAY TRAFFIC BETWEEN STA. 11+53.66 - STA. 41+93.55. CONSTRUCT EAST 1/2 OF MERIDIAN FROM STA. 44+93.70 TO STA. 62+73.90

**PHASE IA**  
 CONSTRUCT SE CORNER OF INTERSECTION OF MERIDIAN AND PAWNEE

**PHASE IB**  
 CONSTRUCT NE CORNER OF INTERSECTION OF MERIDIAN AND PAWNEE.

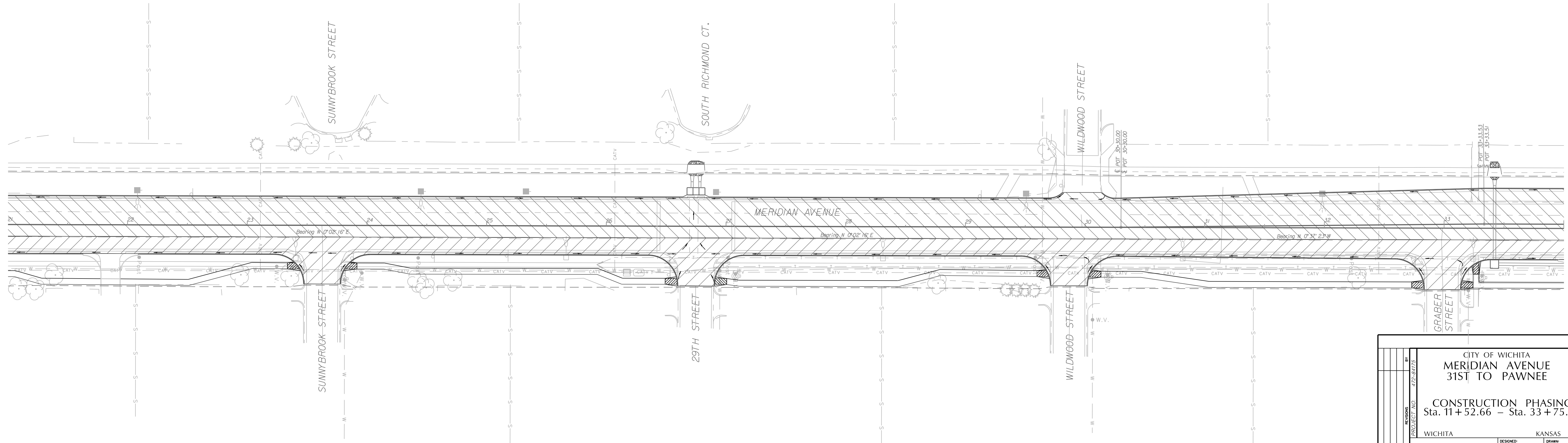
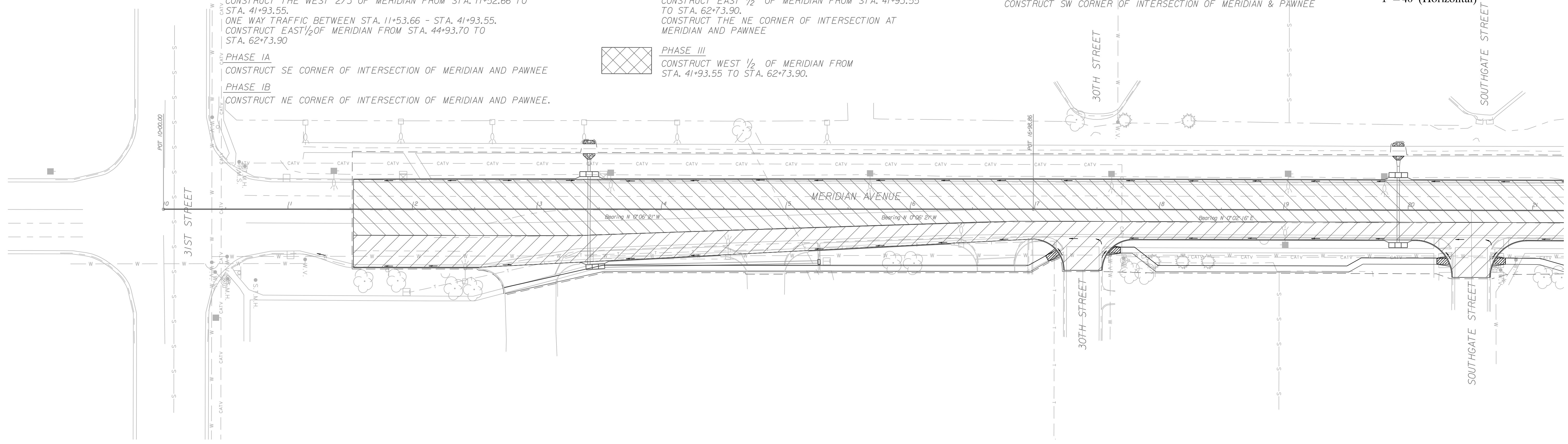
**PHASE II**  
 CONSTRUCT THE REMAINING 1/3 EAST OF MERIDIAN FROM STA. 11+52.66 TO STA. 41+93.55. TEMP. ASPHALT TO TIE BACK INTO EXISTING. CONSTRUCT EAST 1/2 OF MERIDIAN FROM STA. 41+93.55 TO STA. 62+73.90. CONSTRUCT THE NE CORNER OF INTERSECTION AT MERIDIAN AND PAWNEE

**PHASE III**  
 CONSTRUCT WEST 1/2 OF MERIDIAN FROM STA. 41+93.55 TO STA. 62+73.90.

**PHASE IIIA**  
 CONSTRUCT NE CORNER OF INTERSECTION OF MERIDIAN & PAWNEE

**PHASE IIIB**  
 CONSTRUCT SW CORNER OF INTERSECTION OF MERIDIAN & PAWNEE

Scale  
 1" = 40' (Horizontal)



CITY OF WICHITA		MERIDIAN AVENUE		31ST TO PAWNEE	
CONSTRUCTION PHASING					
Sta. 11+52.66 - Sta. 33+75.00					
WICHITA, KANSAS					
DESIGNED BY	J.R.L.	DRAWN BY	J.R.L.	DATE	3/2005
CHECKED BY	B.A.L.	SCALE	1" = 40'	SHEET NO.	50

TRANSYSTEMS CORPORATION  
 245 North Waco, Suite 420  
 Wichita, Kansas 67202