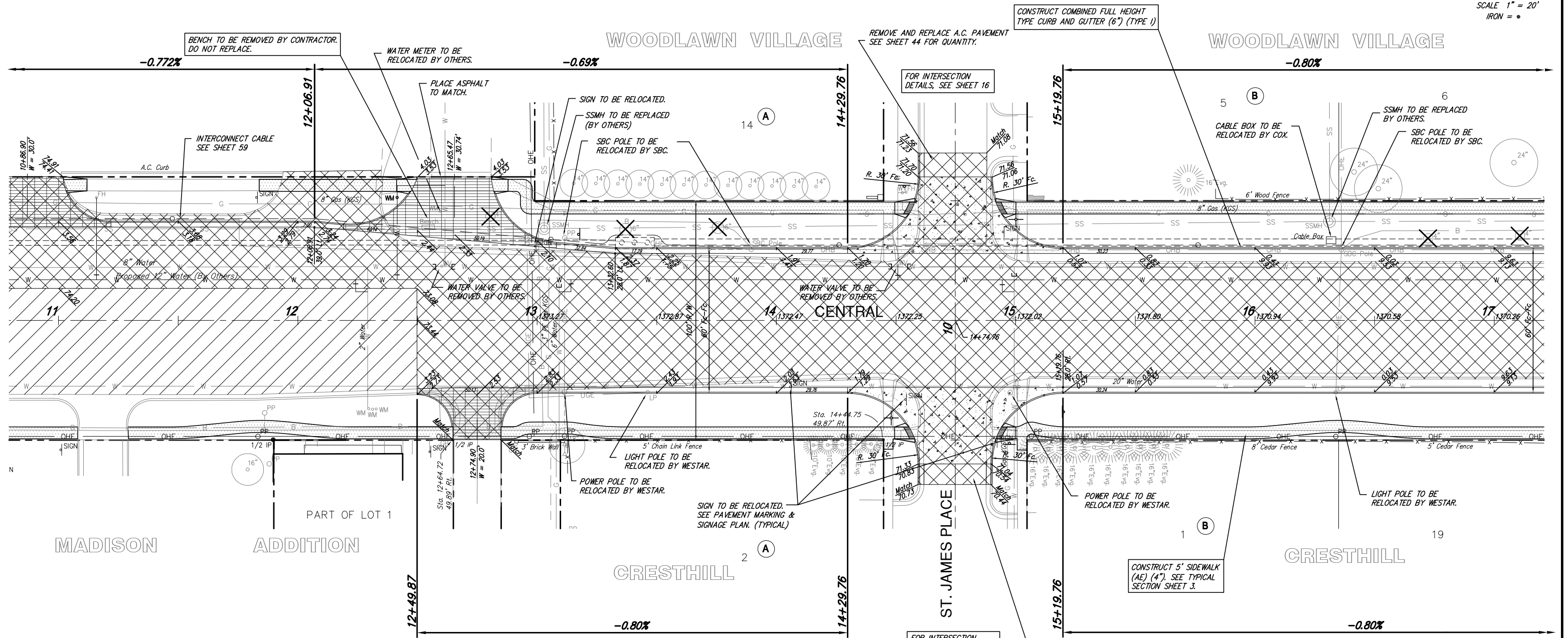


NOTE: SBC POLES ON NORTH SIDE OF CENTRAL TO BE RELOCATED IN PHASES 5 & 6.

STATE	PROJECT NUMBER	FISCAL YEAR	SHEET NUMBER	TOTAL SHEETS
KANSAS	87N-0251-01	2006	7	106

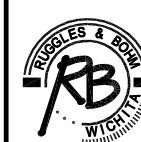


SCALE 1" = 20'
IRON = ●



✕ TREE TO BE REMOVED.

PAVING IMPROVEMENTS
CENTRAL STA. 11+00 TO 17+00
WICHITA, KANSAS



Ruggles & Bohm, P.A.
Engineering, Surveying, Land Planning
924 North Main (316) 264-8008
Wichita, Kansas 67203 (316) 264-4621 fax
www.rbkansas.com E-mail: info@rbkansas.com

DESIGN	KWL	SHEET 7 OF 106
DRAWN	RA	
REVIEW		
UTILITY		

DRAWING FILE	PROJECT NUMBER	DATE
paving (SHT 7)	472-87506	July 10, 2006