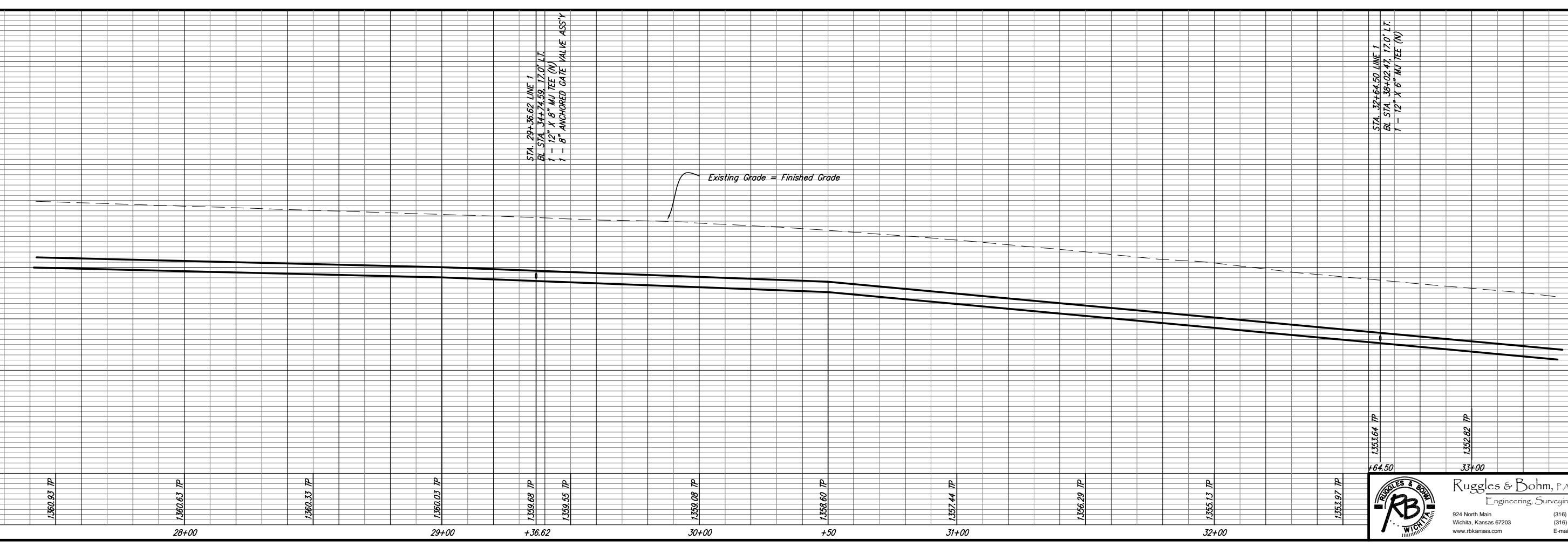
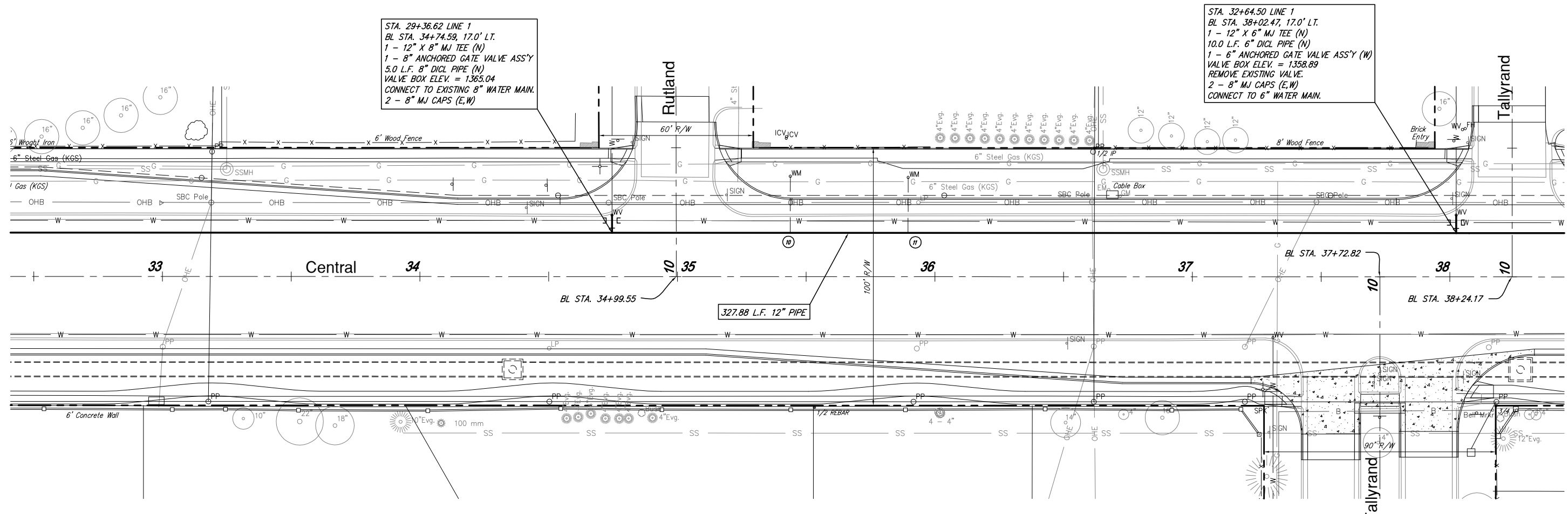


STA. 29+36.62 LINE 1
 BL STA. 34+74.59, 17.0' LT.
 1 - 12" X 8" MJ TEE (N)
 1 - 8" ANCHORED GATE VALVE ASSY
 5.0 L.F. 8" DI CL PIPE (N)
 VALVE BOX ELEV. = 1365.04
 CONNECT TO EXISTING 8" WATER MAIN.
 2 - 8" MJ CAPS (E,W)

STA. 32+64.50 LINE 1
 BL STA. 38+02.47, 17.0' LT.
 1 - 12" X 6" MJ TEE (N)
 10.0 L.F. 6" DI CL PIPE (N)
 1 - 6" ANCHORED GATE VALVE ASSY (W)
 VALVE BOX ELEV. = 1358.89
 REMOVE EXISTING VALVE.
 2 - 8" MJ CAPS (E,W)
 CONNECT TO 6" WATER MAIN.



STA. 29+36.62 LINE 1
 BL STA. 34+74.59, 17.0' LT.
 1 - 12" X 8" MJ TEE (N)
 1 - 8" ANCHORED GATE VALVE ASSY

STA. 32+64.50 LINE 1
 BL STA. 38+02.47, 17.0' LT.
 1 - 12" X 6" MJ TEE (N)

PROJECT NUMBER	448-89893	DESIGN	KWL	DRAWN	RA	DATE	July 11, 2006
DRAWING FILE	water (sheet 8)	UTILITY					
12" Water Main Replacement		WICHITA, KANSAS					
PROJECT ELEVATION	1365						
PROPOSED ELEVATION	1360						
EXISTING ELEVATION	1355						
FINISHED ELEVATION	1350						

Ruggles & Bohm, P.A.
 Engineering, Surveying, Land Planning
 924 North Main
 Wichita, Kansas 67203
 www.rbkansas.com
 (316) 264-8008
 (316) 264-4621 fax
 E-mail: info@rbkansas.com