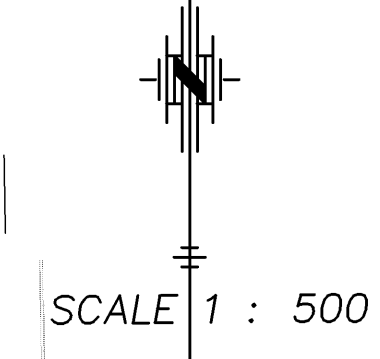


STATE	PROJECT NO.	YEAR	SHEET NO.	TOTAL SHEETS
KANSAS	54-87 K-8258-09	2005	26	54



- STA. 3+106.601, LINE 2 =
 STA. 3+100.000, @ NORTH FRONTAGE RD., 1.525 m LT.
 INSTALL
 1 - FIRE HYDRANT ASSEMBLY (E)
 L = 0.768 m
 BURY LINE EL. 411.461 m
 VALVE BOX EL. 411.446 m
 1 - ANCHOR VALVE ASSEMBLY 200 mm (8") (E)
 (MJ GATE VALVE) VALVE BOX EL. 411.427 m
 1 - CIMJ PLUG, 200 mm (8") (E)

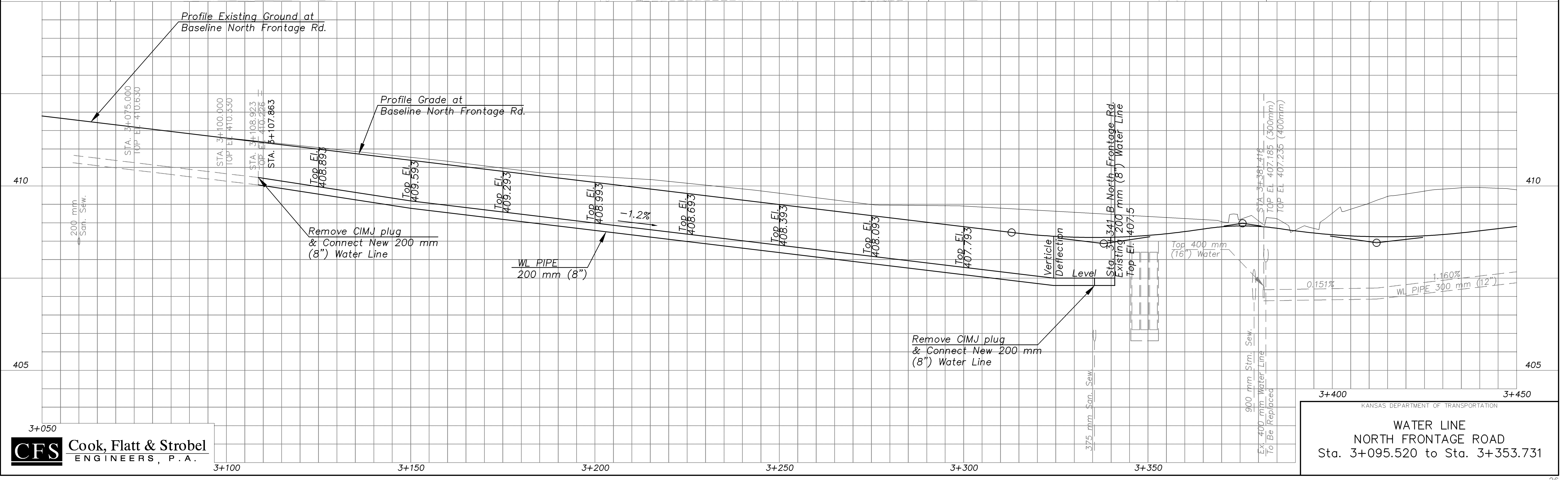
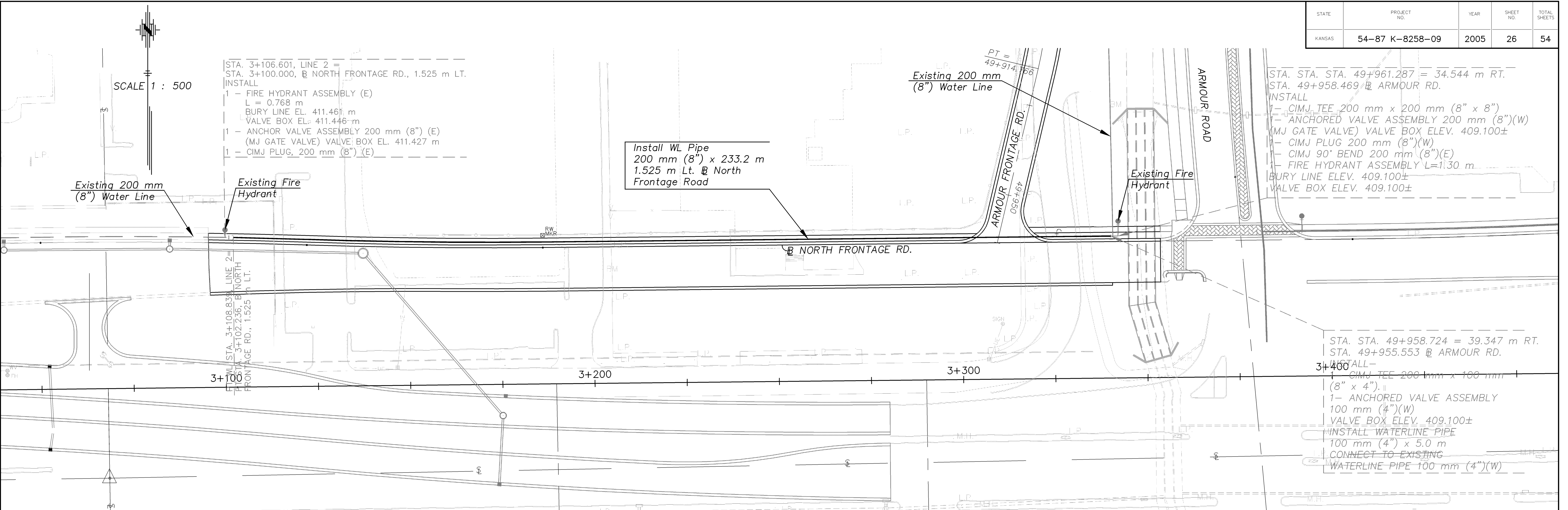
- STA. STA. STA. 49+961.287 = 34.544 m RT.
 STA. 49+958.469 @ ARMOUR RD.
 INSTALL
 1 - CIMJ TEE 200 mm x 200 mm (8" x 8")
 1 - ANCHORED VALVE ASSEMBLY 200 mm (8") (W)
 (MJ GATE VALVE) VALVE BOX ELEV. 409.100±
 1 - CIMJ PLUG 200 mm (8") (W)
 1 - CIMJ 90° BEND 200 mm (8") (E)
 1 - FIRE HYDRANT ASSEMBLY L=1.30 m
 BURY LINE ELEV. 409.100±
 VALVE BOX ELEV. 409.100±

- STA. STA. 49+958.724 = 39.347 m RT.
 STA. 49+955.553 @ ARMOUR RD.
 3+400
 INSTALL -
 1 - CIMJ TEE 200 mm x 100 mm
 (8" x 4")
 1 - ANCHORED VALVE ASSEMBLY
 100 mm (4") (W)
 VALVE BOX ELEV. 409.100±
 INSTALL WATERLINE PIPE
 100 mm (4") x 5.0 m
 CONNECT TO EXISTING
 WATERLINE PIPE 100 mm (4") (W)

Install WL Pipe
 200 mm (8") x 233.2 m
 1.525 m Lt. @ North
 Frontage Road

BY	DATE

REFERENCE NOTED	REFERENCE CHECKED



KANSAS DEPARTMENT OF TRANSPORTATION
WATER LINE
 NORTH FRONTAGE ROAD
 Sta. 3+095.520 to Sta. 3+353.731

3+050
CFS Cook, Flatt & Strobel
 ENGINEERS, P.A.