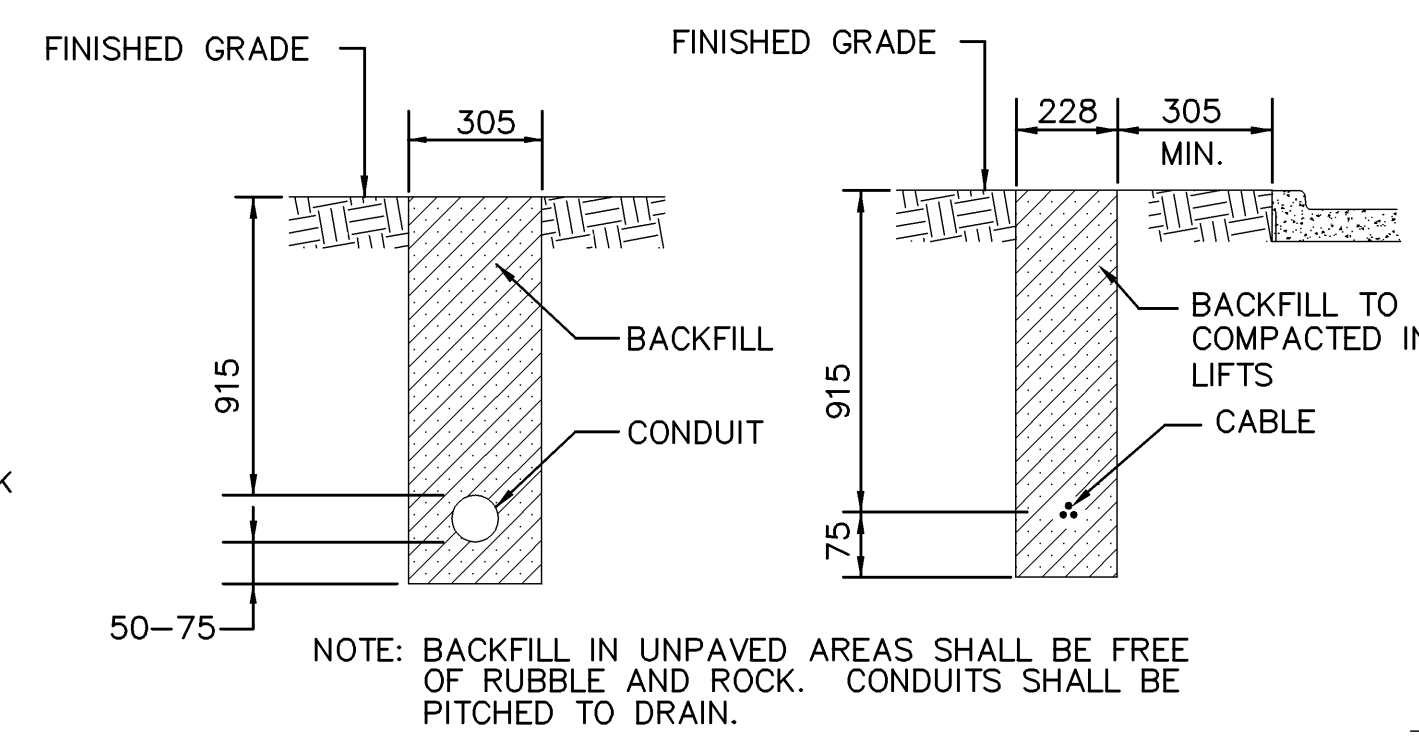
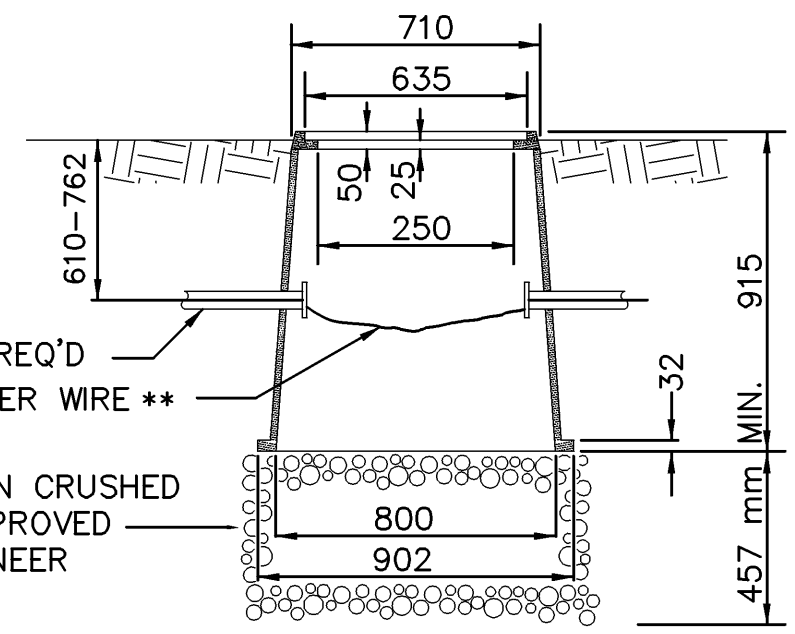
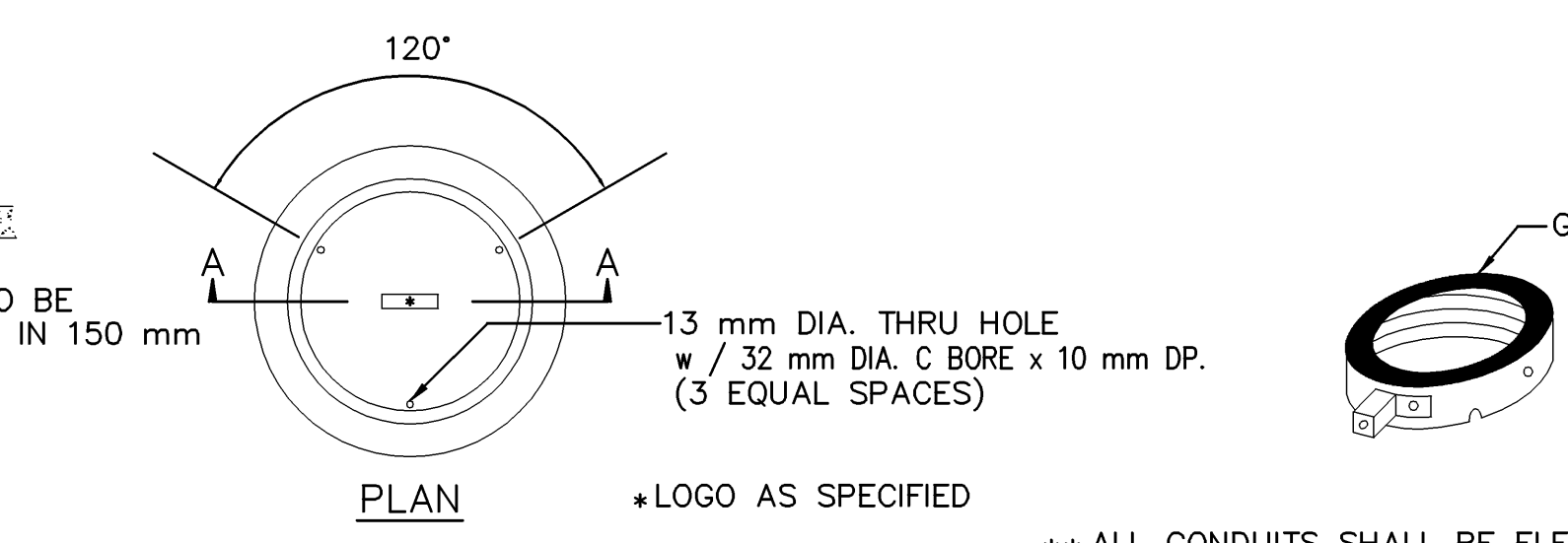


TRENCHING IN PAVED AREAS
(as approved by City Engineer or as shown in the plans)



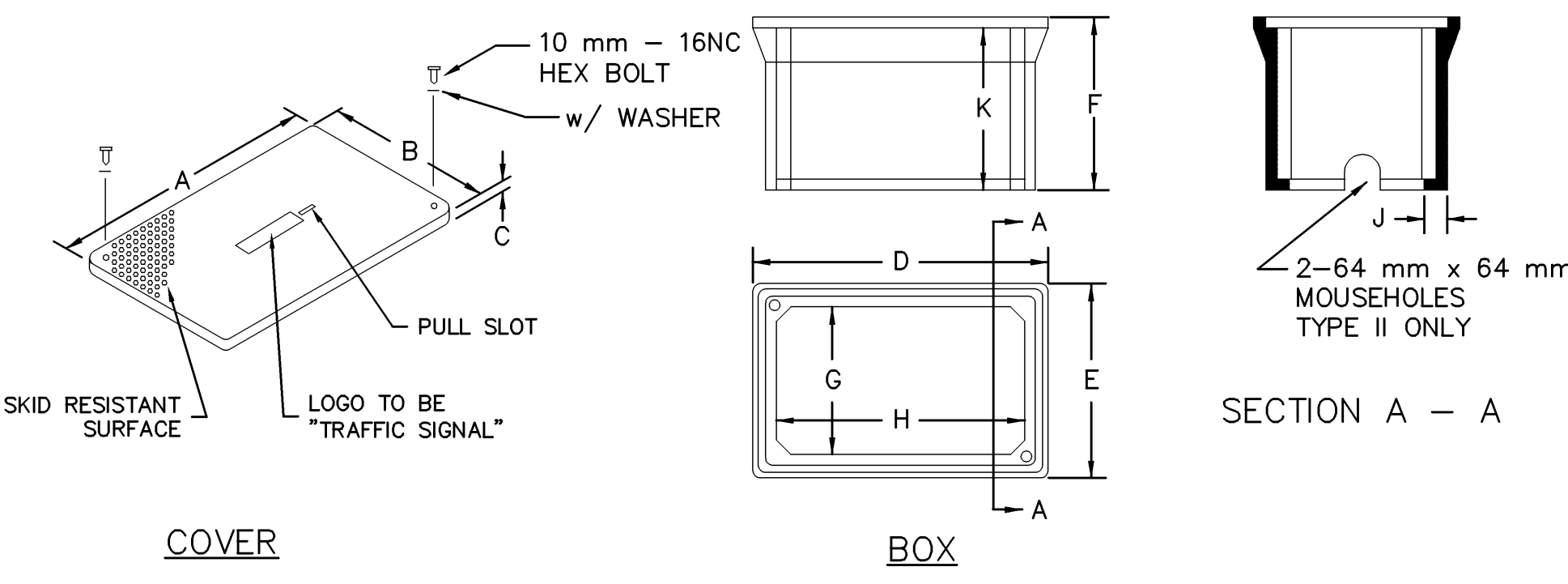
TRENCHING IN UNPAVED AREAS
No Scale

- NOTES:
1. CONTRACTOR SHALL CONTACT ENGINEERING FOR INSPECTION PRIOR TO PLACING BACKFILL AND AGAIN PRIOR TO PLACING ASPHALT
 2. THE 305 mm EITHER SIDE OF ORIGINAL TRENCH SHALL NOT BE REMOVED UNTIL BACKFILL HAS BEEN PLACED AND COMPACTED.
 3. ASPHALT SHALL COMPLY WITH STANDARD SPECIFICATIONS AS FOLLOWS: BM-2 - SURFACE COURSE
 4. ALL PIPES SHALL BE INSPECTED PRIOR TO BACKFILL. ALL PIPE COVERED PRIOR TO INSPECTION SHALL BE UNCOVERED AT THE CONTRACTORS EXPENSE.
 5. UNLESS OTHERWISE AUTHORIZED BY THE CITY ENGINEER TRENCH BACKFILL IN AREAS OF FUTURE STREET CONSTRUCTION, SHALL CONFORM TO THIS DETAIL. BACKFILL LIMITS FOR THIS DETAIL SHALL EXTEND TO THE TOP OF TRENCH AND TO 915 mm BACK OF ALL CURBS.
 6. ALL CONSTRUCTION AND MATERIALS SHALL CONFORM TO THE CITY OF WICHITA TECHNICAL SPECIFICATIONS
 7. ANY EXCAVATION LEFT OPEN OVERNIGHT ON ANY THOROUGHFARE OR COLLECTOR TYPE STREET SHALL BE SECURELY PLATED.
 8. NARROW TRENCH TO BE USED ONLY WITH THE APPROVAL OF THE CITY ENGINEER.
 9. IF THE STREET IS DAMAGED DURING CONSTRUCTION, THE CONTRACTOR SHALL MAKE REPAIRS IN ACCORDANCE WITH THE "STREET PATCH" DETAIL OF THE WICHITA TECHNICAL SPECIFICATIONS AND DESIGN CRITERIA.



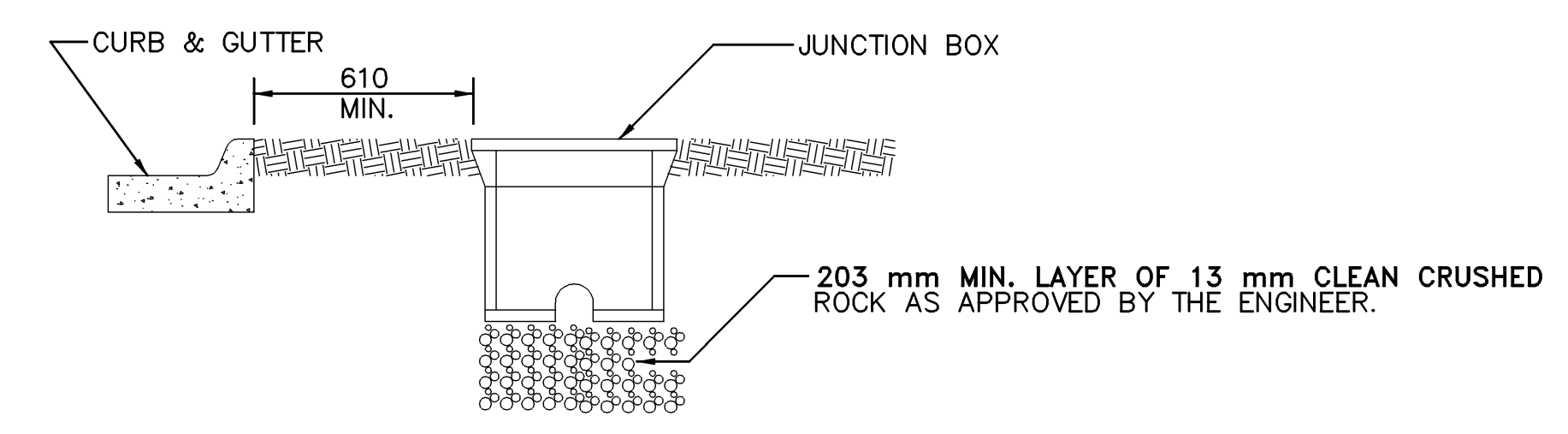
SECTION A - A
FIBERGLASS REINFORCED POLYMER CONCRETE SERVICE BOX
NOT TO SCALE

- NOTE:
1. SERVICE BOX MATERIAL TO BE AN AGGREGATE CONSISTING OF SAND AND GRAVEL BOUND TOGETHER WITH A POLYMER AND REINFORCED WITH A CONTINUOUS WOVEN GLASS STRANDS. THE MATERIAL MUST HAVE THE FOLLOWING MECHANICAL PROPERTIES:
 2. COMPRESSIVE STRENGTH - 7.734 kgm/sq m
TENSILE STRENGTH - 1.195 kgm/sq m
FLEXURAL STRENGTH - 5.273 kgm/sq m
 3. SERVICE BOX WITH ADJUSTABLE TOP RING MAY BE ACCEPTABLE UPON APPROVAL BY THE ENGINEER.

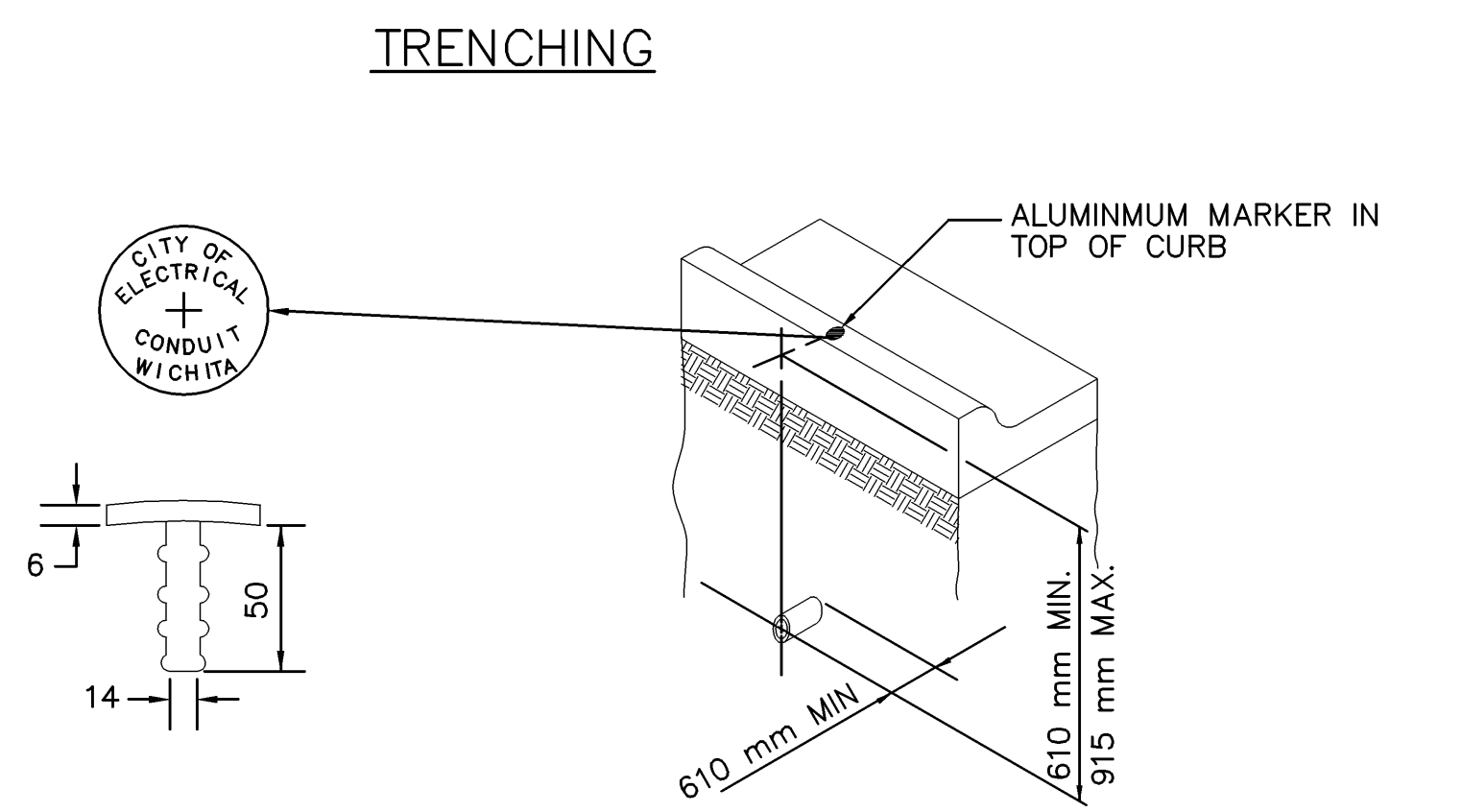


TYPE	DIMENSIONS (mm)									
	A	B	C	D	E	F	G	H	J	K
I	327	327	19	356	356	324	267	267	25	305
II	470	292	19	521	343	305	260	438	10	286

FIBERGLASS REINFORCED POLYMER CONCRETE JUNCTION BOX DETAILS
NOT TO SCALE



JUNCTION BOX INSTALLATION DETAIL



CONDUIT SHALL BE PLACED 610 mm TO 915 mm BELOW THE TOP OF CURB ELEVATION AND SHALL EXTEND 610 mm MINIMUM BEYOND THE BACK OF CURB. CONDUIT SHALL BE INSTALLED TO DRAIN, AND ALL ENDS SHALL BE THREADED AND CAPPED. AN ALUMINUM MARKER SHALL BE PLACED IN THE TOP OF THE CURB DIRECTLY OVER THE CONDUIT. ALUMINUM MARKERS WILL BE FURNISHED BY THE CONTRACTOR.

CONDUIT MARKING DETAIL

SUMMARY OF STREET LIGHTING QUANTITIES		
ITEM	UNIT	QUANTITY
GROUND MOUNTED LIGHT POLE (12.2 m-SINGLE ARM)	EACH	-
GROUND MOUNTED LIGHT POLE (12.2 m-DOUBLE ARM)	EACH	-
BARRIER MOUNTED LIGHT POLE (12.2 m-SIGNAL ARM)	EACH	-
BARRIER MOUNTED LIGHT POLE (12.2 m-DOUBLE ARM)	EACH	-
DECORATIVE LIGHT POLE (4.9 m-BARRIER MOUNTED)	EACH	-
CONCRETE FOUNDATION FOR LIGHT POLE	EACH	5
CONCRETE FOUNDATION FOR BARRIER MOUNTED LIGHT POLE	EACH	-
CONCRETE FOUNDATION FOR BARRIER MOUNTED LIGHT POLE OVER STORAGE BOX	EACH	-
TYPE R SCREW-IN FOUNDATION	EACH	-
TYPE T1 SCREW-IN FOUNDATION	EACH	-
TYPE T2 SCREW-IN FOUNDATION	EACH	-
TYPE F1 SCREW-IN FOUNDATION	EACH	-
TYPE F2 SCREW-IN FOUNDATION	EACH	-
COBRA HEAD LUMINAIRE (250 WATT, H.P.S.)	EACH	-
DECORATIVE TOP & LUMINAIRE HOUSING (150 WATT, H.P.S.)	EACH	-
**SEMI RECESSED UNDER BRIDGE DECK LIGHT (150 WATT)	EACH	-
TYPE I JUNCTION BOX	EACH	-
TYPE II JUNCTION BOX	EACH	-
SERVICE BOX	EACH	-
CONTROL CENTER - POLE MOUNTED	EACH	-
CONTROL CENTER - PAD MOUNTED	EACH	-
CONTROL CENTER FOUNDATION	EACH	-
CONTROL CENTER GROUND ROD	EACH	-
PHOTO CELL (DELAY TYPE)	EACH	-
RELOCATE EXISTING CONTROL CENTER	EACH	-
50 mm HOUSING CONDUIT (PVC OR HDPE SCH. 40)	METER	190 m
75 mm HOUSING CONDUIT (PVC OR HDPE SCH. 40)	METER	-
100 mm HOUSING CONDUIT (PVC OR HDPE SCH. 40)	METER	-
150 mm HOUSING CONDUIT (PVC OR HDPE SCH. 40)	METER	-
1c No. 4 TYPE USE DISTRIBUTION CABLE	METER	-
1c No. 6 TYPE USE DISTRIBUTION CABLE	METER	-
1c No. 8 TYPE USE DISTRIBUTION CABLE	METER	-
1c No. 10 TYPE THHN POLE & BRACKET CABLE	METER	-
CONNECTOR KIT, FUSED	EACH	-
CONNECTOR KIT, UNFUSED	EACH	-
FARGO CONNECTORS	EACH	-
CONDUIT MARKERS	EACH	-
COMMUNICATION DUCT (75 mm HDDE)	METER	-
FIBER OPTIC SERVICE BOX	EACH	-

* THESE APPROXIMATE QUANTITIES WERE PREPARED SOLELY FOR THE CONTRACTOR'S CONVENIENCE AND ARE NOT GUARANTEED TO BE A COMPLETE LIST OF MATERIALS FOR THIS PROJECT.
HOUSING CONDUIT QUANTITIES BASED ON PLAN DIMENSIONS. BENDS, FITTINGS AND RISERS ARE SUBSIDIARY

DATE	BY	REFERENCE NOTED	REFERENCE CHECKED

Drawn by: Plotfile: SCALE