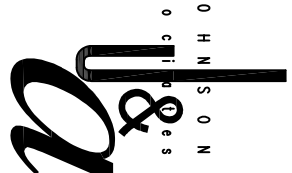


Gossell Livingston
 Architecture
 Wichita, KS 67202
 Tel: (316) 265-4367
 Fax: (316) 265-5646
 Email: gossell@gl.com

© 2016 Gossell Livingston Associates, Inc.
 The drawing and all information herein is the exclusive property of Gossell Livingston Associates, Inc. and is not to be copied or used in any way without the express written consent of Gossell Livingston Associates, Inc. All contents, the original and any reproductions, shall remain the property of Gossell Livingston Associates, Inc.



Johnson & Associates, Inc.
 100 E. California Ave. - Third Floor
 Oklahoma City, OK 73104
 (405) 235-8073 744 (405) 235-8078
 Certificate of Authorization RE-1728 EXP. DATE: 12/31/2016

WICHITA WATERWALK

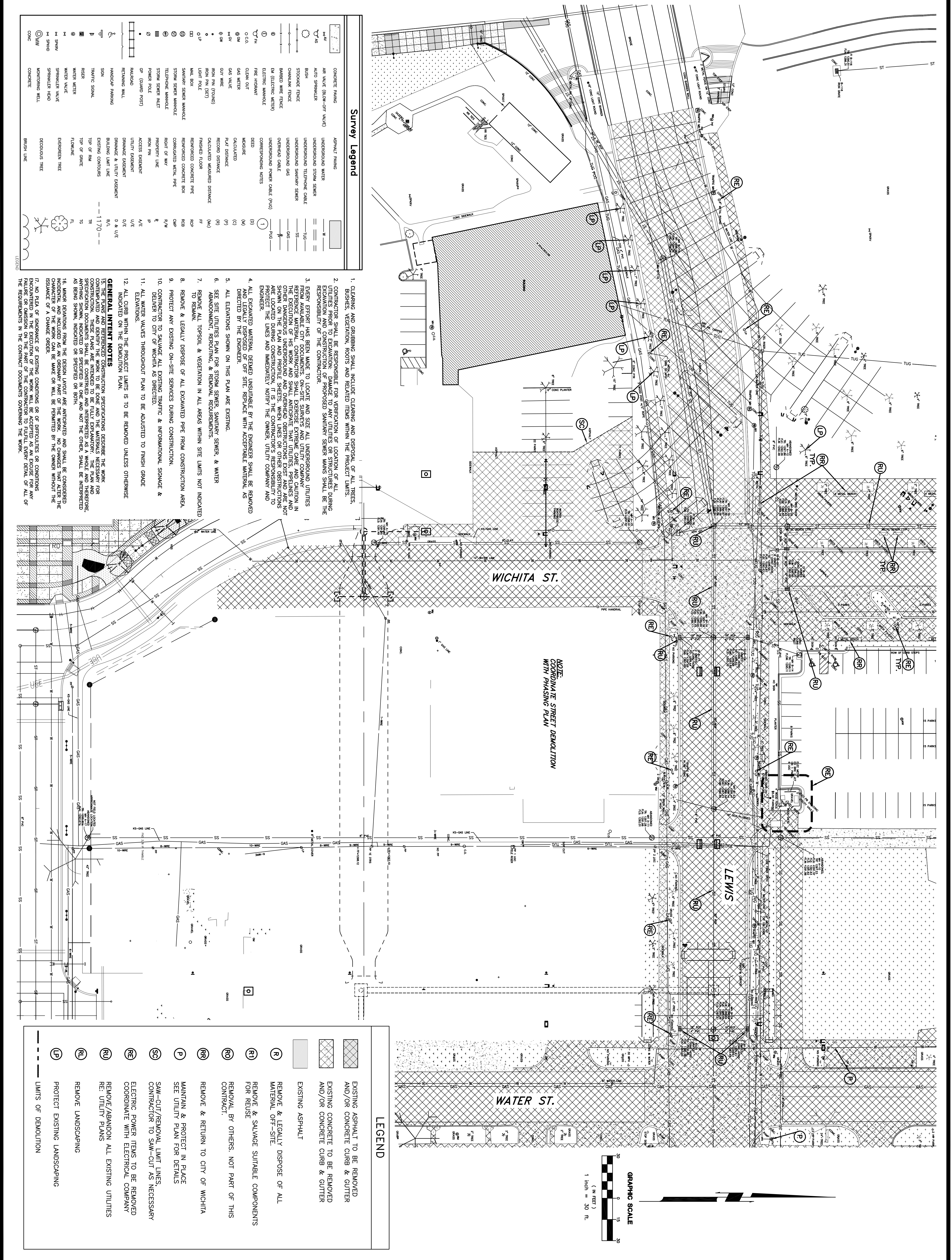
PUBLIC IMPROVEMENTS PHASE 2 PACKAGE 2

No.	Date	Description
05-30-08		BID SET
04-27-08		FIELD CHECK

DEMOLITION PLAN SOUTHWEST QUADRANT

Job No.	D1.4
Date	05-30-06
Drawn	IN
Checked	PB
Scale	16' of 96'

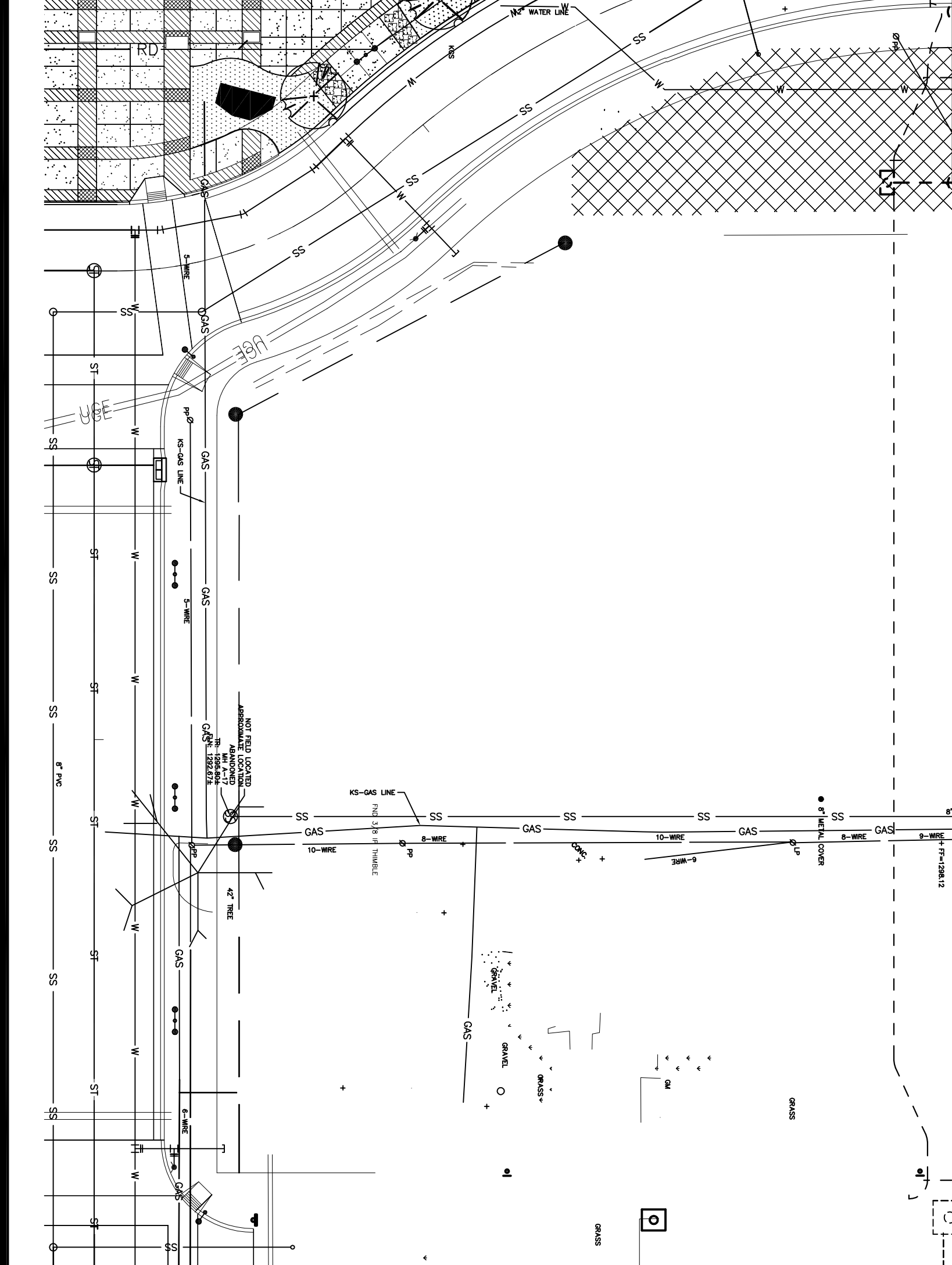
Auto File: W:\215\2215 Ph 2\2215012 Ph 2 Streets\2215012-DEMO.dwg, 5/27/2006 1:52 PM, Peter Borelli
 XREFS LOADED:



Survey Legend

CONCRETE FINISH	ASPHALT FINISH
AIR VALVE (BLOW-OFF VALVE)	UNDERGROUND WATER
AUTO SPRINKLER	UNDERGROUND STORM SEWER
BUSH	UNDERGROUND TELEPHONE CABLE
STOCKPILE FENCE	UNDERGROUND SANITARY SEWER
CHAINLINK FENCE	UNDERGROUND GAS
BARBED WIRE FENCE	OVERHEAD CABLE
EM (ELECTRIC METERS)	UNDERGROUND POWER CABLE (R/S)
① ELECTRIC WAREHOUSE	CONCRETE NOTES
② FIRE HOBART	①
③ CLEAN OUT	MEASURE
④ GAS METERS	② (W)
⑤ GAS VALVE	③ (V)
⑥ HOT WIRE	④ (P)
⑦ NON PAH (ROUND)	⑤ (R)
⑧ LIGHT POLE	⑥ (W)
⑨ WALL BOX	⑦ (M)
⑩ SANITARY SEWER MANHOLE	⑧ (R)
⑪ STORM SEWER MANHOLE	⑨ (M)
⑫ TELEPHONE MANHOLE	⑩ (R)
⑬ STORM SEWER HOLE	⑪ (M)
⑭ POWER POLE	⑫ (R)
⑮ 6" (ROUND POST)	⑬ (M)
⑯ REMAINING WALL	⑭ (R)
⑰ BALDADO	⑮ (M)
⑱ TRAFFIC SIGNAL	⑯ (R)
⑲ SIGN	⑰ (M)
⑳ WATER VALVE	⑱ (R)
㉑ SPRINKLER HEAD	㉑ (M)
㉒ MONITORING WELL	㉒ (R)
㉓ CONCRETE	㉓ (M)
㉔ BRUSH LINE	㉔ (R)

- CLEANING AND GRUBBING SHALL INCLUDE CLEANING AND DISPOSAL OF ALL TREES, BUSHES, VEGETATION, ROOTS AND RELATED ITEMS WITHIN THE PROJECT LIMITS.
- UTILITIES PRIOR TO EXCAVATION: DAMAGE TO ANY UTILITIES OR STRUCTURES DURING EXCAVATION AND CONSTRUCTION OF PROPOSED SANITARY SEWER MAINS SHALL BE THE RESPONSIBILITY OF THE CONTRACTOR.
- EVERY EFFORT HAS BEEN MADE TO LOCATE AND SIZE ALL UNDERGROUND UTILITIES. CONTRACTOR SHALL VERIFY THE LOCATION AND DEPTH OF ALL UTILITIES USING THE REFERENCED MATERIAL. CONTRACTOR SHALL EXERCISE EXTREME CARE AND CAUTION IN THE EXECUTION OF HIS WORK AND SHALL ANTICIPATE THAT UTILITIES, PRELINES AND OTHER UNDERGROUND AND ABOVEGROUND SERVICES EXIST. CONTRACTOR SHALL BE RESPONSIBLE FOR VERIFYING THE LOCATION AND DEPTH OF ALL UTILITIES. CONTRACTOR SHALL BE RESPONSIBLE TO PROTECT THE LINES AND IMMEDIATELY NOTIFY THE OWNER, UTILITY COMPANY AND ENGINEER.
- ALL EXCAVATED MATERIAL DEEMED UNSUITABLE BY THE ENGINEER SHALL BE REMOVED AND LEGALLY DISPOSED OF OFF-SITE. REPLACE WITH ACCEPTABLE MATERIAL AS DIRECTED BY THE ENGINEER.
- ALL ELEVATIONS SHOWN ON THIS PLAN ARE EXISTING.
- SEE SITE UTILITIES PLAN FOR STORM SEWER, SANITARY SEWER, & WATER ABANDONMENT, REROUTING, & REMOVAL REQUIREMENTS.
- REMOVE ALL TOPSOIL & VEGETATION IN ALL AREAS WITHIN SITE LIMITS NOT INDICATED TO REMAIN.
- REMOVE & LEGALLY DISPOSE OF ALL EXCAVATED PIPE FROM CONSTRUCTION AREA.
- PROTECT ANY EXISTING ON-SITE SERVICES DURING CONSTRUCTION.
- CONTRACTOR TO SALVAGE ALL EXISTING TRAFFIC & INFORMATIONAL SIGNAGE & DELIVER TO CITY OF WICHITA AS DIRECTED.
- ALL WATER VALVES THROUGHOUT PLAN TO BE ADJUSTED TO FINISH GRADE ELEVATIONS.
- ALL CURBS WITHIN THE PROJECT LIMITS IS TO BE REMOVED UNLESS OTHERWISE INDICATED ON THE DEMOLITION PLAN.



LEGEND

	EXISTING ASPHALT TO BE REMOVED AND/OR CONCRETE CURB & GUTTER
	EXISTING CONCRETE TO BE REMOVED AND/OR CONCRETE CURB & GUTTER
	EXISTING ASPHALT
	REMOVE & LEGALLY DISPOSE OF ALL MATERIAL OFF-SITE
	REMOVE & SALVAGE SUITABLE COMPONENTS FOR REUSE
	REMOVAL BY OTHERS, NOT PART OF THIS CONTRACT.
	REMOVE & RETURN TO CITY OF WICHITA
	MAINTAIN & PROTECT IN PLACE SEE UTILITY PLAN FOR DETAILS
	SAW-CUT/REMOVAL LIMIT LINES CONTRACTOR TO SAW-CUT AS NECESSARY
	ELECTRIC POWER TENS TO BE REMOVED COORDINATE WITH ELECTRICAL COMPANY
	REMOVE/ABANDON ALL EXISTING UTILITIES RE: UTILITY PLANS
	REMOVE LANDSCAPING
	PROTECT EXISTING LANDSCAPING
	LIMITS OF DEMOLITION



NOTE: COORDINATE STREET DEMOLITION WITH PHASING PLAN