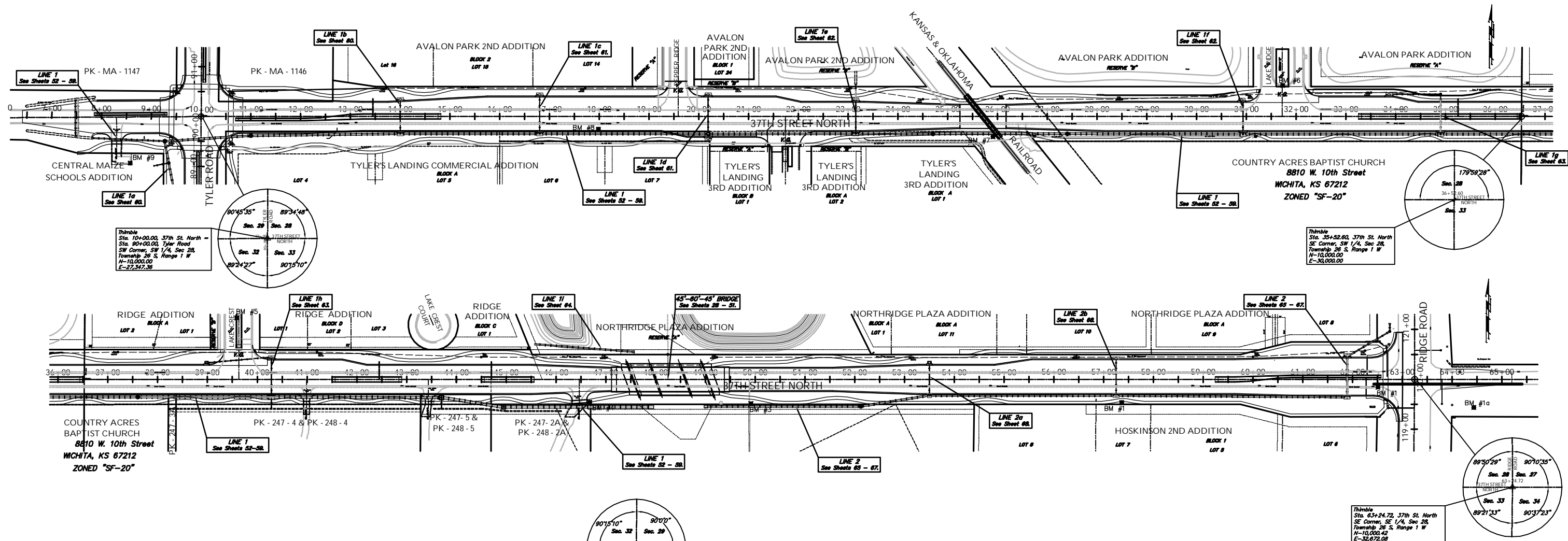


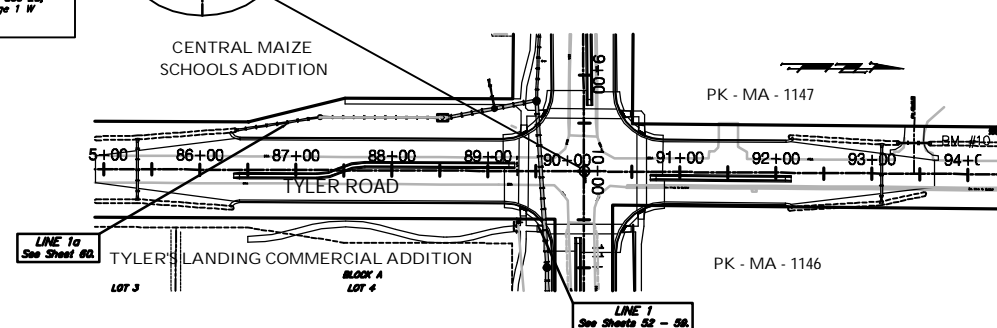
37th STREET NORTH

STREET & SWS IMPROVEMENTS



TYLER ROAD

STREET & SWS IMPROVEMENTS



BENCHMARKS:

- | | | | |
|--|---|--|--|
| <p>BM #1 - "I" Cut on the South Hub Guard of RCBC Located 73' West of the Centerline of Ridge Road on 37th Street North
Sta. 62+51, 15' Rt.
Elev. = 1331.52 MSL</p> <p>BM #1a - Railroad Spike in the North Face of the Second Power Pole East of Ridge Road on the South Side of 37th Street North
Sta. 64+43, 59' Rt.
Elev. = 1330.54 MSL</p> <p>BM #2 - Railroad Spike in the North Face of the Third Power Pole West of Ridge Road on the South Side of 37th Street North
Sta. 57+38, 46' Rt.
Elev. = 1333.43 MSL</p> | <p>BM #3 - "I" Cut in the Concrete Footing of a Steel Fence Corner Post South of 37th Street North
Sta. 49+01, 46' Rt.
Elev. = 1328.25 MSL</p> <p>BM #4 - Railroad Spike in the North Face of the First Power/Light Pole West of Bridge on the South Side of 37th Street North
Sta. 49+07, 47' Rt.
Elev. = 1331.57 MSL</p> <p>BM #5 - "I" Cut in the Top of Curb on the North End of the West Curb on the Median at the Intersection of Lakeside and 37th Street North.
Sta. 39+59, 124' Lt.
Elev. = 1335.60 MSL</p> | <p>BM #6 - "I" Cut in the Top of Curb on the South End of the Median at the Intersection of Lakeside and 37th Street North.
Sta. 31+72, 178' Lt.
Elev. = 1335.65 MSL</p> <p>BM #7 - "C" on the West End of the Steel Casing Pipe at the Railroad Crossing South of 37th Street North
Sta. 25+90, 41' Rt.
Elev. = 1336.58 MSL</p> <p>BM #8 - Steel T-Post Driven 4' Deep
Sta. 18+00, 25' Rt.
Elev. = 1337.73 MSL</p> | <p>BM #9 - "I" in the Concrete Footing of the SBC Pedestal in the South West Corner of 37th Street North and Tyler Road
Sta. 8+56, 95' Rt.
Elev. = 1342.17 MSL</p> <p>BM #10 - Railroad Spike in the East Face of the 2nd Power Pole North of 37th Street and West of Tyler Road
Sta. 94+24, 46' Lt.
Elev. = 1342.85 MSL</p> |
|--|---|--|--|

Drawing File: F:\37th Pave\37th Land\dwg\37th Base.dwg (Keysheet)
 Design: TPV
 Date: TPV
 Approvers: TPV
 Project No. 04.01.E791 CAPITAL IMPROVEMENT PROJECT
KEYSHEET
 37TH STREET NORTH - TYLER ROAD TO RIDGE ROAD
 Scale: 1" = 100'

September 2006

2 OF 146

Baughman Company, P.A.
 315 Ella St. Wichita, KS 67211 P 316-262-7271 F 316-262-0149
 ENGINEERING | SURVEYING | PLANNING | LANDSCAPE ARCHITECTURE