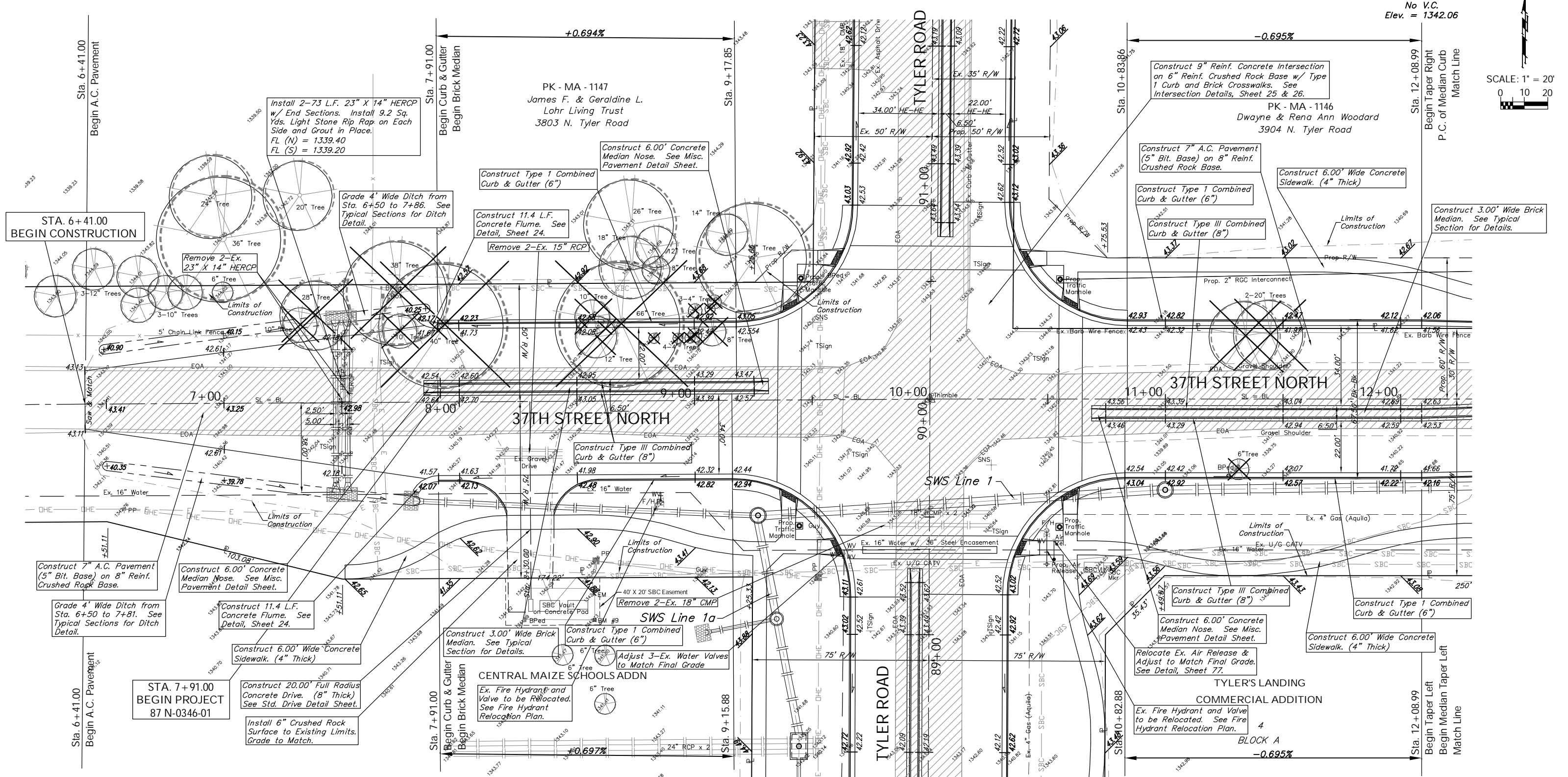
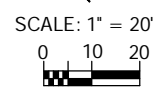


BENCHMARK:
 BM #9 - "I" in the South East Corner of the Concrete SBC Pad in the South West Corner of 37th Street North and Tyler Road
 Sta. 8+56, 95' Rt.
 Elev. = 1342.17 MSL



P.V.I.
 No V.C.
 Elev. = 1342.06



STA. 6+41.00
 BEGIN CONSTRUCTION

STA. 7+91.00
 BEGIN PROJECT
 87 N-0346-01

Note:
 Pavement, Sidewalks, and Etc. To Be Removed Are Indicated By:

Note:
 Trees/Shrubs to be removed are marked thus:

Drawing File: F:\37th Pave\37th Land\dwg\37th Base.dwg (P01)
 Design: TPV
 Date: TPV
 Approved: TPV
 Project No. 0401E791 CAPITAL IMPROVEMENT PROJECT
 37TH STREET NORTH PAVING
 Sta. 6+41.00 to Sta. 12+08.99
 37TH STREET NORTH - TYLER ROAD TO TYLER ROAD

Baughman Company, P.A.
 315 Ellis St. Wichita, KS 67211 P 316-262-7271 F 316-262-0149
 ENGINEERING | SURVEYING | PLANNING | LANDSCAPE ARCHITECTURE