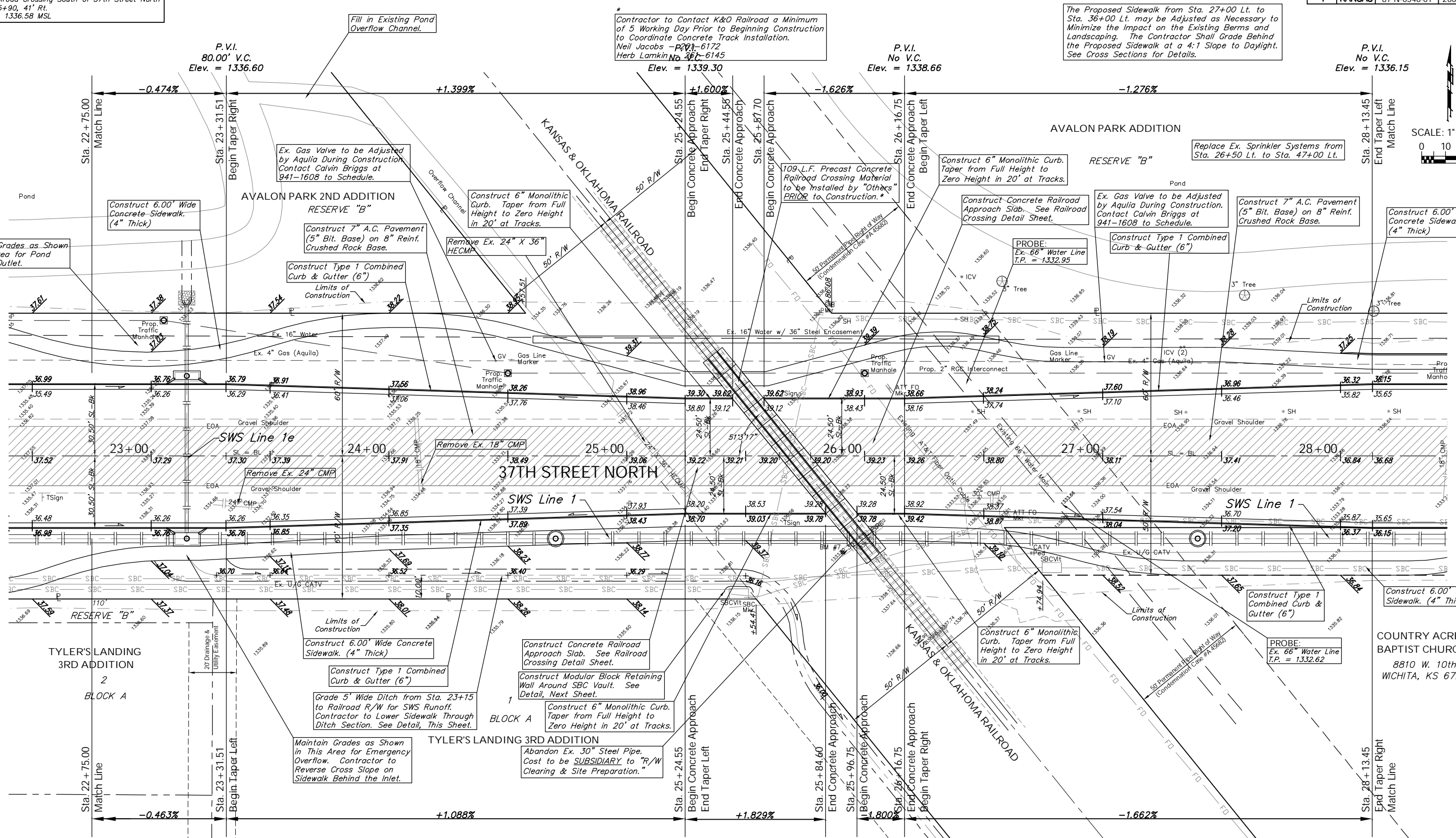
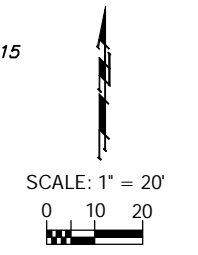


FHWA NO.	STATE	PROJECT NO.	FISCAL YEAR	SHEET NO.	TOTAL SHEETS
7	KANSAS	87 N-0346-01	2006	15	

**BENCHMARK:**  
 BM #7 - "X" on the West End of the Steel Casing Pipe at the Railroad Crossing South of 37th Street North  
 Sta. 25+90, 41' Rt.  
 Elev. = 1336.58 MSL

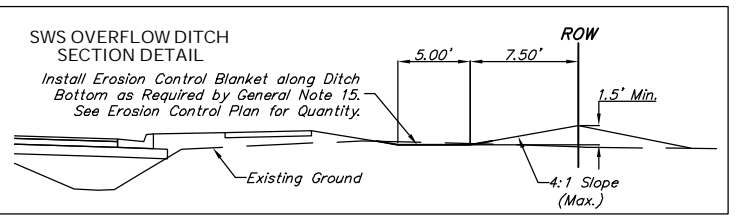
The Proposed Sidewalk from Sta. 27+00 Lt. to Sta. 36+00 Lt. may be Adjusted as Necessary to Minimize the Impact on the Existing Berms and Landscaping. The Contractor Shall Grade Behind the Proposed Sidewalk at a 4:1 Slope to Daylight. See Cross Sections for Details.

Contractor to Contact K&O Railroad a Minimum of 5 Working Day Prior to Beginning Construction to Coordinate Concrete Track Installation.  
 Neil Jacobs - 291-6172  
 Herb Lamkin - 461-6145



Maintain Grades as Shown in This Area for Pond Overflow Outlet.

The 5' Wide Ditch Shall be Graded to Approximately 200' South of the South R/W of 37th Street North and then Grade to Drain to the Railroad R/W. The Cost of this Grading Shall Not be Paid for Directly, but Shall be Considered **SUBSIDIARY** to the Project.



**Note:**  
 Pavement, Sidewalks, and Etc. To Be Removed Are Indicated By:

Drawing File: F:\37th Pave\37th Land\dwg\37th Base.dwg (P04)  
 Design: TPV  
 Date: TPV  
 Approved: TPV  
 Project No. 0401E791 CAPITAL IMPROVEMENT PROJECT  
**37TH STREET NORTH PAVING**  
 Sta. 22+75.00 to Sta. 28+13.45  
 37TH STREET NORTH - TYLER ROAD TO RIDGE ROAD

**Baughman Company, P.A.**  
 315 Ella St. Wichita, KS 67211 P 316-262-7271 F 316-262-0149  
 ENGINEERING | SURVEYING | PLANNING | LANDSCAPE ARCHITECTURE

15 OF 146

COUNTRY ACRES BAPTIST CHURCH  
 8810 W. 10th Street  
 WICHITA, KS 67212

TYLER'S LANDING 3RD ADDITION  
 BLOCK A

TYLER'S LANDING 3RD ADDITION  
 BLOCK A

P.V.I.  
 80.00' V.C.  
 Elev. = 1336.60

P.V.I.  
 No V.C.  
 Elev. = 1338.70

P.V.I.  
 No V.C.  
 Elev. = 1339.42

P.V.I.  
 No V.C.  
 Elev. = 1336.15