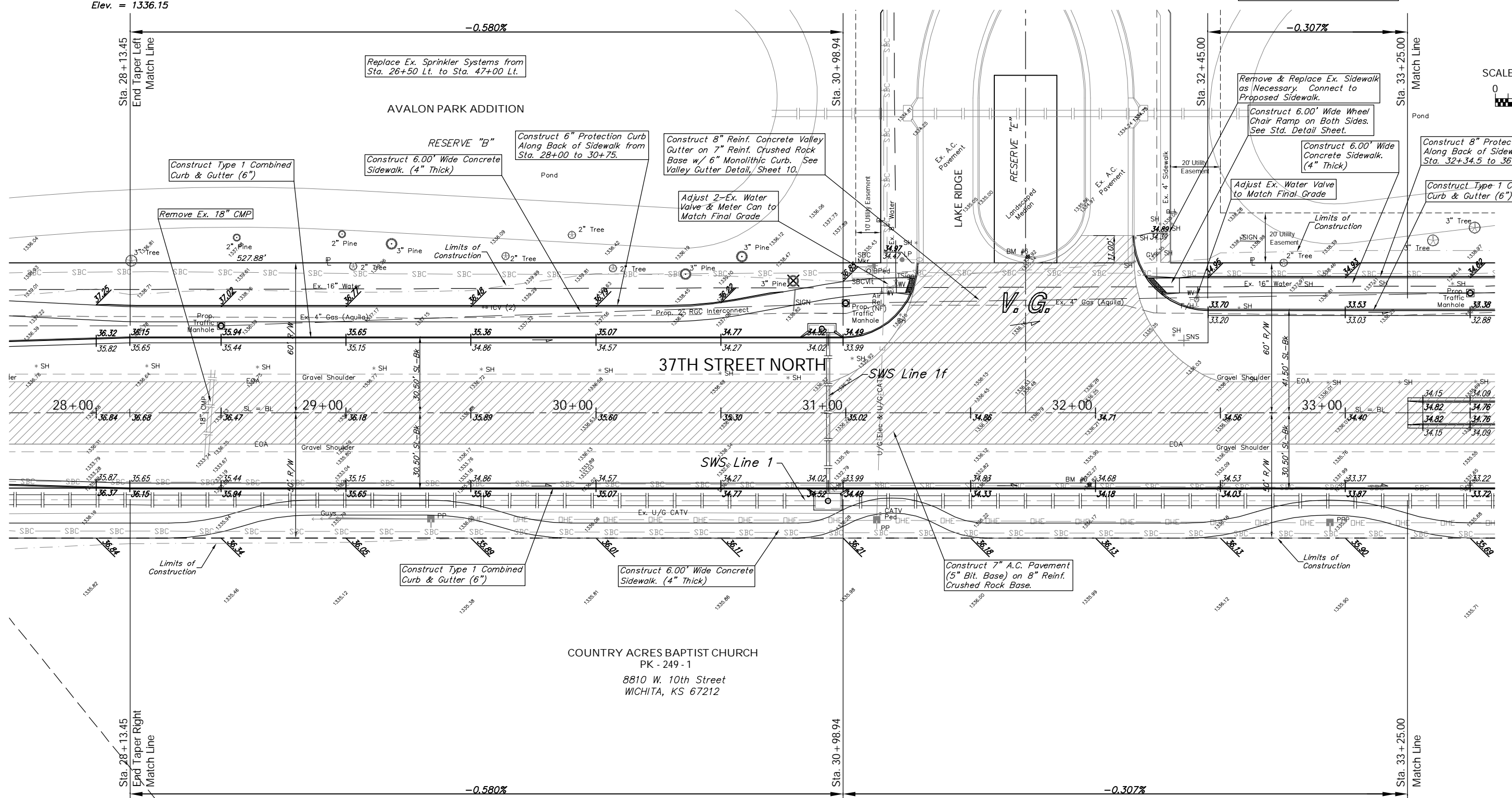
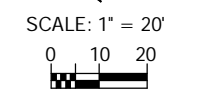


BENCHMARK:  
 BM #6 - "Cut in the Top of Curb on the South End of the Median at the Intersection of Lakeridge and 37th Street North.  
 Sta. 31+72, 178' Lt.  
 Elev. = 1335.85 MSL

The Contractor Shall be Responsible for Reshaping the Existing Berms Adjacent to the Avalon Park Addition Upon Completion of the Project. The Field Engineer Shall Have the Final Approval of the Reshaped Berms. Cost to be SUBSIDIARY to the Lump Sum Bid Item "Site Restoration".

The Proposed Sidewalk from Sta. 27+00 Lt. to Sta. 36+00 Lt. may be Adjusted as Necessary to Minimize the Impact on the Existing Berms and Landscaping. The Contractor Shall Grade Behind the Proposed Sidewalk at a 4:1 Slope to Daylight. See Cross Sections for Details.

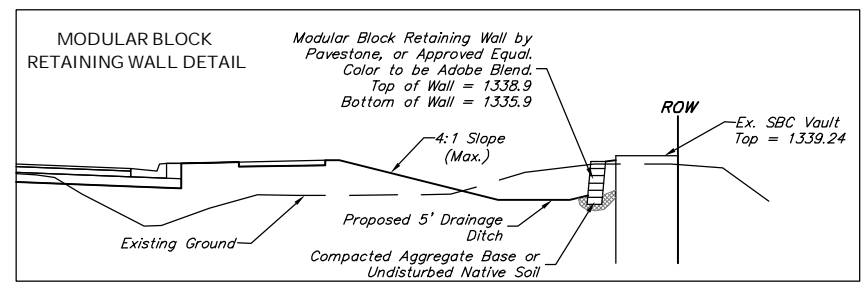
Replace Ex. Sprinkler Systems from Sta. 26+50 Lt. to Sta. 47+00 Lt.



P.V.I.  
 No V.C.  
 Elev. = 1336.15

P.V.I.  
 No V.C.  
 Elev. = 1336.15

P.V.I.  
 No V.C.  
 Elev. = 1334.49



Note:  
 Pavement, Sidewalks, and Etc. To Be Removed Are Indicated By:

Drawing File: F:\37th Pave\37th Land\dwg\37th Base.dwg (P05)  
 Design: TPV  
 Date: TPV  
 Approved: TPV  
 Project No. 04-01-E791 CAPITAL IMPROVEMENT PROJECT  
**37TH STREET NORTH PAVING**  
 Sta. 28+13.45 to Sta. 33+25.00  
 37TH STREET NORTH - TYLER ROAD to RIDGE ROAD