

FHWA NO.	STATE	PROJECT NO.	FISCAL YEAR	SHEET NO.	TOTAL SHEETS
7	KANSAS	87 N-0346-01	2006	17	146

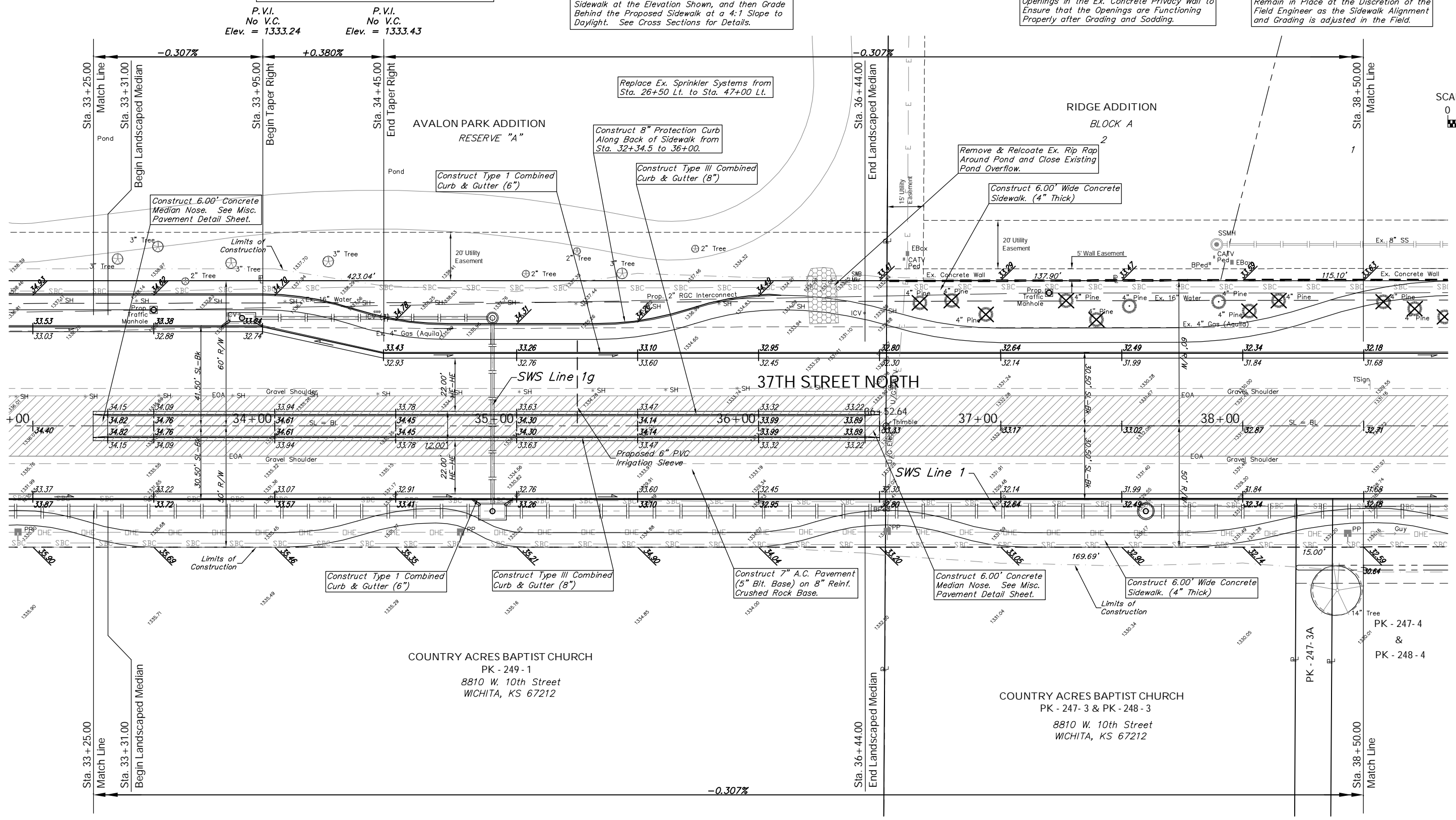
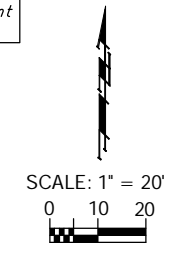
BENCHMARK:
 BM #5 - Cut in the Top of Curb on the North End of the West Curb on the Median at the Intersection of Lakecrest and 37th Street North. Sta. 39+59, 124' Lt. Elev. = 1335.60 MSL

The Contractor Shall be Responsible for Reshaping the Existing Berms Adjacent to the Avalon Park Addition Upon Completion of the Project. The Field Engineer Shall Have the Final Approval of the Reshaped Berms. Cost to be SUBSIDIARY to the Lump Sum Bid Item "Site Restoration".

The Proposed Sidewalk from Sta. 27+00 Lt. to Sta. 36+00 Lt. may be Adjusted as Necessary to Minimize the Impact on the Existing Berms and Landscaping. The Contractor Shall Construct the Sidewalk at the Elevation Shown, and then Grade Behind the Proposed Sidewalk at a 4:1 Slope to Daylight. See Cross Sections for Details.

The Contractor Shall Maintain the Drainage Openings in the Ex. Concrete Privacy Wall to Ensure that the Openings are Functioning Properly after Grading and Sodding.

The Ex. 4" Evergreen Trees Shown for Removal Adjacent to Ridge Addition may Remain in Place at the Discretion of the Field Engineer as the Sidewalk Alignment and Grading is adjusted in the Field.



Note:
 Pavement, Sidewalks, and Etc. To Be Removed Are Indicated By:

Drawing File: F:\37th Pave\37th Land\dwg\37th Base.dwg (P06)
 Design: TPV
 Drawn: TPV
 Approved: TPV
 Project No. 04-01-E791 CAPITAL IMPROVEMENT PROJECT
37TH STREET NORTH PAVING
 Sta. 33+25.00 to Sta. 38+50.00
 37TH STREET NORTH - TYLER ROAD TO RIDGE ROAD

Baughman Company, P.A.
 315 Ellis St. Wichita, KS 67211 P 316-262-7271 F 316-262-0149
 ENGINEERING | SURVEYING | PLANNING | LANDSCAPE ARCHITECTURE