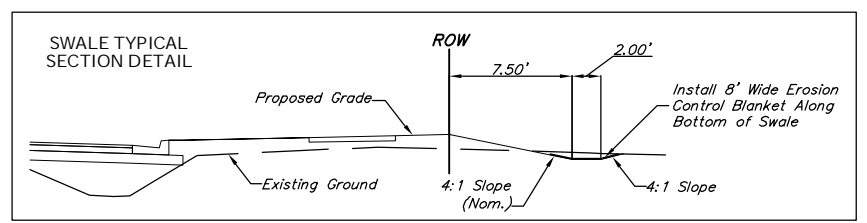
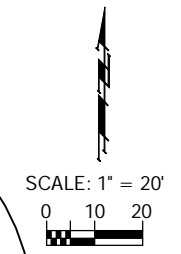
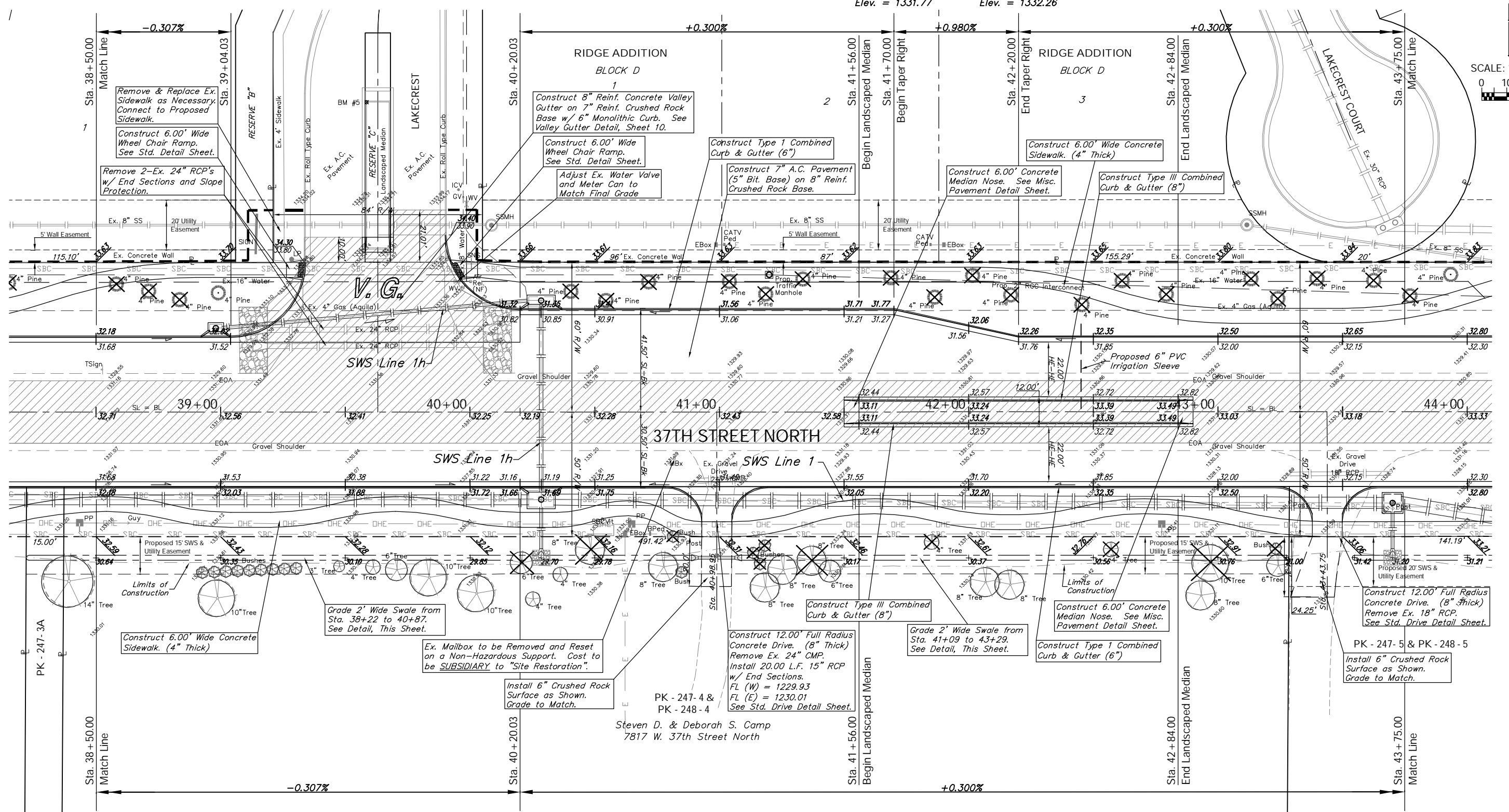


BENCHMARK:  
 BM #5 - 1" Cut in the Top of Curb on the North End of the West Curb on the Median at the Intersection of Lakecrest and 37th Street North.  
 Sta. 39+59, 124' Lt.  
 Elev. = 1335.60 MSL

The Contractor Shall Maintain the Drainage Openings in the Ex. Concrete Privacy Wall to Ensure that the Openings are Functioning Properly after Grading and Sodding.

Replace Ex. Sprinkler Systems from Sta. 26+50 Lt. to Sta. 47+00 Lt.

The Ex. 4" Evergreen Trees Shown for Removal Adjacent to Ridge Addition may remain in place at the Discretion of the Field Engineer as the Sidewalk Alignment and Grading is adjusted in the Field.



P.V.I. No V.C. Elev. = 1331.66

Note:  
 Trees/Shrubs to be removed are marked thus:

Note:  
 Pavement, Sidewalks, and Etc. To Be Removed Are Indicated By:

Drawing File: F:\37th Pave\37th Land\dwg\37th Base.dwg (Pw07)  
 Project No. 04-01-E791 CAPITAL IMPROVEMENT PROJECT  
**37TH STREET NORTH PAVING**  
 Sta. 38+50.00 to Sta. 43+75.00  
 37TH STREET NORTH - TYLER ROAD TO RIDGE ROAD

**Baughman** Baughman Company, P.A.  
 315 Ellis St. Wichita, KS 67211 P 316-262-7271 F 316-262-0149  
 ENGINEERING | SURVEYING | PLANNING | LANDSCAPE ARCHITECTURE