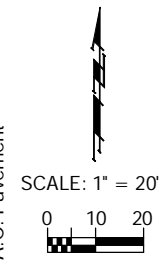
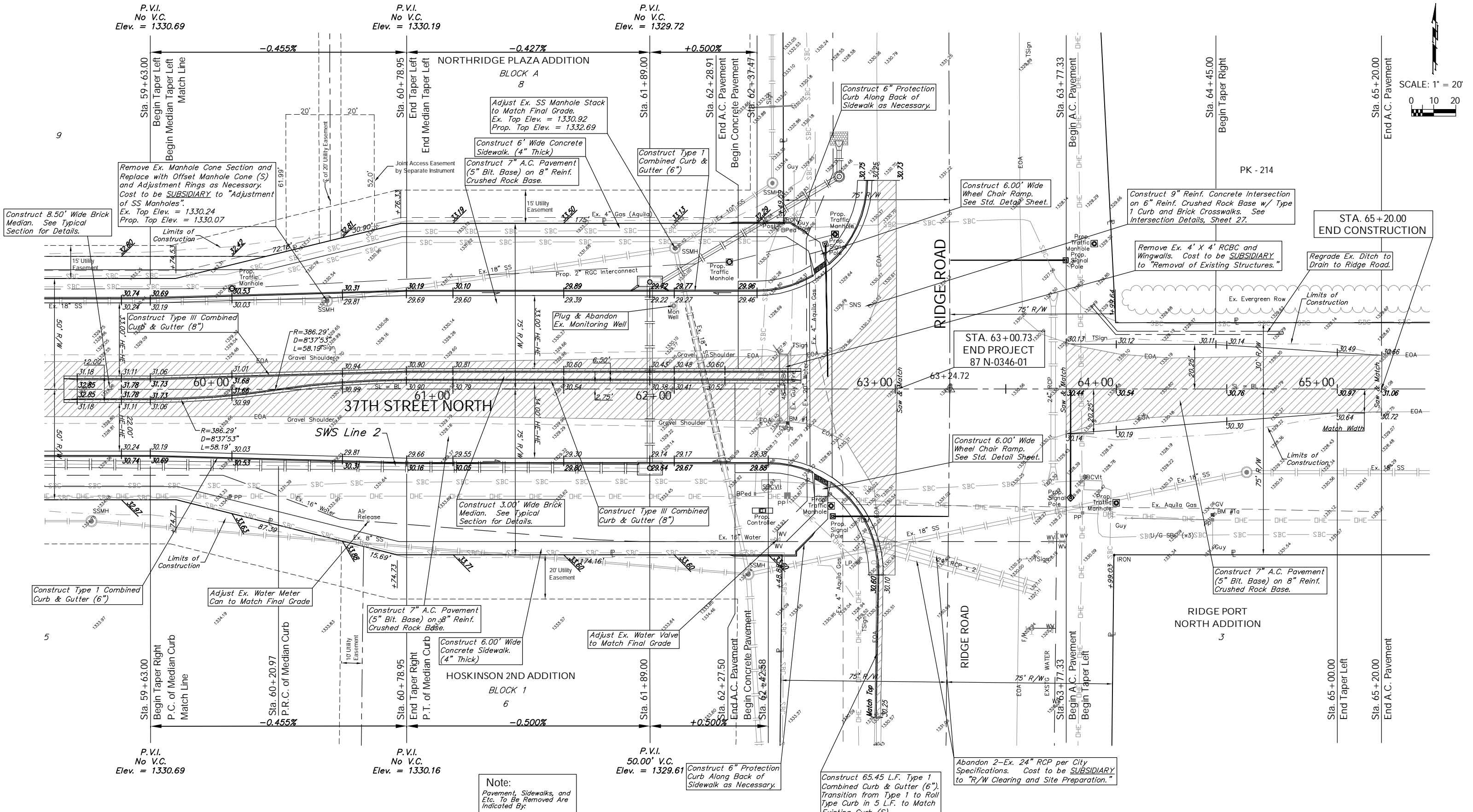


FHWA NO.	STATE	PROJECT NO.	FISCAL YEAR	SHEET NO.	TOTAL SHEETS
7	KANSAS	87 N-0346-01	2006	22	146

BENCHMARK:
 BM #1a - Railroad Spike in the North Face of the Second Power Pole East of Ridge Road on the South Side of 37th Street North
 Sta. 64+43, 59' Rt.
 Elev. = 1330.54 MSL



Note:
 Pavement, Sidewalks, and Etc. To Be Removed Are Indicated By:

Drawing File: F:\37th Pave\37th Land\dwg\37th Base.dwg (Pav11)

Design: TPV
 Drawn: TPV
 Approved: TPV

Project No. 0401E791 CAPITAL IMPROVEMENT PROJECT
37TH STREET NORTH PAVING
 Sta. 59+63.00 to End
 37TH STREET NORTH - TYLER ROAD TO RIDGE ROAD

Baughman Company, P.A.
 315 Ellis St. Wichita, KS 67211 P 316-262-7271 F 316-262-0149
 ENGINEERING | SURVEYING | PLANNING | LANDSCAPE ARCHITECTURE

September 2006
 SHEET
22
 OF
 146