

Construct 4.00' Wide 9" Reinforced Concrete Apron on 6" Reinforced Crushed Rock Base Behind Curb Return. (Typical on Both Returns.) See Detail, Sheet 25.

Install 6" X 12" W4-W4 Wire Welded Fabric

Install #4 Bar 24" Long at 30" on Center

37TH STREET NORTH

Construct 3.00' Brick Paver Median with 8" Median Curb and 6.00' Concrete Median Nose.

Construct 9" Reinforced Concrete Pavement on 6" Reinforced Crushed Rock Base

Construct 10.00' Wide Brick Paver Crosswalk. See Misc. Pavement Detail Sheet.

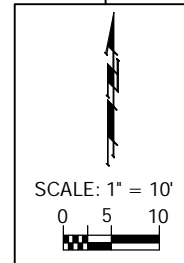
R50.00' (FC)

Transition from Zero Height to Full Height Curb in 5 L.F.

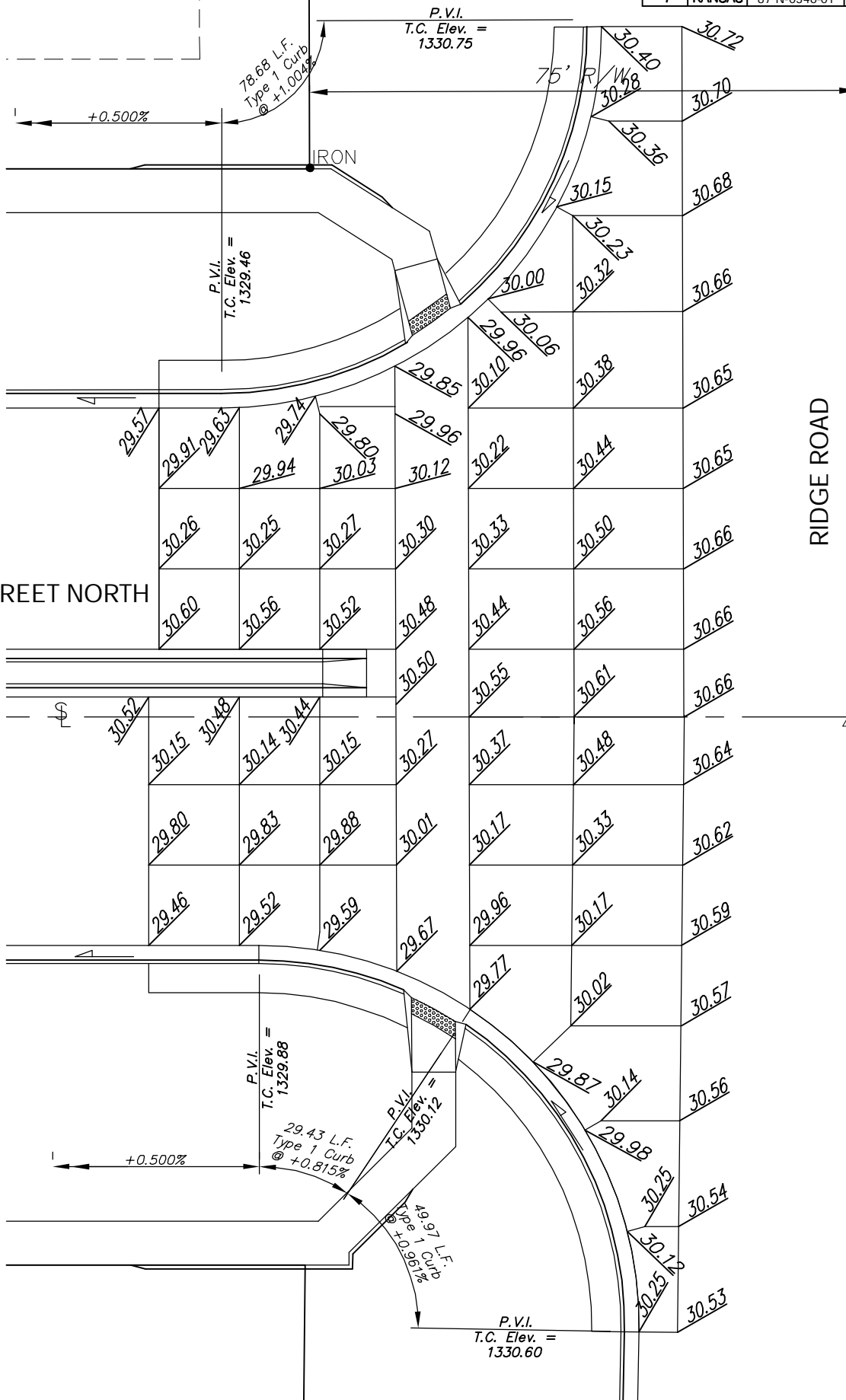
RIDGE ROAD

Saw to Neat Line, Remove, and Match Ex. Asphalt Pavement

Construct 9" Reinforced Concrete Pavement on 6" Reinforced Crushed Rock Base



37TH STREET NORTH



Drawing File: F:\37th Pave\37th Land\dwg\37th Base.dwg (Intersection Ridge)

Design: TPV
Drawn: TPV
Approved: TPV
NOTED

Project No. 04-01-E791 CAPITAL IMPROVEMENT PROJECT
37TH STREET NORTH AND RIDGE ROAD
INTERSECTION JOINT & GRADING PLAN
37TH STREET NORTH - TYLER ROAD TO RIDGE ROAD

B Baughman Company, P.A.
315 Ellis St. Wichita, KS 67211 P 316-262-7271 F 316-262-0149
ENGINEERING | SURVEYING | PLANNING | LANDSCAPE ARCHITECTURE

September 2006
SHEET 27 OF 146