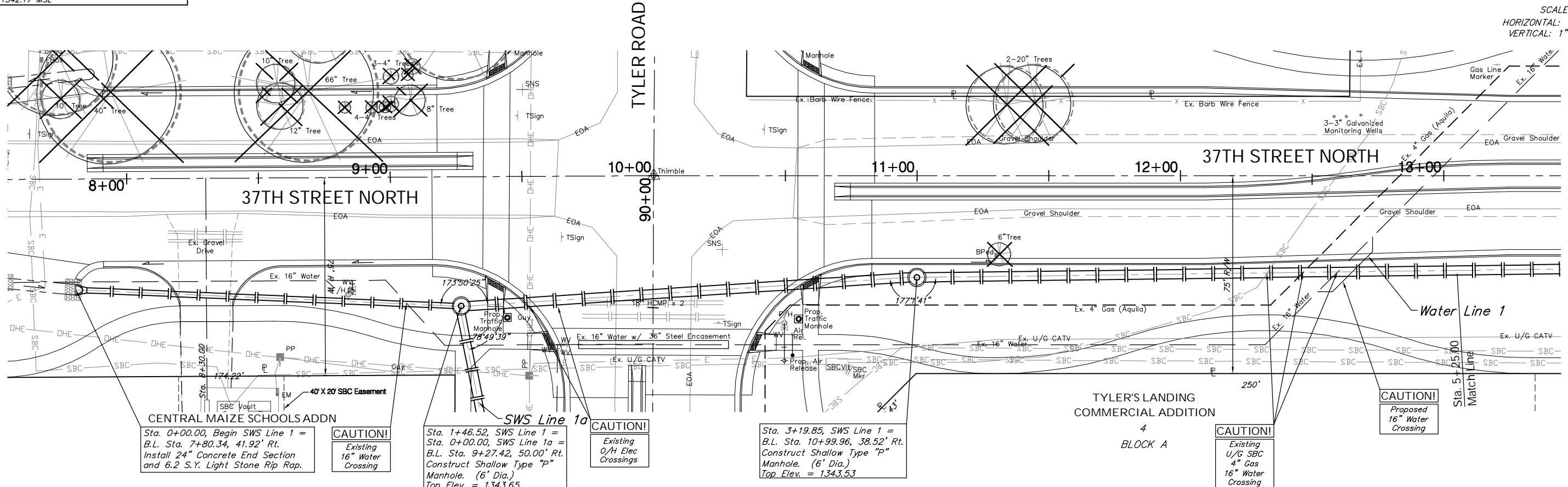


| FHWA NO. | STATE | PROJECT NO. | FISCAL YEAR | SHEET NO. | TOTAL SHEETS |
|----------|--------|--------------|-------------|-----------|--------------|
| 7 | KANSAS | 87 N-0346-01 | 2006 | 53 | 146 |

BENCHMARK:
 BM #9 - "I" in the South East Corner of the Concrete SBC Pad in the South West Corner of 37th Street North and Tyler Road
 Sta. 8+56, 95' Rt.
 Elev. = 1342.17 MSL

SCALE:
 HORIZONTAL: 1" = 20'
 VERTICAL: 1" = 5'



CENTRAL MAIZE SCHOOLS ADDN
 Sta. 0+00.00, Begin SWS Line 1 = B.L. Sta. 7+80.34, 41.92' Rt. Install 24" Concrete End Section and 6.2 S.Y. Light Stone Rip Rap.

CAUTION!
 Existing 16" Water Crossing

SWS Line 1a
 Sta. 1+46.52, SWS Line 1 = Sta. 0+00.00, SWS Line 1a = B.L. Sta. 9+27.42, 50.00' Rt. Construct Shallow Type "P" Manhole. (6' Dia.) Top Elev. = 1343.65

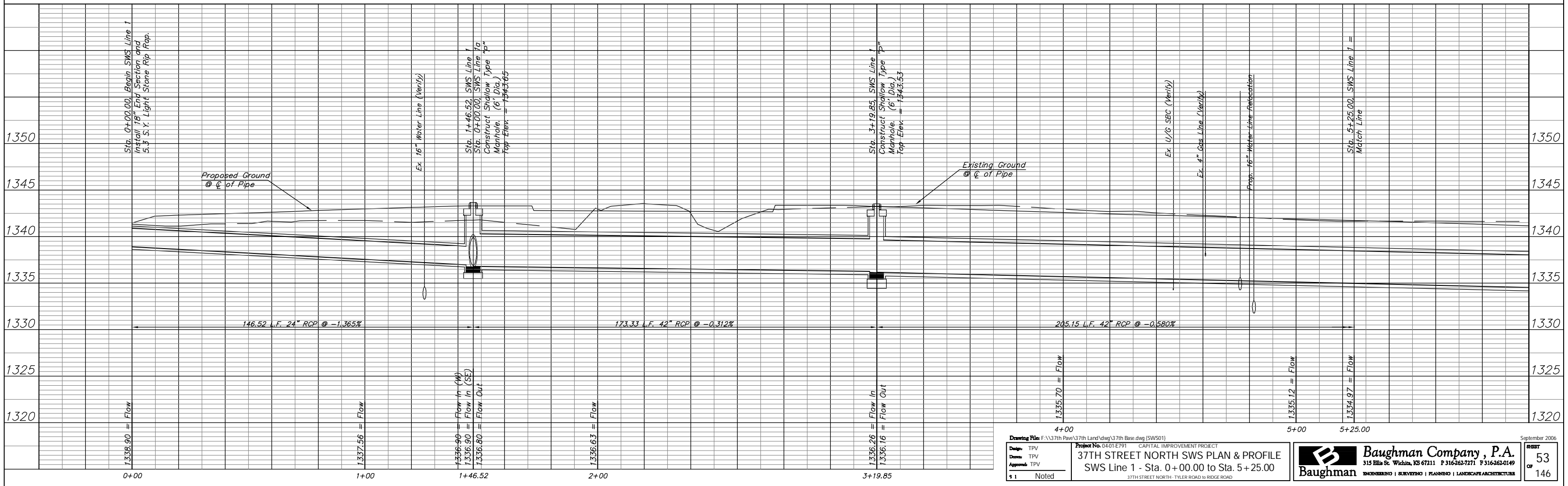
CAUTION!
 Existing O/H Elec Crossings

Sta. 3+19.85, SWS Line 1 = B.L. Sta. 10+99.96, 38.52' Rt. Construct Shallow Type "P" Manhole. (6' Dia.) Top Elev. = 1343.53

CAUTION!
 Existing U/G SBC 4" Gas 16" Water Crossing

TYLER'S LANDING COMMERCIAL ADDITION
 4 BLOCK A

CAUTION!
 Proposed 16" Water Crossing



Drawing File: F:\37th Pave\37th Land\dwg\37th Base.dwg (SW501)
 Project No. 04-01-E791 CAPITAL IMPROVEMENT PROJECT
 Design: TPV
 Drawn: TPV
 Approved: TPV
 1 Noted

37TH STREET NORTH SWS PLAN & PROFILE
 SWS Line 1 - Sta. 0+00.00 to Sta. 5+25.00
 37TH STREET NORTH - TYLER ROAD to RIDGE ROAD

Baughman Company, P.A.
 315 Ellis St. Wichita, KS 67211 P 316-262-7271 F 316-262-0149
 ENGINEERING | SURVEYING | PLANNING | LANDSCAPE ARCHITECTURE

September 2006
 SHEET
 53
 OF
 146