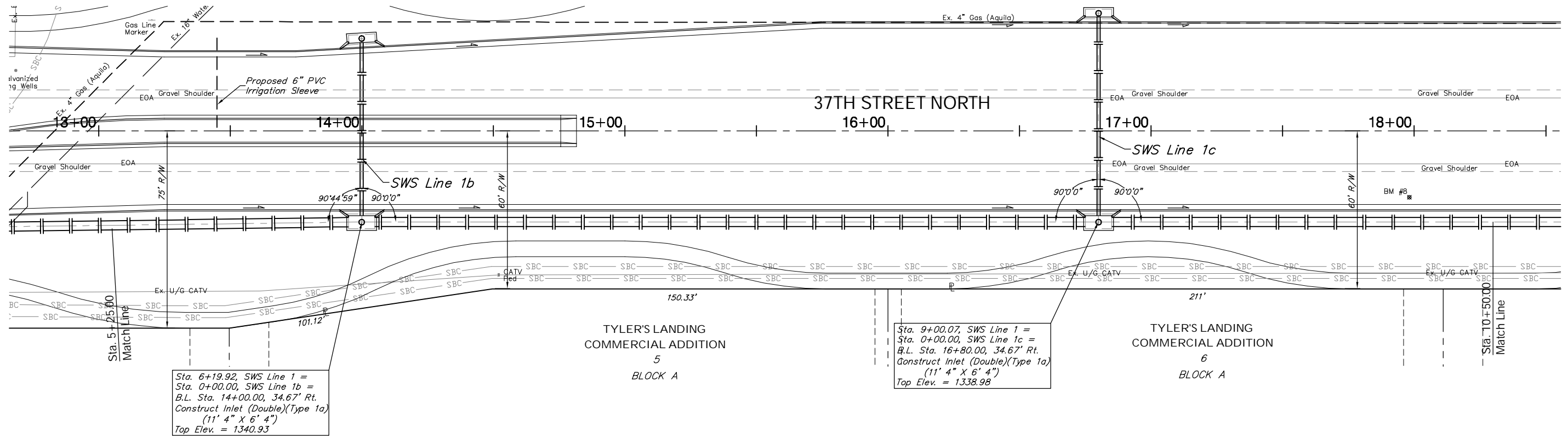


BENCHMARK:  
 BM #8 - Steel T-Post Driven 4' Deep  
 Sta. 18+00, 25' Rt.  
 Elev. = 1337.73 MSL

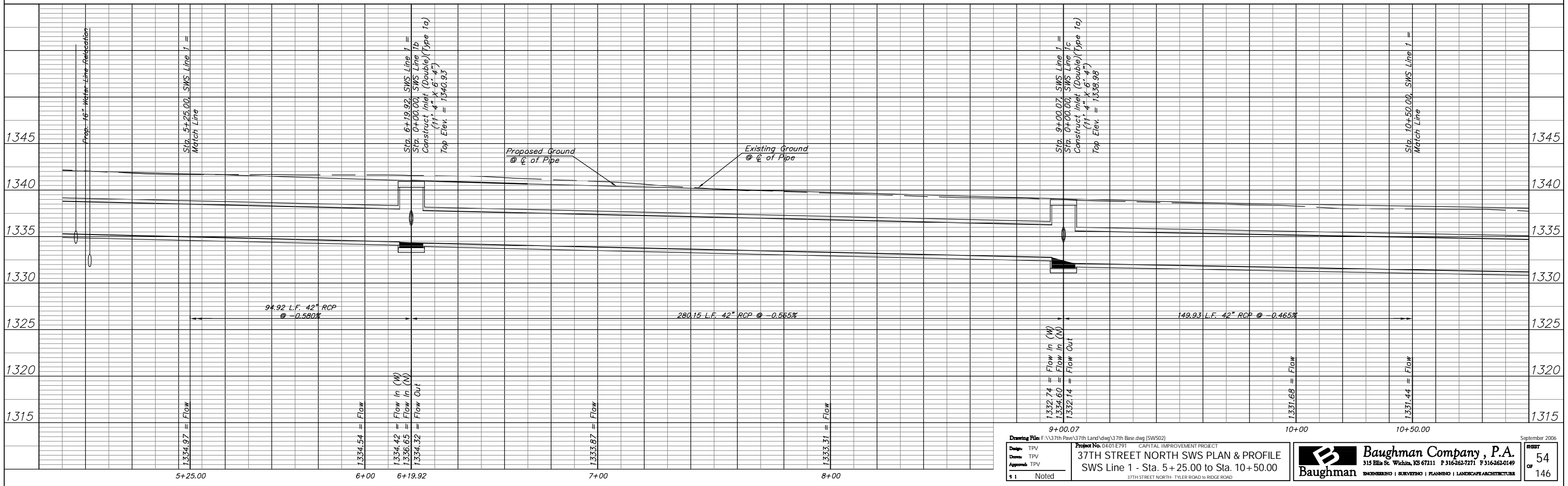
FHWA NO.	STATE	PROJECT NO.	FISCAL YEAR	SHEET NO.	TOTAL SHEETS
7	KANSAS	87 N-0346-01	2006	54	146

SCALE:  
 HORIZONTAL: 1" = 20'  
 VERTICAL: 1" = 5'



Sta. 9+00.07, SWS Line 1 =  
 Sta. 0+00.00, SWS Line 1c =  
 B.L. Sta. 16+80.00, 34.67' Rt.  
 Construct Inlet (Double) (Type 1a)  
 (11' 4" X 6' 4")  
 Top Elev. = 1338.98

Sta. 6+19.92, SWS Line 1 =  
 Sta. 0+00.00, SWS Line 1b =  
 B.L. Sta. 14+00.00, 34.67' Rt.  
 Construct Inlet (Double) (Type 1a)  
 (11' 4" X 6' 4")  
 Top Elev. = 1340.93



Drawing File: F:\37th Pave\37th Land\dwg\37th Base.dwg (SW502)  
 Design: TPV  
 Date: TPV  
 Approved: TPV  
 1 Noted

Project No. 04-01 E791 CAPITAL IMPROVEMENT PROJECT  
**37TH STREET NORTH SWS PLAN & PROFILE**  
 SWS Line 1 - Sta. 5+25.00 to Sta. 10+50.00  
 37TH STREET NORTH - TYLER ROAD TO RIDGE ROAD

**Baughman Company, P.A.**  
 315 Ellis St. Wichita, KS 67211 P 316-262-7271 F 316-262-0149  
 ENGINEERING | SURVEYING | PLANNING | LANDSCAPE ARCHITECTURE

September 2006  
 SHEET 54 OF 146