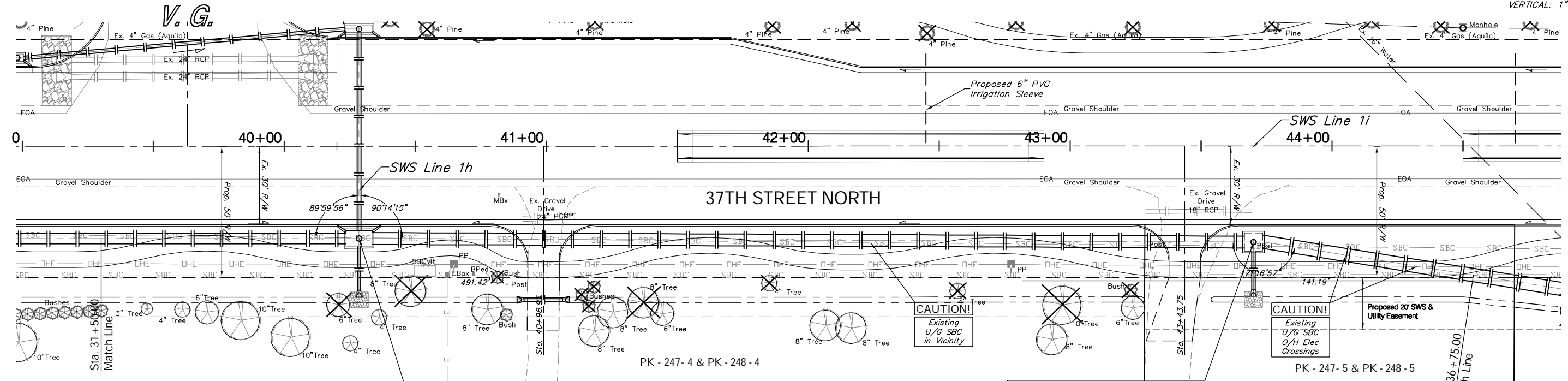


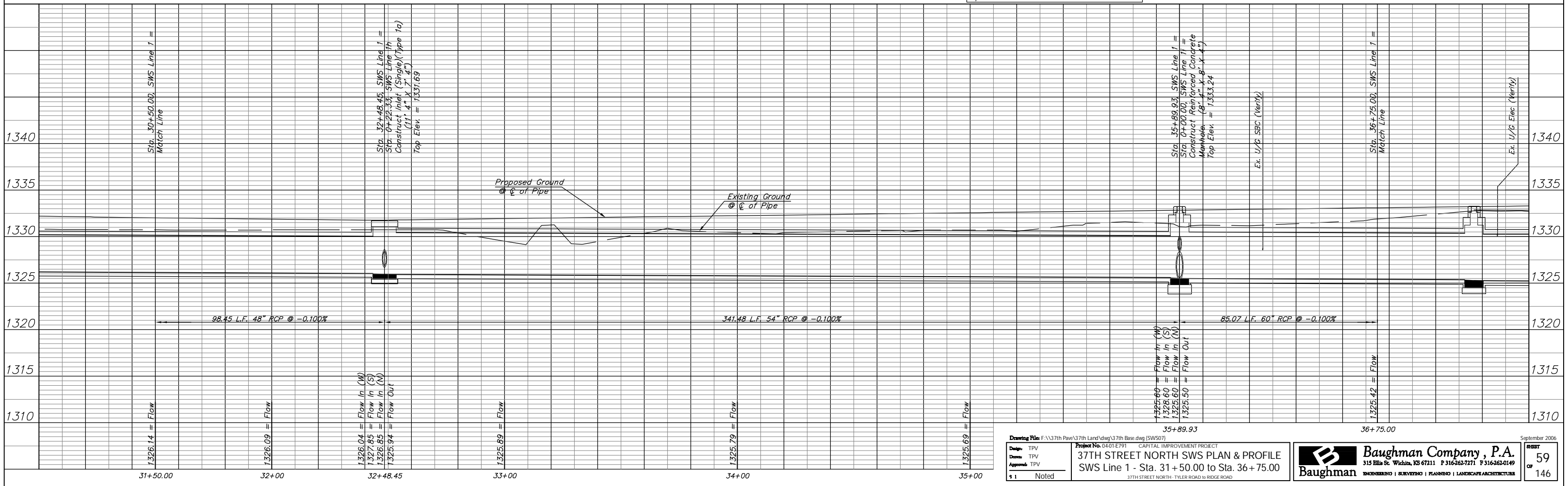
BENCHMARK:
 BM #4 - Railroad Spike in the North Face of the First Power/Light Pole West of Bridge on the South Side of 37th Street North
 Sta. 46+67, 47' Rt.
 Elev. = 1331.57 MSL

SCALE:
 HORIZONTAL: 1" = 20'
 VERTICAL: 1" = 5'



Sta. 32+48.45, SWS Line 1 =
 Sta. 0+22.33, SWS Line 1h =
 B.L. Sta. 40+28.53, 35.17' Rt.
 Construct Inlet (Double)(Type 1a)
 (11' 4" X 7' 4")
 Top Elev. = 1331.69

Sta. 35+89.93, SWS Line 1 =
 B.L. Sta. 43+70.00, 36.56' Rt.
 Construct Reinforced Concrete Manhole.
 (8' 4" X 8' X 4"). Install 20.94 L.F. 15"
 RCP (S) w/ End Section. Install 5.3
 Sq. Yds. Light Stone Rip Rap.
 FL Elev. = 1331.12 (15" End Section)
 Top Elev. = 1333.24



Drawing File: F:\37th Pave\37th Land\dwg\37th Base.dwg (SW/ST)
 Design: TPV
 Date: TPV
 Approved: TPV
 1 Noted

Project No. 04-01-E791 CAPITAL IMPROVEMENT PROJECT
37TH STREET NORTH SWS PLAN & PROFILE
 SWS Line 1 - Sta. 31+50.00 to Sta. 36+75.00
 37TH STREET NORTH - TYLER ROAD TO RIDGE ROAD

Baughman Company, P.A.
 315 Ellis St. Wichita, KS 67211 P 316-262-7271 F 316-262-0149
 ENGINEERING | SURVEYING | PLANNING | LANDSCAPE ARCHITECTURE