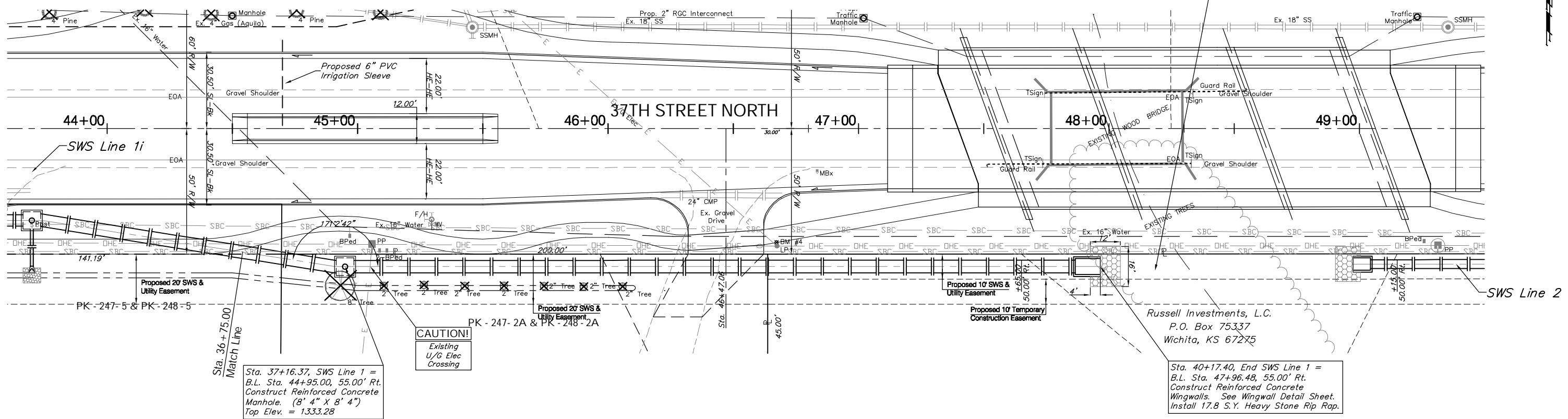


FHWA NO.	STATE	PROJECT NO.	FISCAL YEAR	SHEET NO.	TOTAL SHEETS
7	KANSAS	87 N-0346-01	2006	60	146

BENCHMARK:
 BM #4 - Railroad Spike in the North Face of the First Power/Light Pole West of Bridge on the South Side of 37th Street North
 Sta. 46+67, 47' Rt.
 Elev. = 1331.57 MSL

Additional Grading May be Required for the SWS System to Drain Until the Bridge Grading is Complete. Additional Existing Rip Rap may be Re-Used Provided that Deleterious Materials Have Been Removed and Subject to Engineer's Approval. Cast for this Work to be SUBSIDIARY to SWS Construction.

SCALE:
 HORIZONTAL: 1" = 20'
 VERTICAL: 1" = 5'

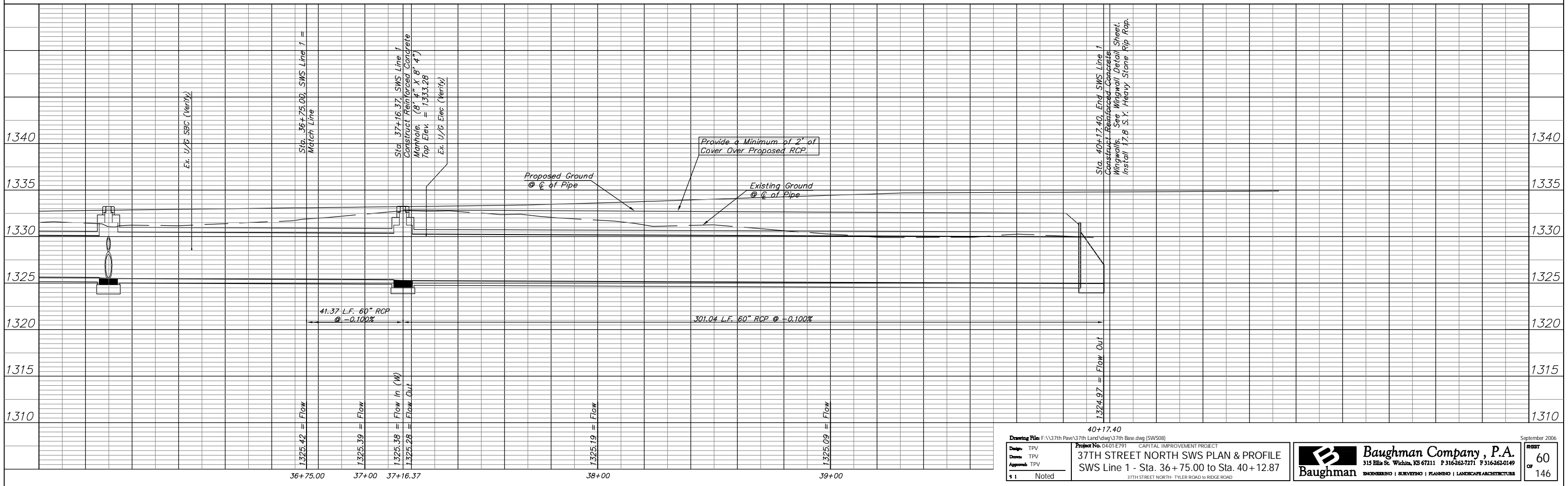


Sta. 37+16.37, SWS Line 1 = B.L. Sta. 44+95.00, 55.00' Rt. Construct Reinforced Concrete Manhole. (8' 4" X 8' 4") Top Elev. = 1333.28

Sta. 40+17.40, End SWS Line 1 = B.L. Sta. 47+96.48, 55.00' Rt. Construct Reinforced Concrete Wingwalls. See Wingwall Detail Sheet. Install 17.8 S.Y. Heavy Stone Rip Rap.

CAUTION!
 Existing U/G Elec Crossing

Russell Investments, L.C.
 P.O. Box 75337
 Wichita, KS 67275



Drawing File: F:\37th Pave\37th Land\dwg\37th Base.dwg (SW/08)
 Project No. 04-01 E791 CAPITAL IMPROVEMENT PROJECT
37TH STREET NORTH SWS PLAN & PROFILE
 SWS Line 1 - Sta. 36+75.00 to Sta. 40+12.87
 37TH STREET NORTH - TYLER ROAD TO RIDGE ROAD

Baughman Company, P.A.
 315 Ella St. Wichita, KS 67211 P 316-262-7271 F 316-262-0149
 ENGINEERING | SURVEYING | PLANNING | LANDSCAPE ARCHITECTURE

September 2006
 SHEET
60
 OF
 146