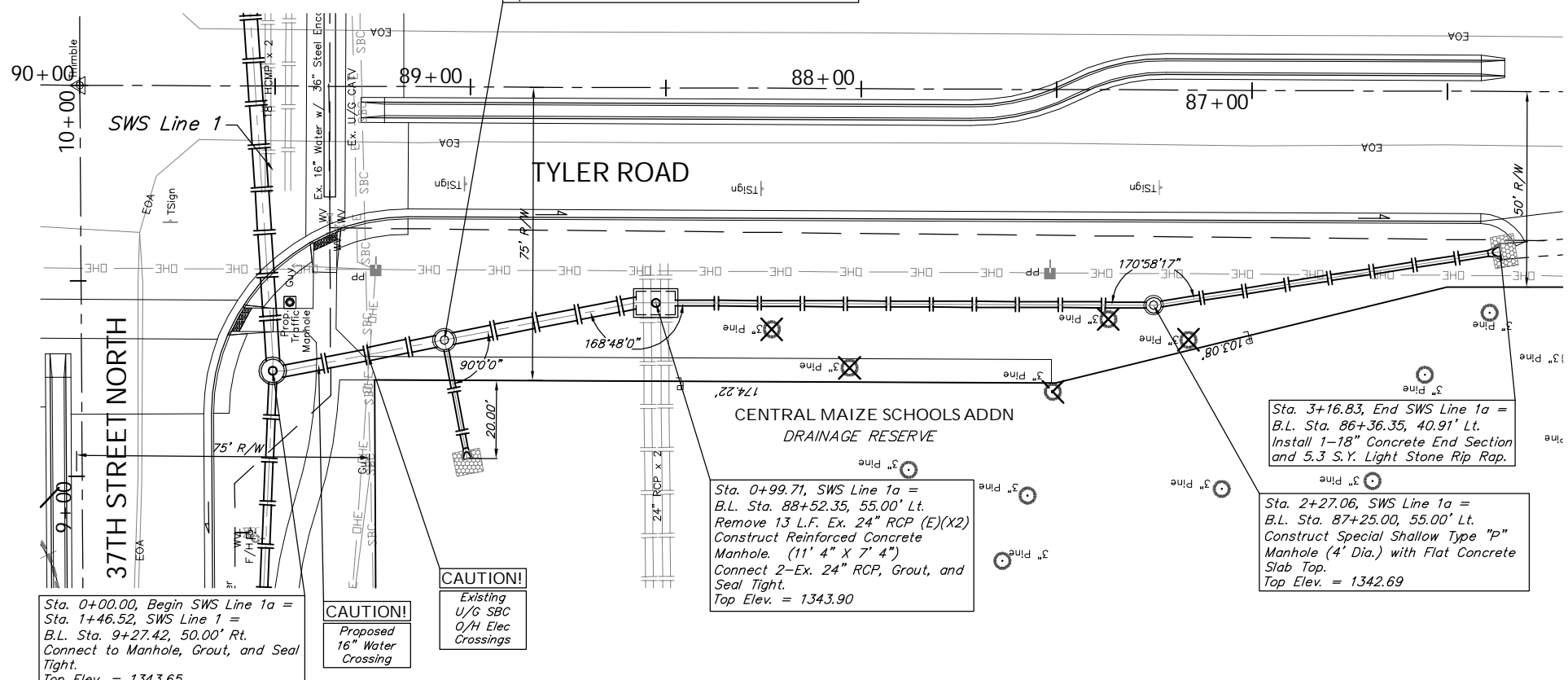


BENCHMARK:
 BM #9 - " " in the South East Corner of the Concrete SBC Pad in the South West Corner of 37th Street North and Tyler Road
 Sta. 8+56, 95' Rt.
 Elev. = 1342.17 MSL

Sta. 0+44.70, SWS Line 1a =
 B.L. Sta. 89+06.42, 64.71' Lt.
 Construct Std. Shallow Type "P" Manhole (5' Dia.)
 Install 30.87 L.F. 15" RCP (SW) w/ End Section.
 Install 5.3 Sq. Yds. Light Stone Rip Rap.
 FL Elev. = 1342.00 (15" End Section)
 Top Elev. = 1344.10

SCALE:
 HORIZONTAL: 1" = 20'
 VERTICAL: 1" = 5'



Sta. 0+00.00, Begin SWS Line 1a =
 Sta. 1+46.52, SWS Line 1 =
 B.L. Sta. 9+27.42, 50.00' Rt.
 Connect to Manhole, Grout, and Seal Tight.
 Top Elev. = 1343.65

CAUTION!
 Existing U/G SBC
 O/H Elec Crossings

Sta. 0+99.71, SWS Line 1a =
 B.L. Sta. 88+52.35, 55.00' Lt.
 Remove 13 L.F. Ex. 24" RCP (E)(X2)
 Construct Reinforced Concrete Manhole (11' 4" X 7' 4")
 Connect 2-Ex. 24" RCP, Grout, and Seal Tight.
 Top Elev. = 1343.90

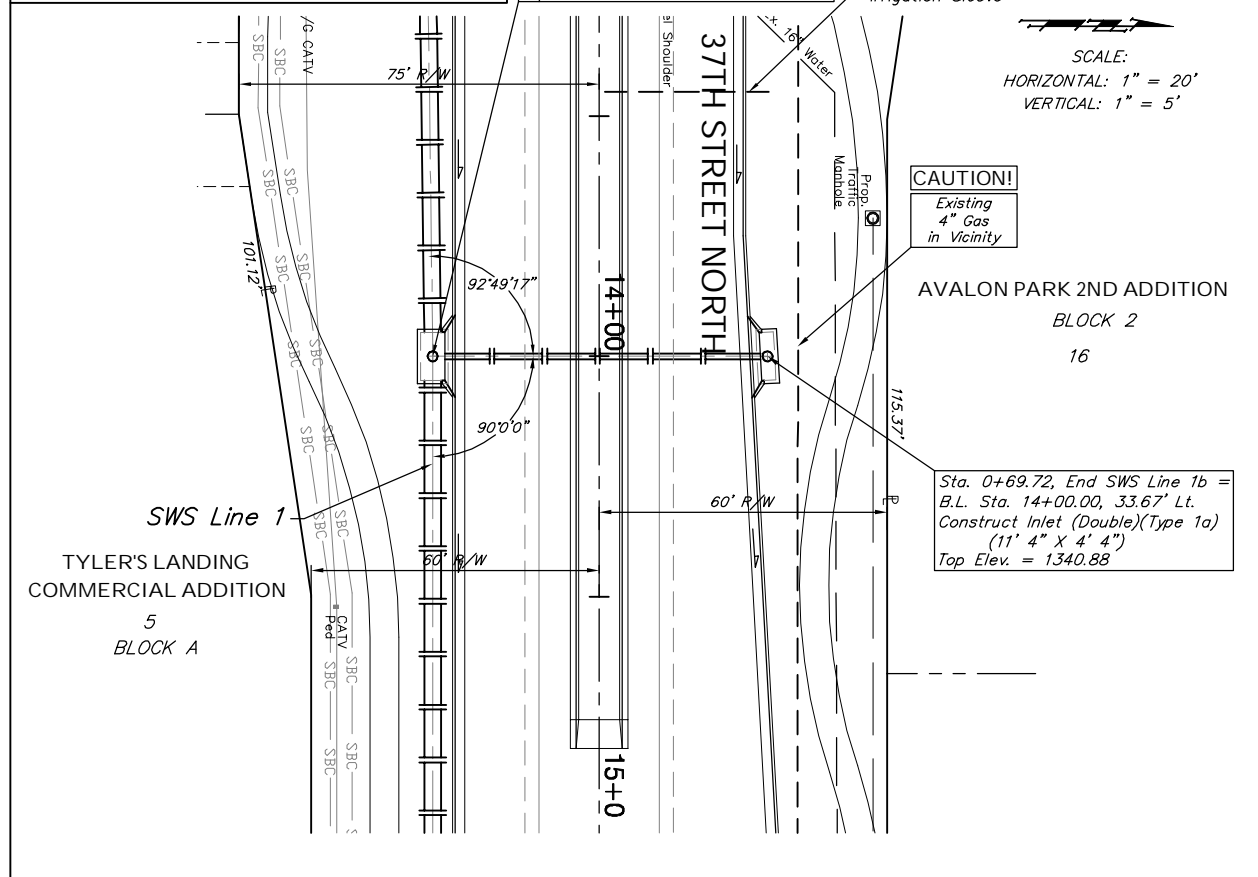
Sta. 2+27.06, SWS Line 1a =
 B.L. Sta. 87+25.00, 55.00' Lt.
 Construct Special Shallow Type "P" Manhole (4' Dia.) with Flat Concrete Slab Top.
 Top Elev. = 1342.69

Sta. 3+16.83, End SWS Line 1a =
 B.L. Sta. 86+36.35, 40.91' Lt.
 Install 1-18" Concrete End Section and 5.3 S.Y. Light Stone Rip Rap.

BENCHMARK:
 BM #9 - " " in the South East Corner of the Concrete SBC Pad in the South West Corner of 37th Street North and Tyler Road
 Sta. 8+56, 95' Rt.
 Elev. = 1342.17 MSL

Sta. 0+00.00, Begin SWS Line 1b =
 Sta. 6+19.92, SWS Line 1 =
 B.L. Sta. 14+00.00, 34.67' Rt.
 Connect to Inlet, Grout, and Seal Tight.
 Top Elev. = 1340.93

SCALE:
 HORIZONTAL: 1" = 20'
 VERTICAL: 1" = 5'



CAUTION!
 Existing 4" Gas in Vicinity

AVALON PARK 2ND ADDITION
 BLOCK 2
 16

Sta. 0+69.72, End SWS Line 1b =
 B.L. Sta. 14+00.00, 33.67' Lt.
 Construct Inlet (Double)(Type 1a) (11' 4" X 4' 4")
 Top Elev. = 1340.88

Station	Flow In (W)	Flow In (SE)	Flow In (SW)	Flow In (S)	Flow Out	Flow In (W) (Verify)	Flow In (SW)	Flow In (S)	Flow
0+00.00	1336.80	1336.90	1336.90						
0+44.70	1337.73	1339.48	1337.73						
0+99.71	1338.75	1340.24	1338.75						
2+27.06	1339.38	1339.49							
3+16.83	1340.00								
0+00.00									
0+69.72									