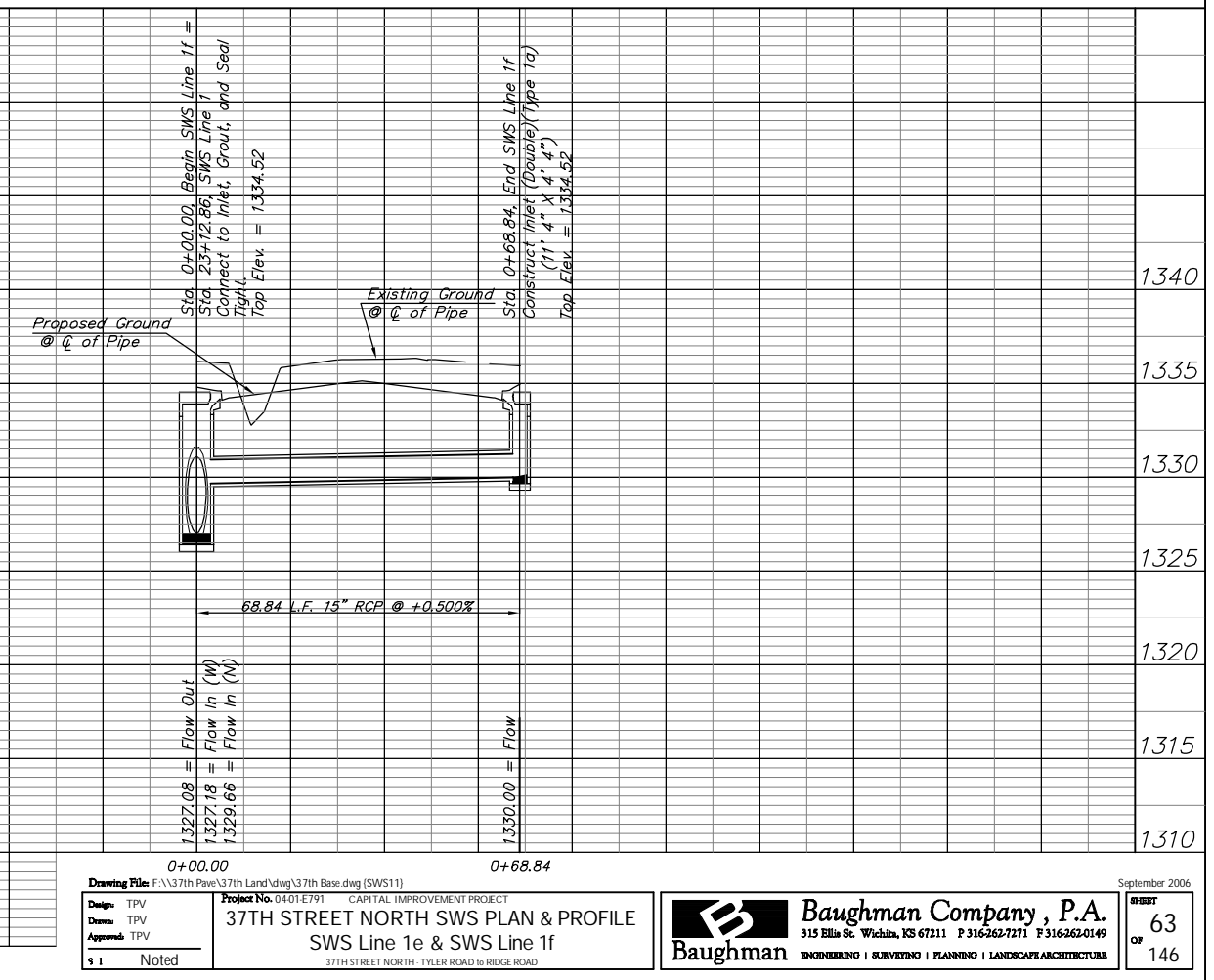
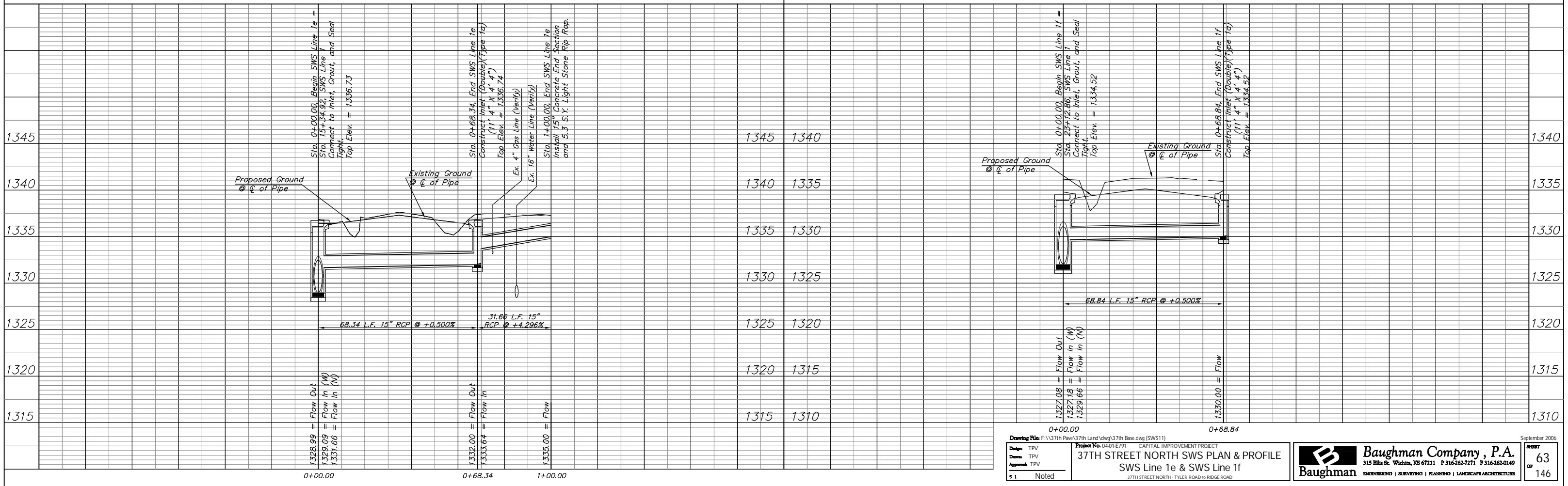
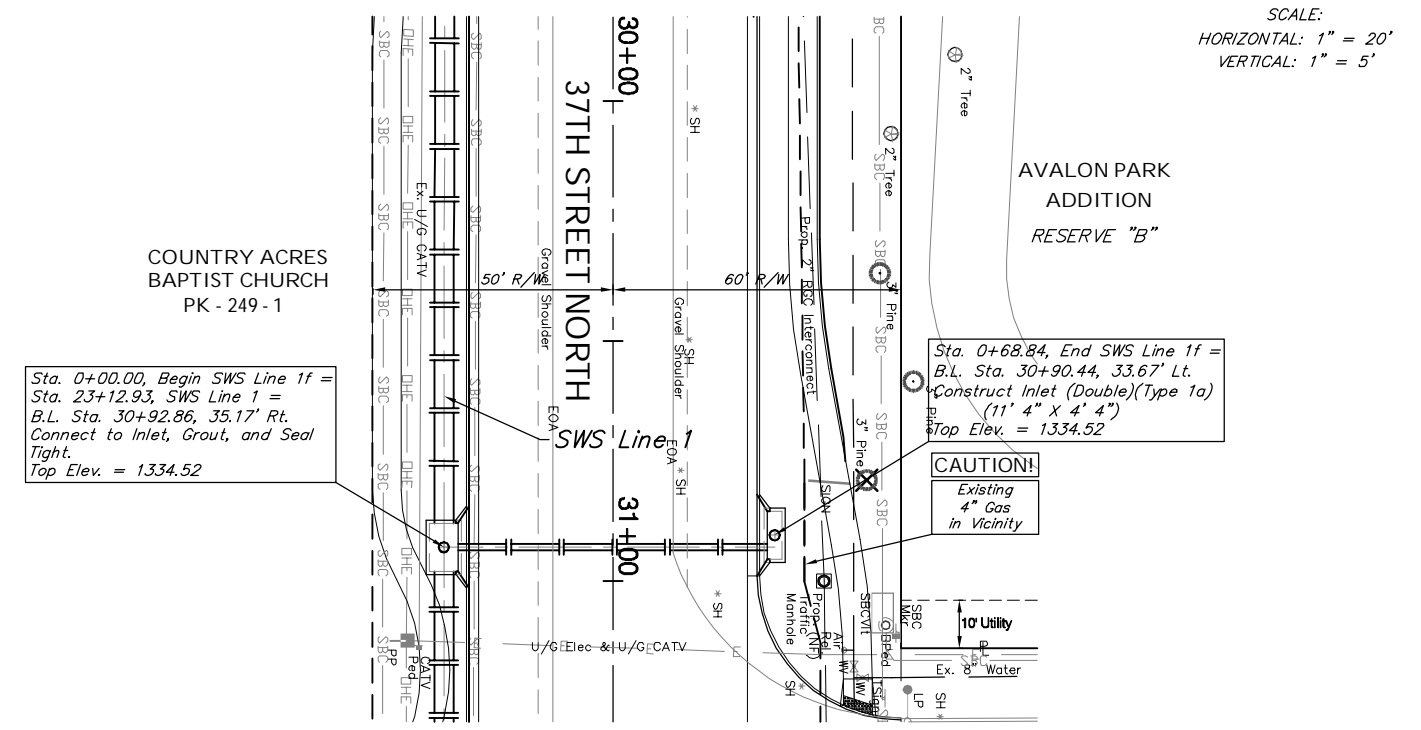
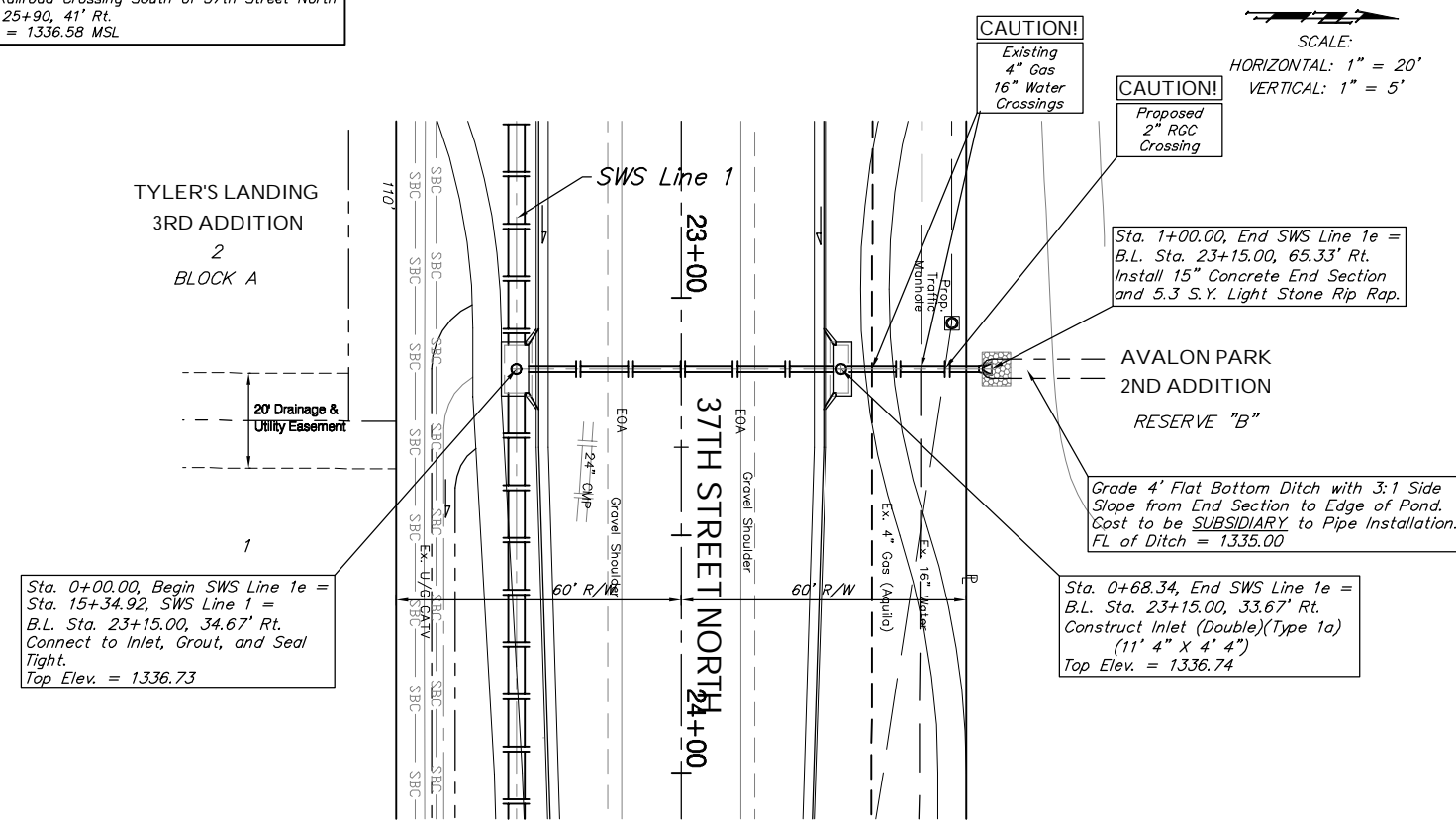


BENCHMARK:
 BM #7 - "X" on the West End of the Steel Casing Pipe at the Railroad Crossing South of 37th Street North Sta. 25+90, 41' Rt. Elev. = 1336.58 MSL

BENCHMARK:
 BM #6 - "T" Cut in the Top of Curb on the North End of the Median at the Intersection of Lakeridge and 37th Street North. Sta. 31+72, 178' Lt. Elev. = 1333.85 MSL

SCALE:
 HORIZONTAL: 1" = 20'
 VERTICAL: 1" = 5'

SCALE:
 HORIZONTAL: 1" = 20'
 VERTICAL: 1" = 5'



Drawing File: F:\37th Pave\37th Land\dwg\37th Base.dwg (SWS11)
 Project No. 0401 E791 CAPITAL IMPROVEMENT PROJECT
 37TH STREET NORTH SWS PLAN & PROFILE
 SWS Line 1e & SWS Line 1f
 37TH STREET NORTH - TYLER ROAD TO RIDGE ROAD