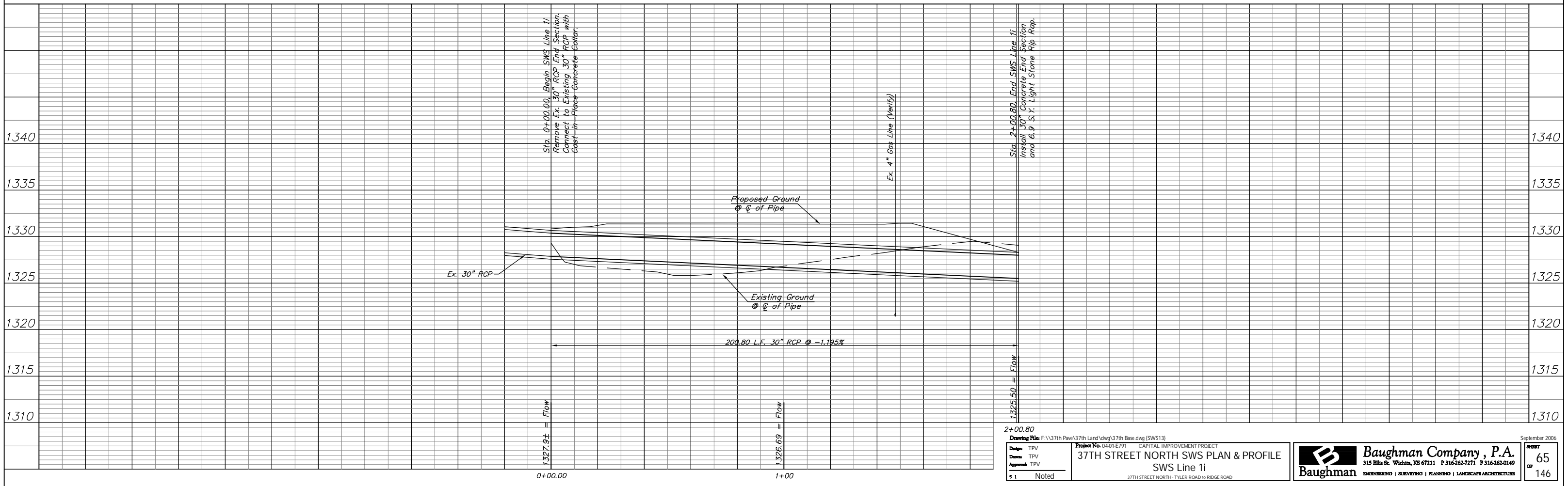
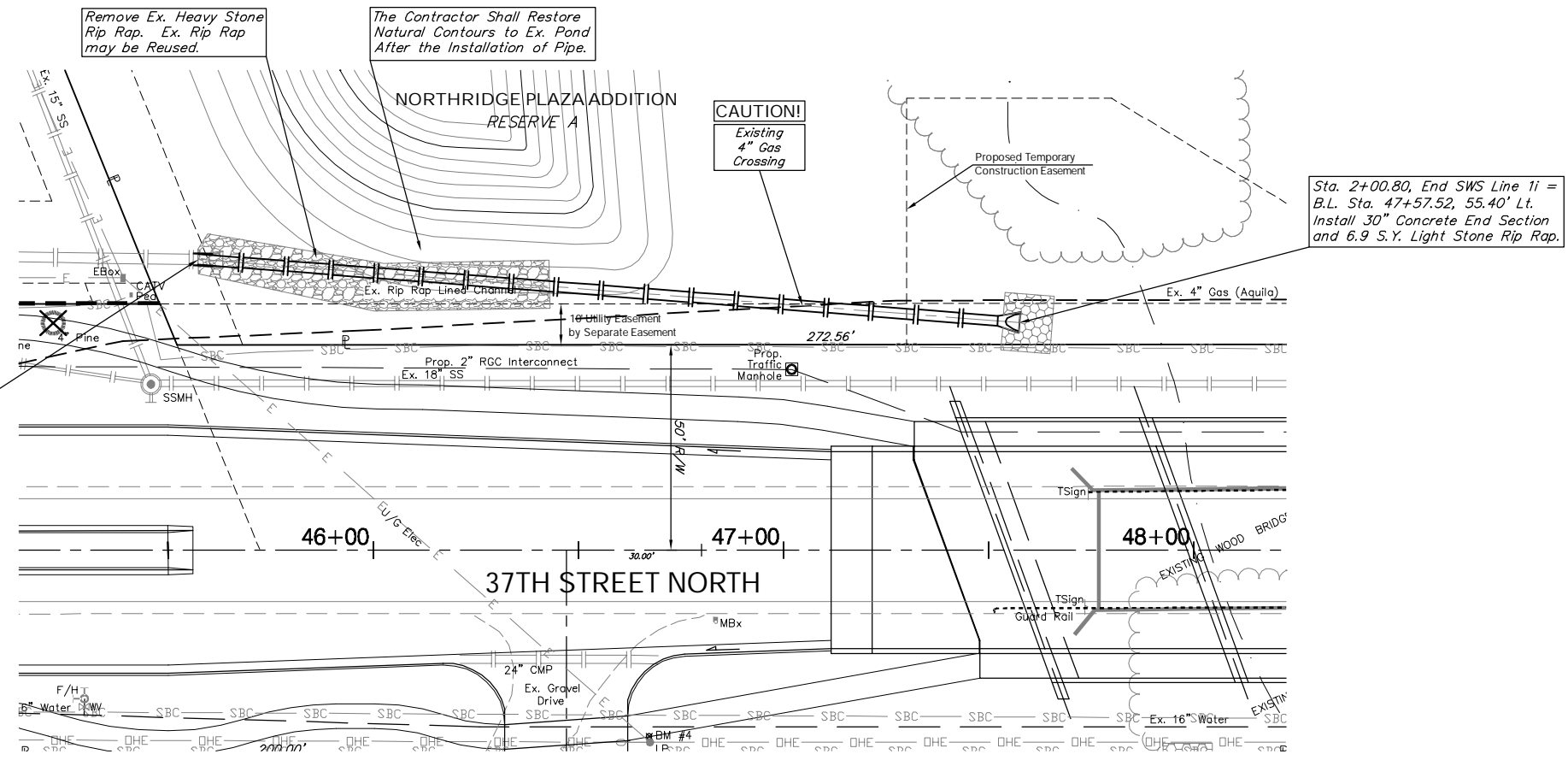


| FHWA NO. KBO00N | STATE | PROJECT NO. | FISCAL YEAR | SHEET NO. | TOTAL SHEETS |
|-----------------|--------|--------------|-------------|-----------|--------------|
| 7 | KANSAS | 87 N-0346-01 | 2006 | 65 | 146 |

BENCHMARK:
 BM #4 - Railroad Spike in the North Face of the First Power/Light Pole West of Bridge on the South Side of 37th Street North
 Sta. 46+67, 47' Rt.
 Elev. = 1331.57 MSL

Sta. 0+00.00, Begin SWS Line 1i = B.L. Sta. 45+57.31, 70.83' Lt. Remove Ex. 30" RCP End Section. Connect to Existing 30" RCP with Cast-in-Place Concrete Collar.



Drawing File: F:\37th Pave\37th Land\dwg\37th Base.dwg (SWS13)

Design: TPV
 Drawn: TPV
 Approved: TPV
 9 1 Noted

Project No. 04-01-E791 CAPITAL IMPROVEMENT PROJECT
 37TH STREET NORTH SWS PLAN & PROFILE
 SWS Line 1i
 37TH STREET NORTH - TYLER ROAD TO RIDGE ROAD

Baughman Company, P.A.
 315 Ella St. Wichita, KS 67211 P 316-262-7271 F 316-262-0149
 ENGINEERING | SURVEYING | PLANNING | LANDSCAPE ARCHITECTURE

September 2006
 SHEET 65 OF 146