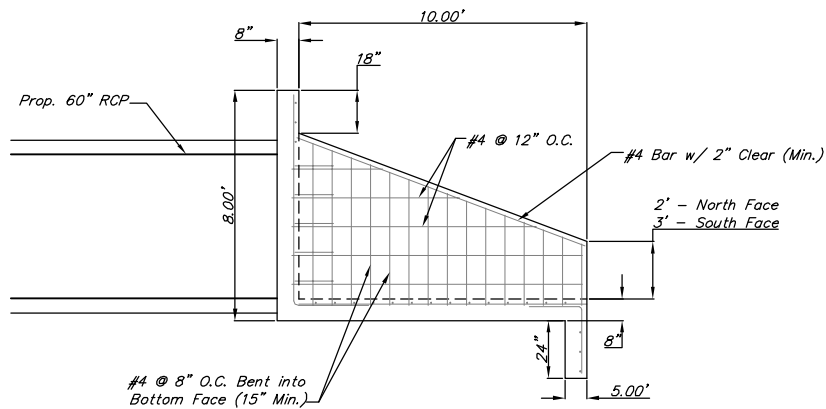
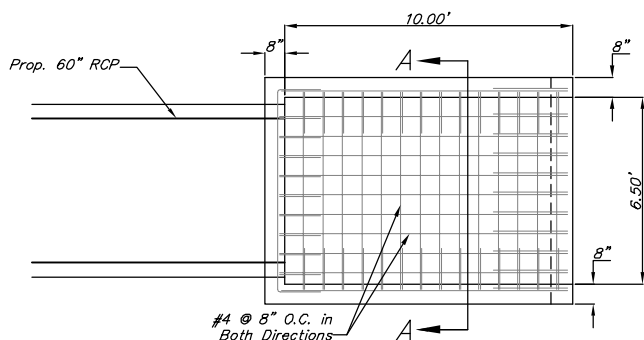


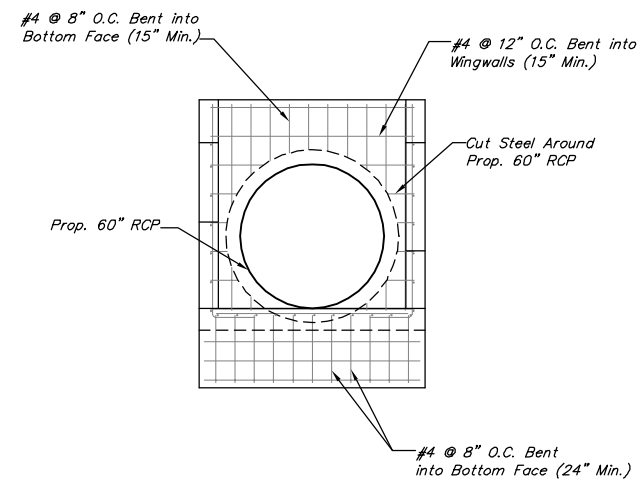
FHWA REGION NO.	STATE	PROJECT NO.	FISCAL YEAR	SHEET NO.	TOTAL SHEETS
7	KANSAS	87 N-0346-01	2006	77	146



EXTERIOR WALL ELEVATION



PLAN
60" RCP Headwall
Sta. 40+12.87, SWS Line 1



SECTION A-A

General Notes

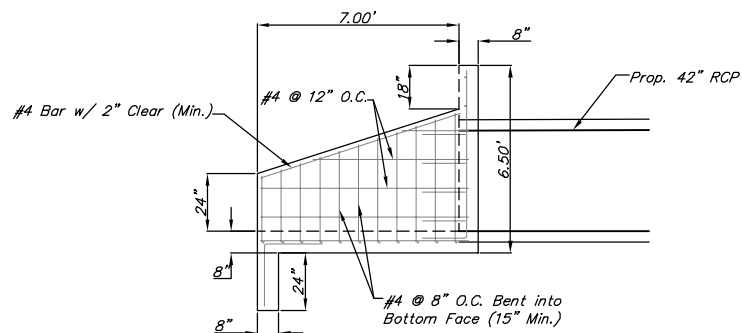
Bevel all exposed edges with a 3/4" triangular molding or an approved edging tool.

Reinforcing Steel shall be a minimum Grade 60 ASTM A615.

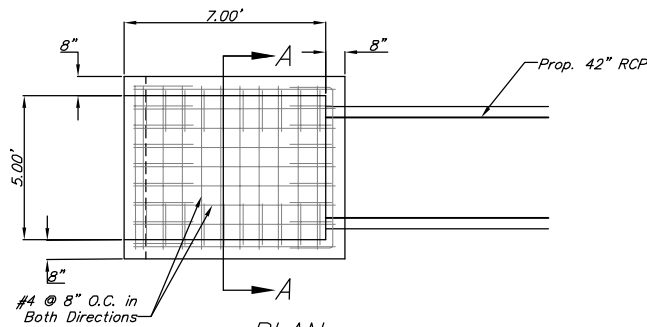
All dimensions relative to placement of reinforcing are to the centerline of bars unless otherwise noted. All Clearances are 2" unless otherwise noted.

Reinforcement shall be field bent or cut to clear pipe leaving structure.

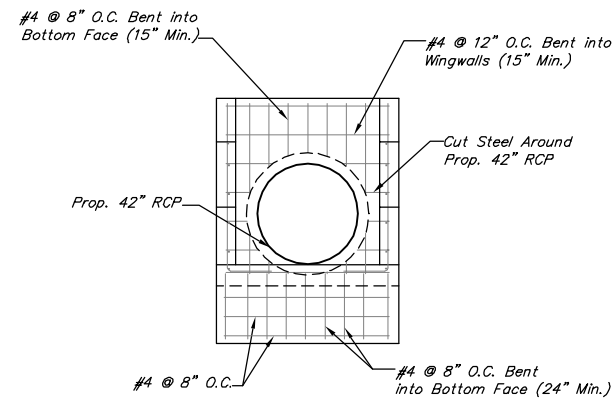
Wingwalls shall be measured and paid for at the contract unit price bid per each. This shall be considered full compensation for all excavation, backfilling, materials, labor, equipment, tools and incidentals necessary to complete the work.



EXTERIOR WALL ELEVATION



PLAN
42" RCP Headwall
Sta. 0+19.48, SWS Line 2



SECTION A-A

Drawing File: F:\eng\37th Pave\Details\Wingwalls.dwg

Project No. 04-01-E791 CAPITAL IMPROVEMENT PROJECT
REINFORCED CONCRETE
WINGWALL DETAILS
37TH STREET NORTH - TYLER ROAD TO RIDGE ROAD

Baughman Company, P.A.
315 Ellis St. Wichita, KS 67211 P 316-262-7271 F 316-262-0149
ENGINEERING | SURVEYING | PLANNING | LANDSCAPE ARCHITECTURE

September 2006

SHEET
77
OF
146