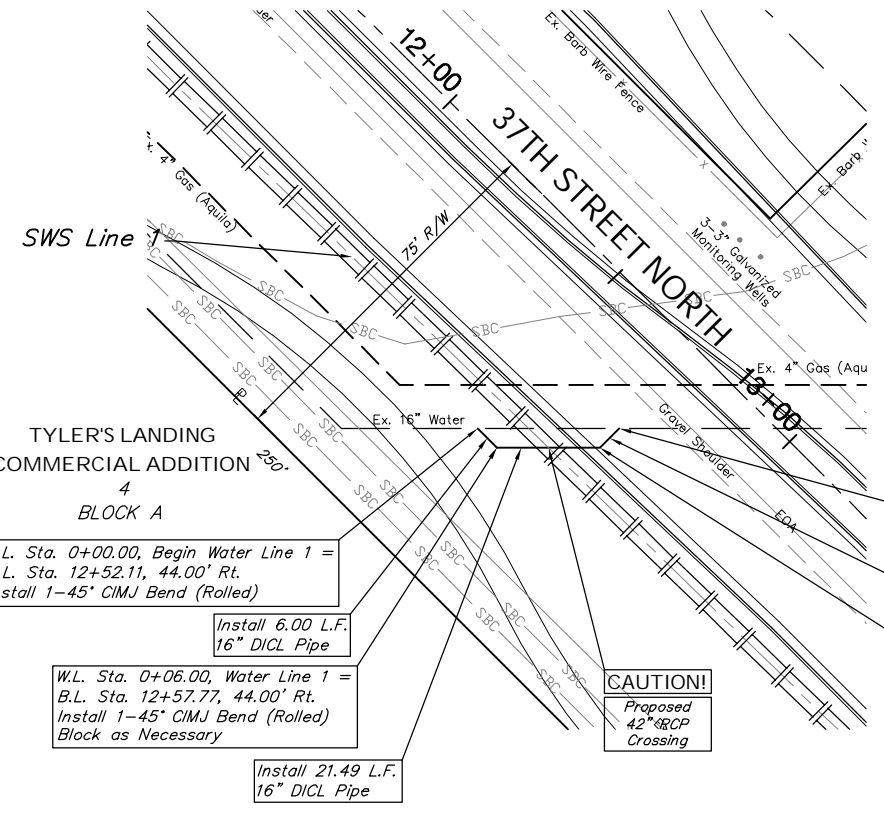


FHWA NO. KBO00N	STATE	PROJECT NO.	FISCAL YEAR	SHEET NO.	TOTAL SHEETS
7	KANSAS	87 N-0346-01	2006	78	146

BENCHMARK:
 BM #3 - Cut in the Concrete Footing of a Steel Fence
 Corner Post South of 37th Street North
 Sta. 49+91, 48' Rt.
 Elev. = 1329.25 MSL

SCALE:
 HORIZONTAL: 1" = 20'
 VERTICAL: 1" = 5'



W.L. Sta. 0+00.00, Begin Water Line 1 =
 B.L. Sta. 12+52.11, 44.00' Rt.
 Install 1-45° CIMJ Bend (Rolled)

Install 6.00 L.F. 16" DICL Pipe

W.L. Sta. 0+06.00, Water Line 1 =
 B.L. Sta. 12+57.77, 44.00' Rt.
 Install 1-45° CIMJ Bend (Rolled)
 Block as Necessary

Install 21.49 L.F. 16" DICL Pipe

W.L. Sta. 0+33.49, End Water Line 1 =
 B.L. Sta. 12+72.97, 28.80' Rt.
 Install 1-45° CIMJ Bend (Rolled)

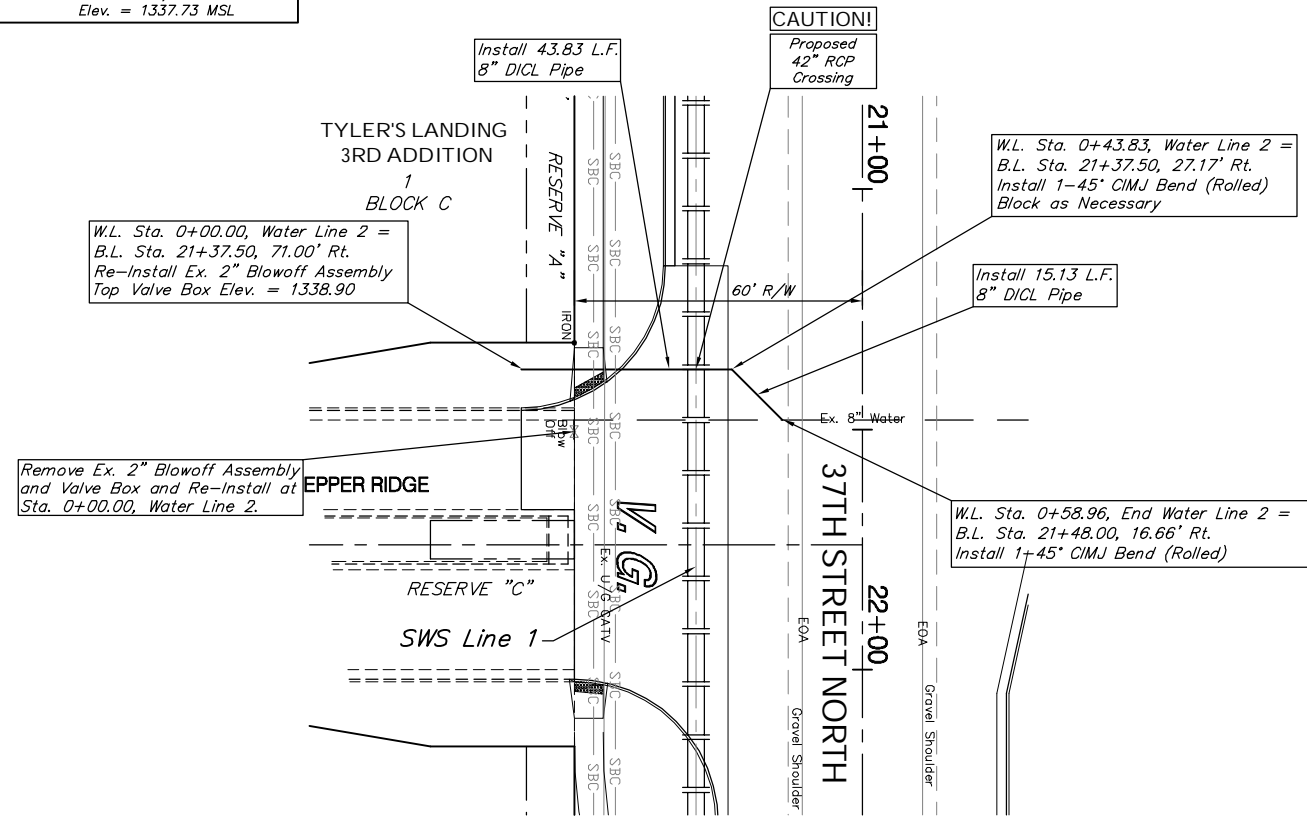
Install 6.00 L.F. 16" DICL Pipe

W.L. Sta. 0+27.49, Water Line 1 =
 B.L. Sta. 12+72.97, 23.14' Rt.
 Install 1-45° CIMJ Bend (Rolled)
 Block as Necessary

CAUTION!
 Proposed 42" RCP Crossing

BENCHMARK:
 BM #8 - Steel T-Post Driven 4' Deep
 Sta. 18+00, 25' Rt.
 Elev. = 1337.73 MSL

SCALE:
 HORIZONTAL: 1" = 20'
 VERTICAL: 1" = 5'



W.L. Sta. 0+00.00, Water Line 2 =
 B.L. Sta. 21+37.50, 71.00' Rt.
 Re-Install Ex. 2" Blowoff Assembly
 Top Valve Box Elev. = 1338.90

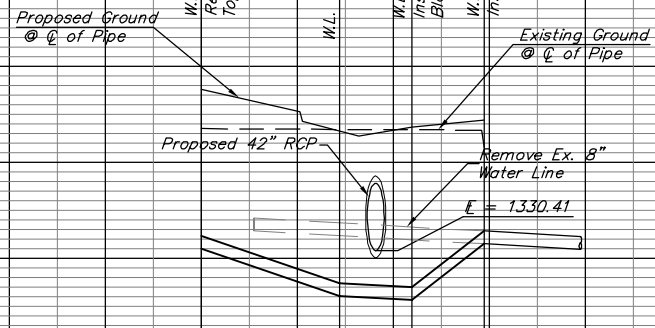
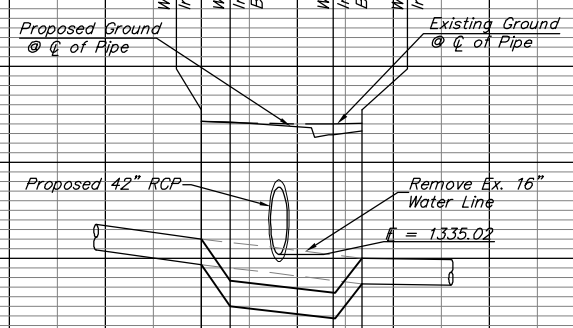
Remove Ex. 2" Blowoff Assembly
 and Valve Box and Re-Install at
 Sta. 0+00.00, Water Line 2.

W.L. Sta. 0+43.83, Water Line 2 =
 B.L. Sta. 21+37.50, 27.17' Rt.
 Install 1-45° CIMJ Bend (Rolled)
 Block as Necessary

Install 15.13 L.F. 8" DICL Pipe

W.L. Sta. 0+58.96, End Water Line 2 =
 B.L. Sta. 21+48.00, 16.66' Rt.
 Install 1-45° CIMJ Bend (Rolled)

CAUTION!
 Proposed 42" RCP Crossing



1336.00 = T.P.
 1333.83 = T.P.
 1335.18 = T.P.
 1335.00 = T.P.

0+00.00
 0+06.00

0+27.49
 0+33.49

0+00.00 0+28.83 0+43.83 0+58.96

Drawing File: F:\37th Pave\37th Land\dwg\37th Base.dwg (Wtr 01)
 Project No. 0401 E791 CAPITAL IMPROVEMENT PROJECT
37TH STREET NORTH WATER LINE
RELOCATIONS - LINES 1 & 2
 37TH STREET NORTH - TYLER ROAD TO RIDGE ROAD

Baughman Company, P.A.
 315 Ellis St. Wichita, KS 67211 P 316-262-7271 F 316-262-0149
 ENGINEERING | SURVEYING | PLANNING | LANDSCAPE ARCHITECTURE

September 2006
 SHEET
78
 OF
 146