

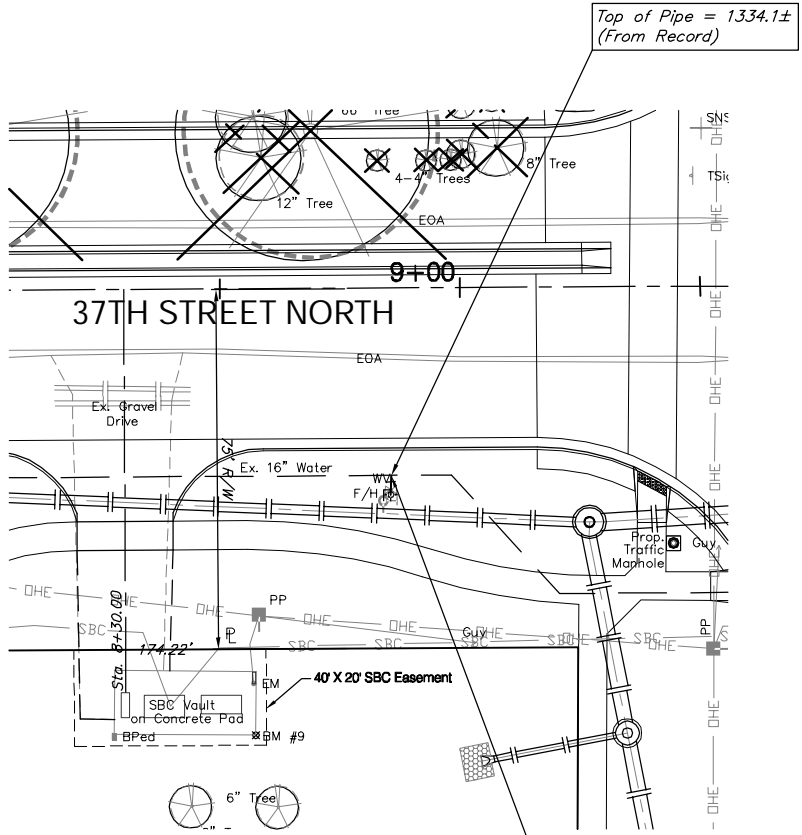
FHWA NO.	STATE	PROJECT NO.	FISCAL YEAR	SHEET NO.	TOTAL SHEETS
7	KANSAS	87 N-0346-01	2006	79	146

BENCHMARK:
 BM #9 - "□" in the South East Corner of the Concrete SBC Pad in the South West Corner of 37th Street North and Tyler Road
 Sta. 8+56, 95' Rt.
 Elev. = 1342.17 MSL

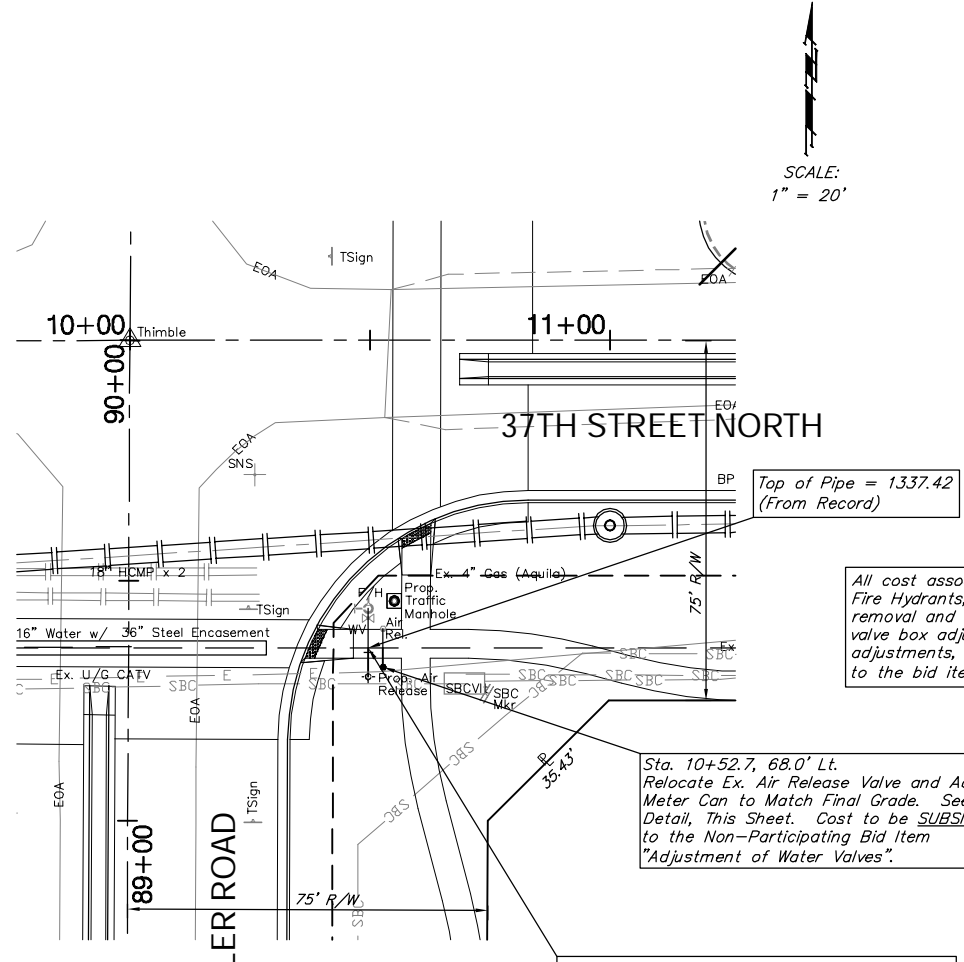
BENCHMARK:
 BM #9 - "□" in the South East Corner of the Concrete SBC Pad in the South West Corner of 37th Street North and Tyler Road
 Sta. 8+56, 95' Rt.
 Elev. = 1342.17 MSL

BENCHMARK:
 BM #2 - Railroad Spike in the North Face of the Third Power Pole West of Ridge Road on the South Side of 37th Street North
 Sta. 57+38, 48' Rt.
 Elev. = 1333.43 MSL

All cost associated with relocating the Ex. Fire Hydrants, including but not limited to removal and resetting of existing fittings, valve box adjustments, and hydrant bury line adjustments, shall be considered **SUBSIDIARY** to the bid item "Fire Hydrant Relocations."



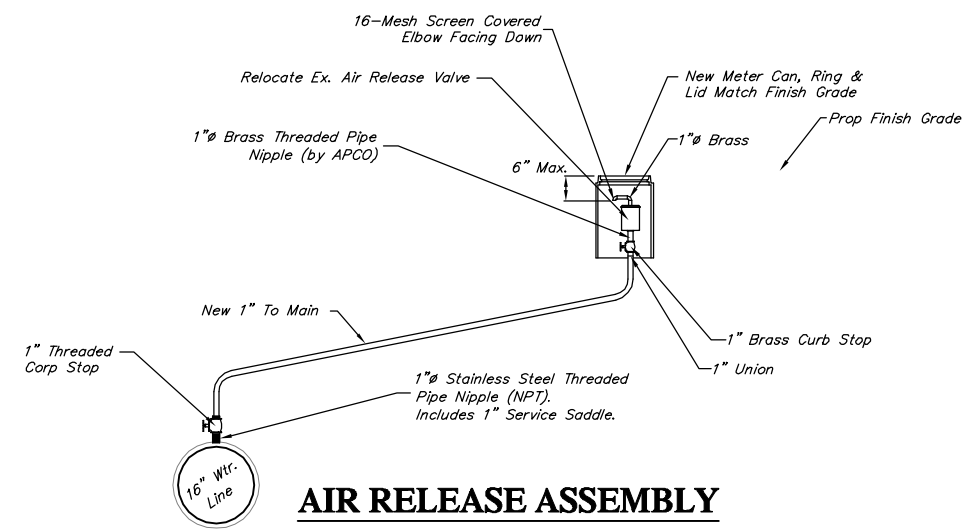
Sta. 8+81.4 39.0' Lt.
 The Contractor Shall Excavate the Ex. Swing Fire Hydrant Assy. and Shorten Lead to Approximately 4'.
 L = 4.00'
 Prop. Bury Line Elev. = 1342.9
 Prop. Valve Box Elev. = 1343.1



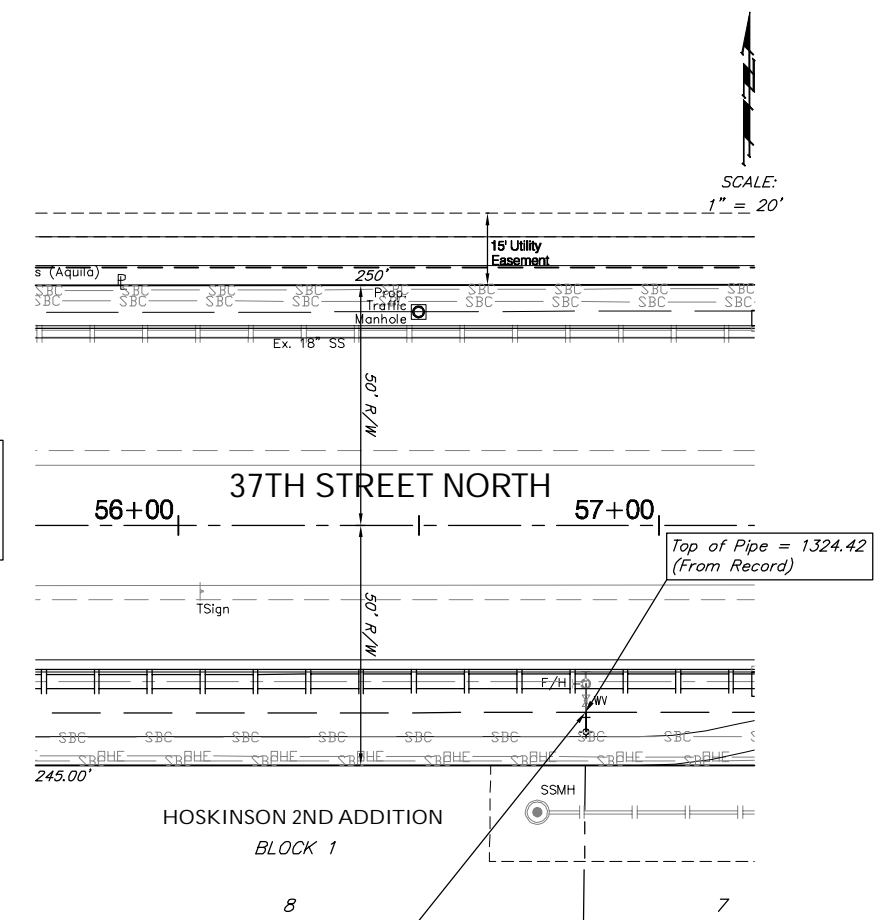
All cost associated with relocating the Ex. Fire Hydrants, including but not limited to removal and resetting of existing fittings, valve box adjustments, and hydrant bury line adjustments, shall be considered **SUBSIDIARY** to the bid item "Fire Hydrant Relocations."

Sta. 10+52.7, 68.0' Lt.
 Relocate Ex. Air Release Valve and Adjust Meter Can to Match Final Grade. See Detail, This Sheet. Cost to be **SUBSIDIARY** to the Non-Participating Bid Item "Adjustment of Water Valves".

Sta. 10+50.4, 64.0' Lt.
 Remove Existing Fire Hydrant and 6" Gate Valve (S). Rotate Ex. 16" X 6" CIMJ Tee (180° Vertical). Reinstall Gate Valve and Fire Hydrant w/ 6" Anchored Coupling.
 L = 6.00'
 Ex. Bury Line Elev. = 1342.4 (From Record)
 Prop. Bury Line Elev. = 1343.5
 Prop. Valve Box Elev. = 1343.2



AIR RELEASE ASSEMBLY



Sta. 56+84.8, 39.0' Lt.
 Remove Existing Fire Hydrant and 6" Gate Valve (N). Rotate Ex. 16" X 6" CIMJ Tee (180° Vertical). Reinstall Gate Valve and Fire Hydrant w/ 6" Anchored Coupling.
 L = 4.00'
 Ex. Bury Line Elev. = 1329.4 (From Record)
 Prop. Bury Line Elev. = 1333.2
 Prop. Valve Box Elev. = 1332.6

Drawing File: F:\37th Pave\37th Land\dwg\37th Base.dwg (Wtr 02)

Project No. 04-01-E791 CAPITAL IMPROVEMENT PROJECT
37TH STREET NORTH FIRE HYDRANT RELOCATION PLANS
 37TH STREET NORTH - TYLER ROAD TO RIDGE ROAD

Baughman **Baughman Company, P.A.**
 315 Ellis St. Wichita, KS 67211 P 316-262-7271 F 316-262-0149
 ENGINEERING | SURVEYING | PLANNING | LANDSCAPE ARCHITECTURE

September 2006
 79 OF 146