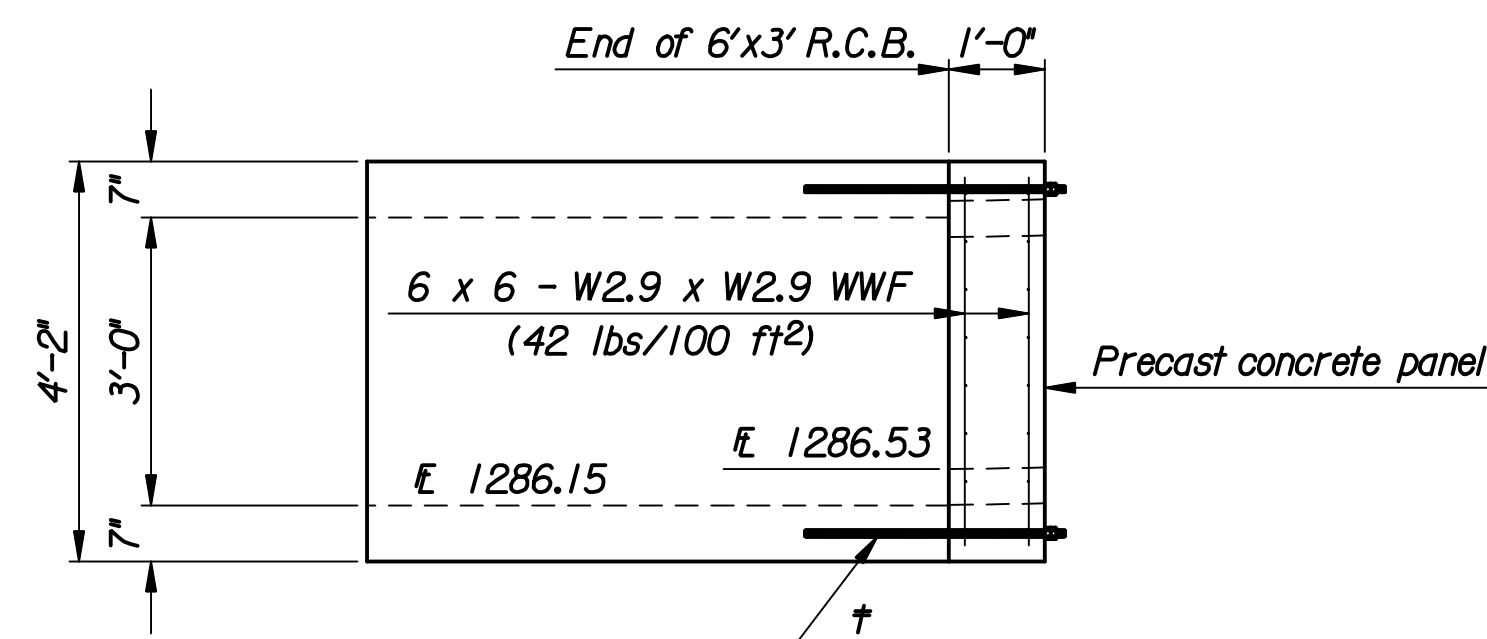
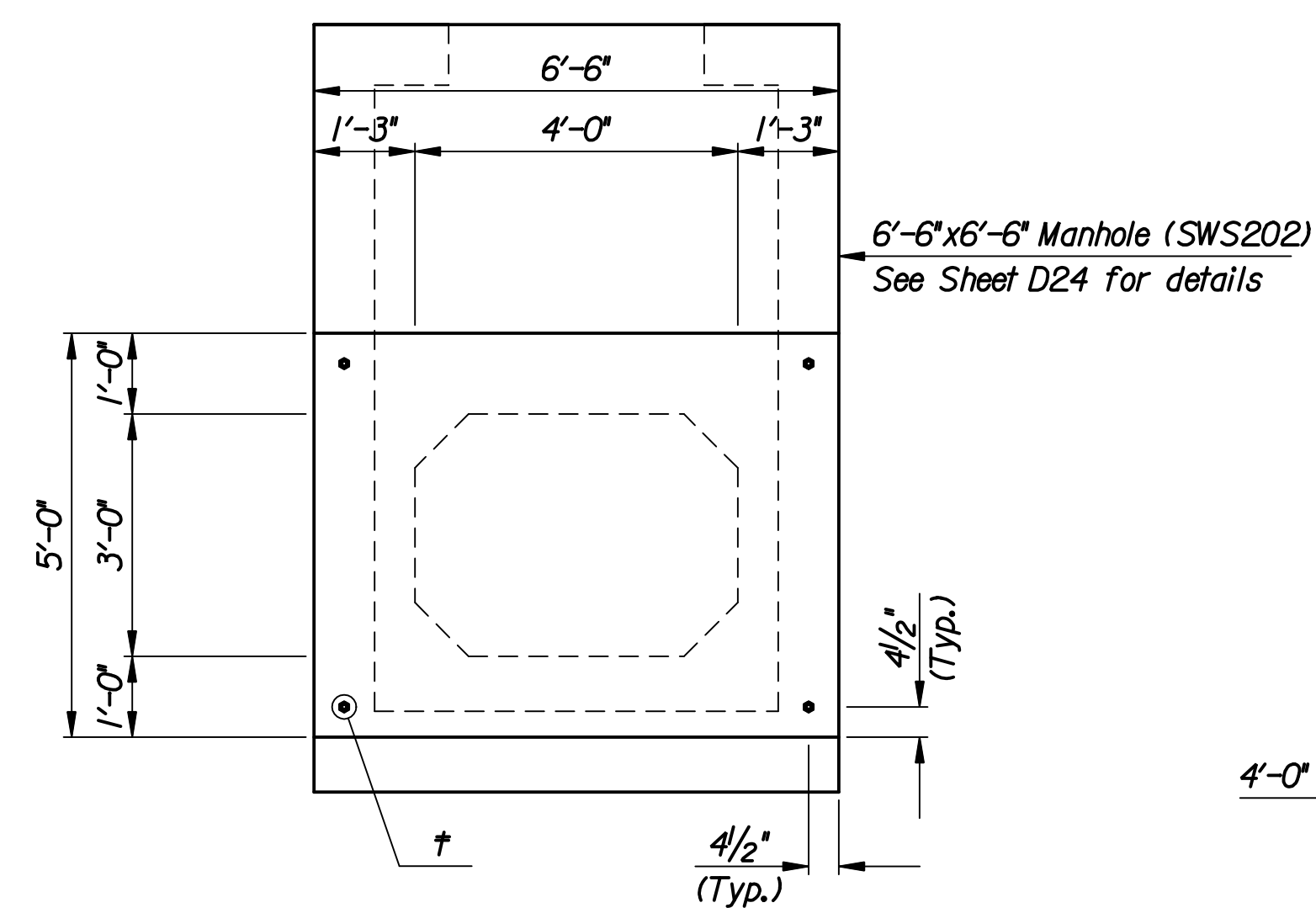


TYPICAL SECTION

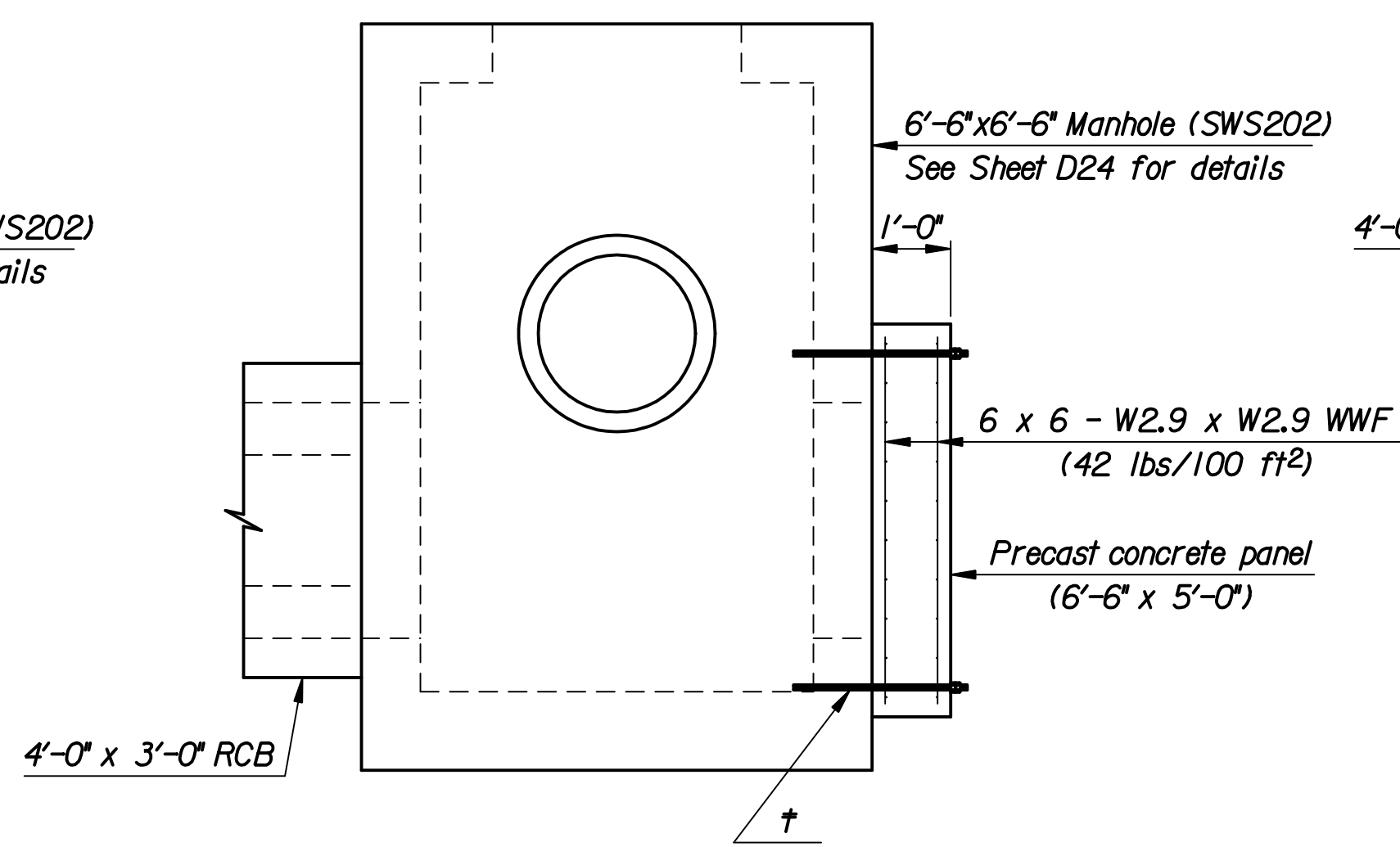
† 3/4" Dia. x 2'-8" All-Thread Rod (ASTM F1554 Grade 55) with Double Heavy Hex Nuts (ASTM A563A). Drill and grout 1'-6" into 6'x3' Precast R.C.B.. Typical each corner.



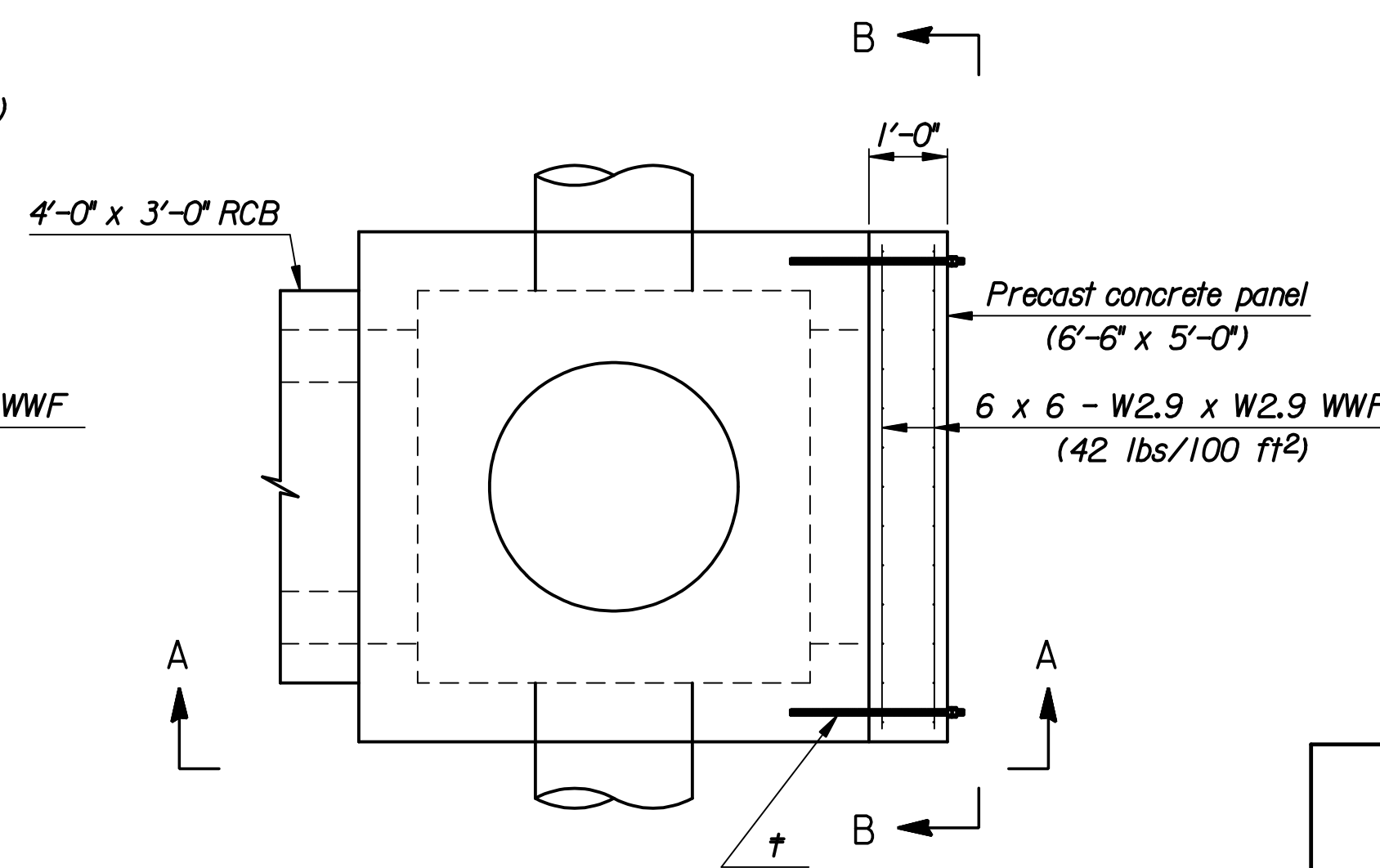
CONSTRUCTION: Construct a concrete plug according to the details depicted or submit an alternate method for approval by the Engineer. The plug shall seal the 6'x3' R.C.B. and have an allowance for the 45°x29° R.C.P.H.E. Construction of the plug will be subsidiary to the construction of the 6'x3' R.C.B.



VIEW B-B



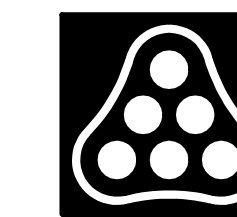
VIEW A-A



PLAN

CONSTRUCTION: Construct a concrete plug according to the details depicted or submit an alternate method for approval by the Engineer. The plug shall seal the formed void for the future 4'x3' R.C.B. in the 6'-6" x 6'-6" Manhole (SWS202). Construction of the plug will be subsidiary to the construction of the 6'-6" x 6'-6" Manhole (SWS202).

† 3/4" Dia. x 2'-2" All-Thread Rod (ASTM F1554 Grade 55) with Double Heavy Hex Nuts (ASTM A563A). Drill and grout 1'-0" into 6'-6"x6'-6" Manhole (SWS 202). Typical each corner.



No.	Revision	By	Date
DOWNTOWN ARENA SWD OUTFALL PHASE 2 - WATERMAN PORTION			
PRECAST CONCRETE PLUGS			
JAMES L. ARMOUR, P.E. - CITY ENGINEER CITY OF WICHITA PROJECT NO. 468-84167 Professional Engineering Consultants, P.A. 303 S. TOPEKA • WICHITA, KANSAS 67202 316-262-2691 • FAX 316-262-3003			
Designed by	MSN	Job No.	32-05493-2-42
Drawn by	MSN	Date	Feb., 2007