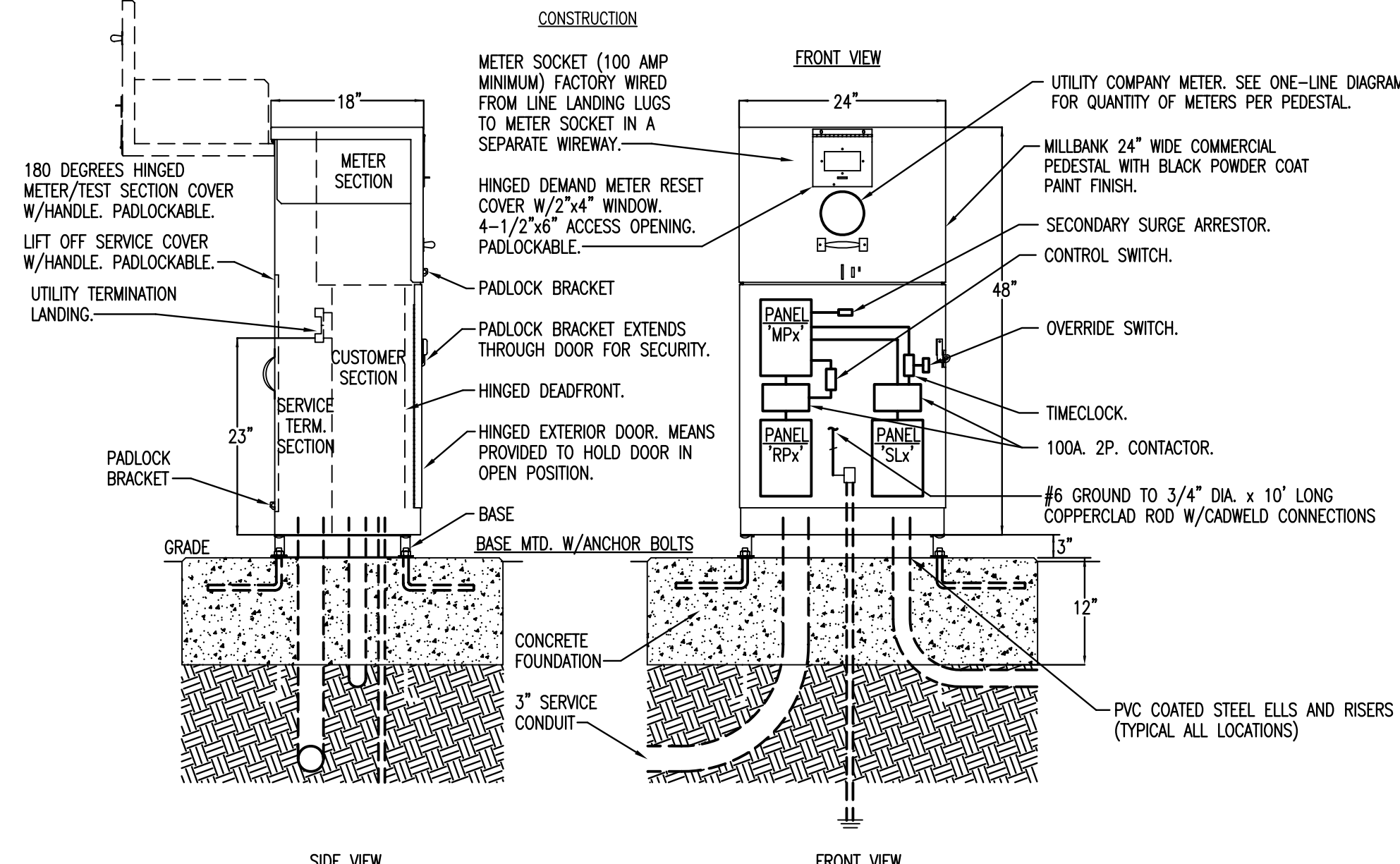


PEDESTAL NOTES:

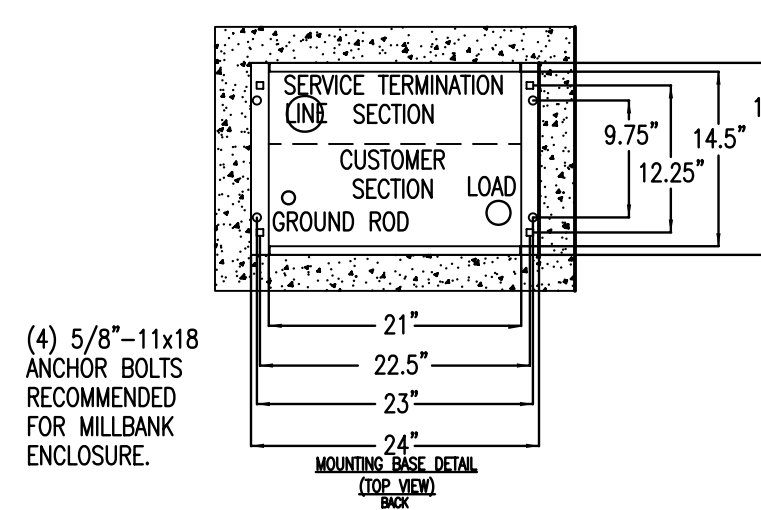
- CONTROL CABINET SHALL BE U/L LISTED "INDUSTRIAL CONTROL PANEL" PER UL 508.
- CONSTRUCTION SHALL BE NEMA 3R.
- PROVIDE 100A METER, SOCKET, AND PANELBOARDS PER NOTES.
- SERVICE EQUIPMENT ENCLOSURE AND METERING EQUIPMENT SHALL MEET THE REQUIREMENTS OF THE SERVING UTILITY. THE METER AREA SHALL HAVE A SEALABLE, LOCKABLE, RAINTIGHT COVER THAT CAN BE REMOVED WITHOUT THE USE OF TOOLS.
- SERVICE EQUIPMENT SHALL BE FACTORY WIRED AND CONFORM TO NEMA STANDARDS.
- THE EXTERIOR DOOR SHALL HAVE PROVISIONS FOR PADLOCKING. THE PADLOCK HOLE SHALL BE A MINIMUM DIAMETER OF 11mm.
- ALL TERMINALS FOR INCOMING SERVICE CONDUCTORS SHALL BE COMPATIBLE WITH EITHER COPPER OR ALUMINUM CONDUCTORS SIZED TO SUIT THE CONDUCTORS SHOWN ON THE PLAN. TERMINAL LUGS SHALL BE COPPER OR TIN-PLATED ALUMINUM. SOLID NEUTRAL TERMINAL STRIP SHALL BE RATED 125A UNLESS OTHERWISE SPECIFIED AND FOR USE WITH COPPER OR ALUMINUM CONDUCTORS. THE TERMINAL SHOULD INCLUDE BUT NOT BE LIMITED TO:
 - INCOMING TERMINALS (LANDING LUGS)
 - NEUTRAL LUGS
 - SOLID NEUTRAL TERMINAL STRIP.
 - TERMINAL STRIPS FOR CONDUCTORS WITHIN THE ENCLOSURE.
- PROVIDE PANELBOARD PER PANELBOARD SCHEDULES. SEE ONE-LINE DIAGRAMS FOR PANEL BOARD QUANTITIES.
- PLUG-IN CIRCUIT BREAKERS MAY BE MOUNTED IN THE VERTICAL OR HORIZONTAL POSITION. CABLE-IN/ CABLE-OUT CIRCUIT BREAKERS SHALL BE MOUNTED IN THE VERTICAL POSITION.
- FASTENERS ON THE EXTERIOR OF THE ENCLOSURE SHALL BE VANDAL RESISTANT AND SHALL NOT BE REMOVABLE FROM THE EXTERIOR. ALL NUTS, BOLTS, SCREWS, WASHERS, AND HINGES SHALL BE STAINLESS STEEL.
- PHENOLIC NAME PLATES SHALL BE PROVIDED AS REQUIRED.
- A PLASTIC COVERED WIRING DIAGRAM SHALL BE ATTACHED TO THE INSIDE OF THE FRONT DOOR.
- FOUNDATION/PAD SHALL EXTEND 18" MINIMUM BEYOND EDGE OF ENCLOSURE.

PAD NOTES:

- THE TOP OF THE PAD SHALL RECEIVE A SMOOTH TROWEL FINISH. THE CORNERS AND EDGES SHALL BE CHAMFERED.
- THE CONCRETE SHALL BE A MINIMUM OF 4,000 LB. MIX.
- CONTRACTOR SHALL EXTEND FORMS DOWN TO AT LEAST 3" BELOW AVERAGE GROUND LINE.
- TOP OF CONDUITS SHALL BE FLUSH WITH TOP OF PAD.
- THE CONDUIT OPENING SHALL BE FREE AND CLEAR OF CONCRETE.
- CONCRETE FILLED PILLARS ARE FORMED BY AUGERING AN 8" DIAMETER HOLE TO A DEPTH OF UNDISTURBED EARTH (MIN. 36"). A SEPARATOR, SUCH AS TAR PAPER, SHOULD BE PLACED BETWEEN THE PILLAR AND THE PAD SO THE PAD CAN BE LEVELLED AT A LATER TIME IF NECESSARY.



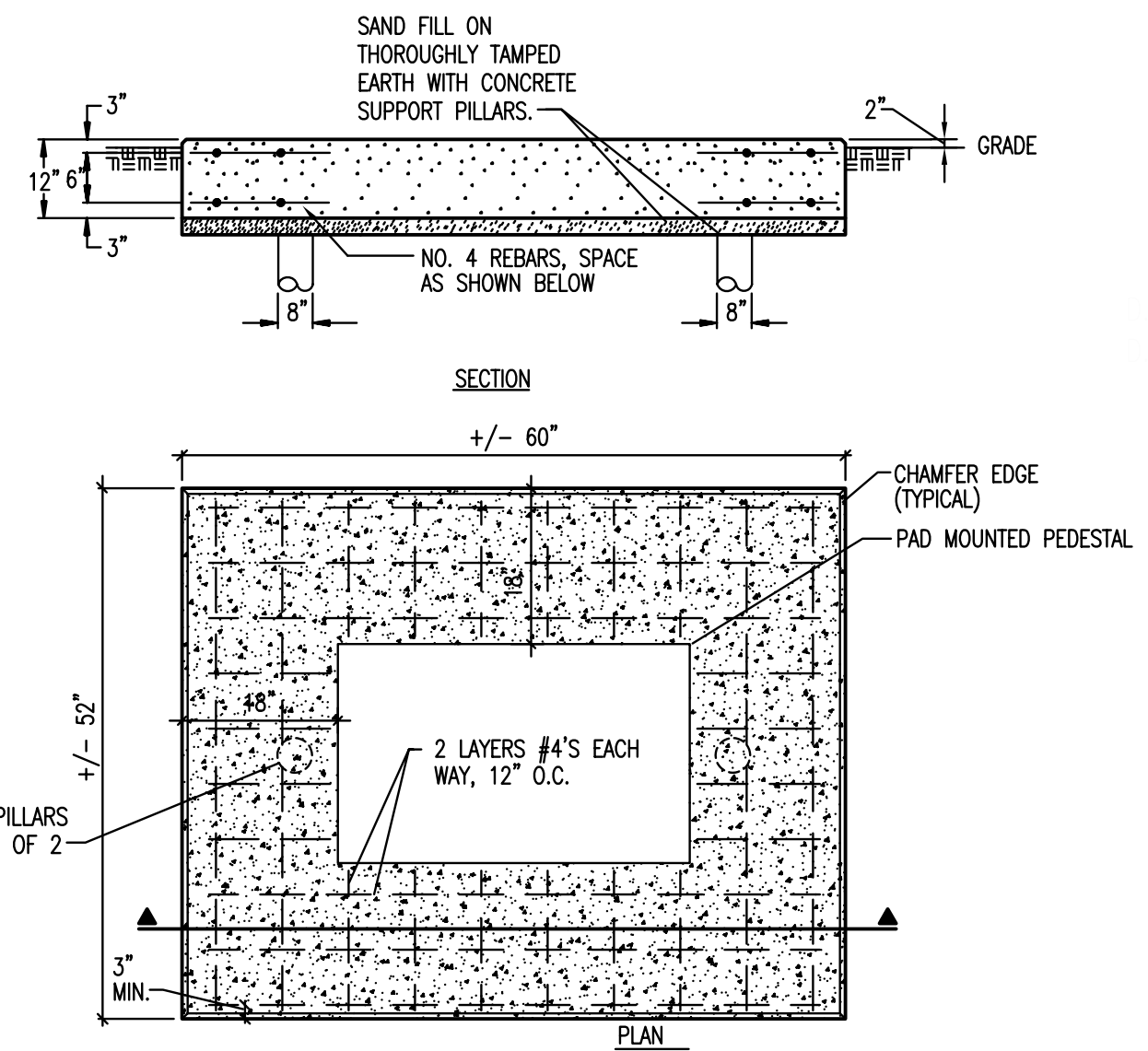
1A PEDESTAL DETAIL
NO SCALE



NOTE:
1. UTILITY METER SHALL BE LOCATED PER WESTAR REQUIREMENTS. VERIFY ALL SERVICE REQUIREMENTS WITH WESTAR.
2. SEE SITE PLANS FOR APPROXIMATE LOCATIONS.

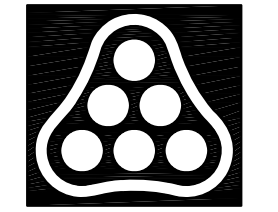
PAD BY CONTRACTOR, VERIFY ALL REQUIREMENTS WITH EQUIPMENT PROVIDED PRIOR TO PLACING CONCRETE PAD.

1B PAD DETAIL
NO SCALE
1 TYPICAL ELECTRICAL SERVICE PEDESTAL DETAIL
NO SCALE VOLATEGE: 240V, 1Ø, 3-WIRE



- NOTE NOT USED.
- NOTE NOT USED.
- STREET LIGHTING POLE. LETTER DESIGNATES POLE/FIXTURE TYPE. SEE POLE DETAIL SHEET AND LIGHTING FIXTURE SCHEDULE FOR ADDITIONAL INFORMATION.
- ELECTRICAL POWER MANHOLE. SEE ELECTRICAL DUCTBANK PLANS FOR EXACT LOCATION AND ADDITIONAL INFORMATION. COMMUNICATION CONDUITS SHALL PASS THROUGH MANHOLE UNBROKEN.
- ELECTRICAL COMMUNICATIONS MANHOLE. SEE ELECTRICAL DUCTBANK PLANS FOR EXACT LOCATION AND ADDITIONAL INFORMATION. POWER CONDUITS SHALL PASS THROUGH MANHOLE UNBROKEN.
- (1) 6" CONDUIT WITH PULL ROPE ROUTED TO ALLEY FOR FUTURE WESTAR USE. CAP CONDUIT AND PROVIDE UTILITY MARKER AT GRADE TO INDICATE END OF CONDUIT.
- (1) 4" CONDUIT WITH PULL ROPE ROUTED TO ALLEY FOR FUTURE COX COMMUNICATIONS CABLE ROUTING. CAP CONDUIT AND PROVIDE UTILITY MARKER AT GRADE TO INDICATE END OF CONDUIT.
- (1) 2" PVC CONDUIT WITH PULL ROPE FOR STREET LIGHTING CIRCUITING.
- (1) 2" RGS CONDUIT FOR POLE MOUNTED RECEPTACLE CIRCUITING.
- CONTINUE (1) 2" RGS CONDUIT THROUGH ALLEY AND TO ENCLOSURE FOR RECEPTACLE CIRCUITS TERMINATION. SEE SHEET R43 FOR ALLEY PAVEMENT CUT & PATCH DETAIL.
- (6) 6" (POWER) AND (6) 4" (COMM.) DUCTBANK SEE ELECTRICAL DUCTBANK PLAN DETAILS.
- (1) 2" RGS CONDUIT WITH PULL ROPE FOR STREET LIGHTING CIRCUITING. SEE TRAFFIC SIGNAL PLANS.
- (1) 2" RGS CONDUIT FOR JOINT USE POLE LIGHTS AT MARKET/WATERMAN INTERSECTION.

Saved: 02-27-2007 3:17:10 PM by WAN
 Plotted: 02-27-2007 03:16:03 PM by WAN
 E:\2006\0623\06231-SHEET.E2



No.	Revision	By	Date
WATERMAN STREET			
ELEC. STREETScape PLAN			
STA. 102+00 TO STA. 108+00			
JAMES L. ARMOUR, P.E.—CITY ENGINEER CITY OF WICHITA PROJECT NO. 468-84167			
Professional Engineering Consultants, P.A.			
303 S. TOPKA • WICHITA, KANSAS 67202 316-262-2691 • FAX 316-262-3003			
Designed by	SMS	Job No.	06237
Drawn by	WAN	Date	February, 2007
			Sht. E2 of 8