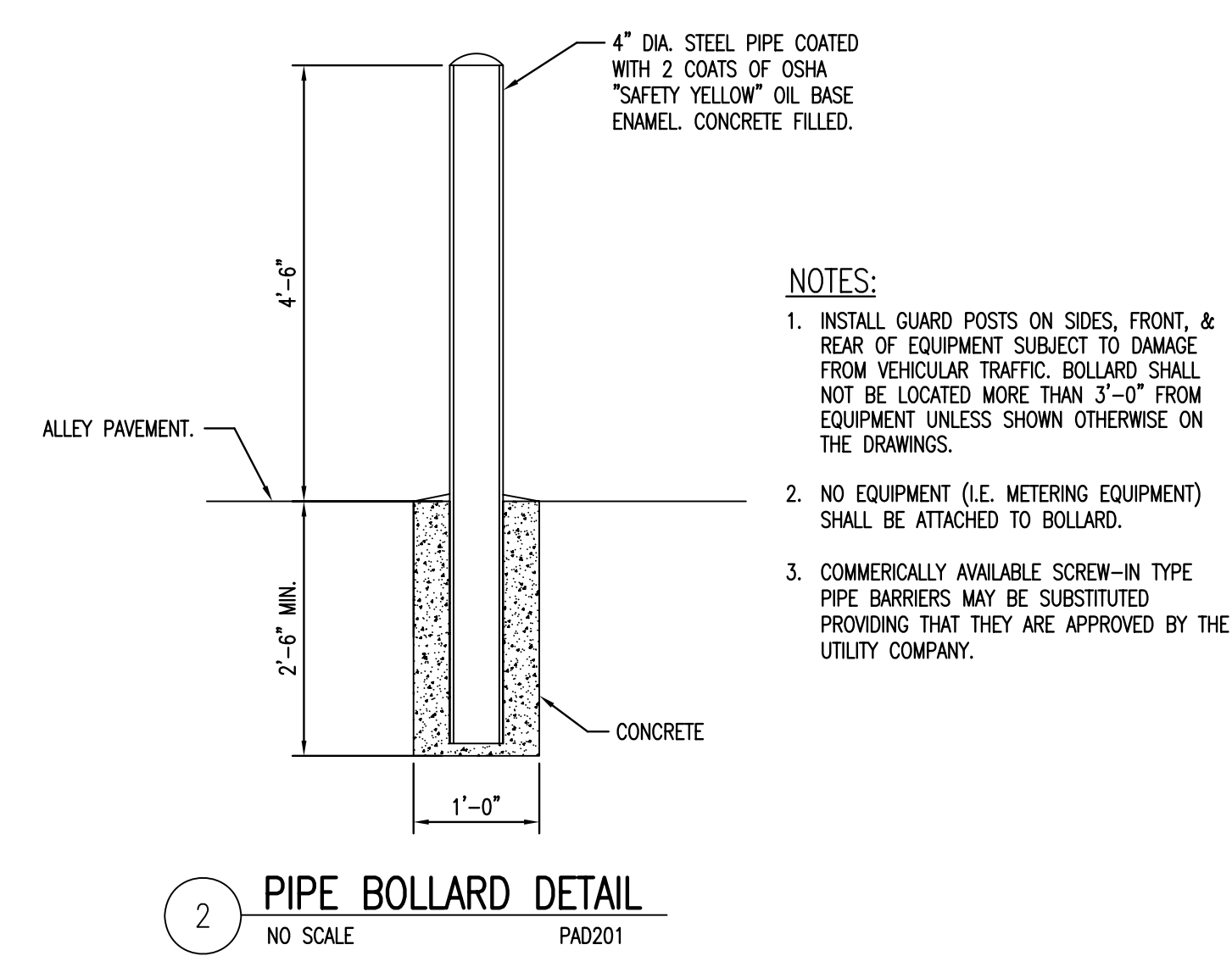
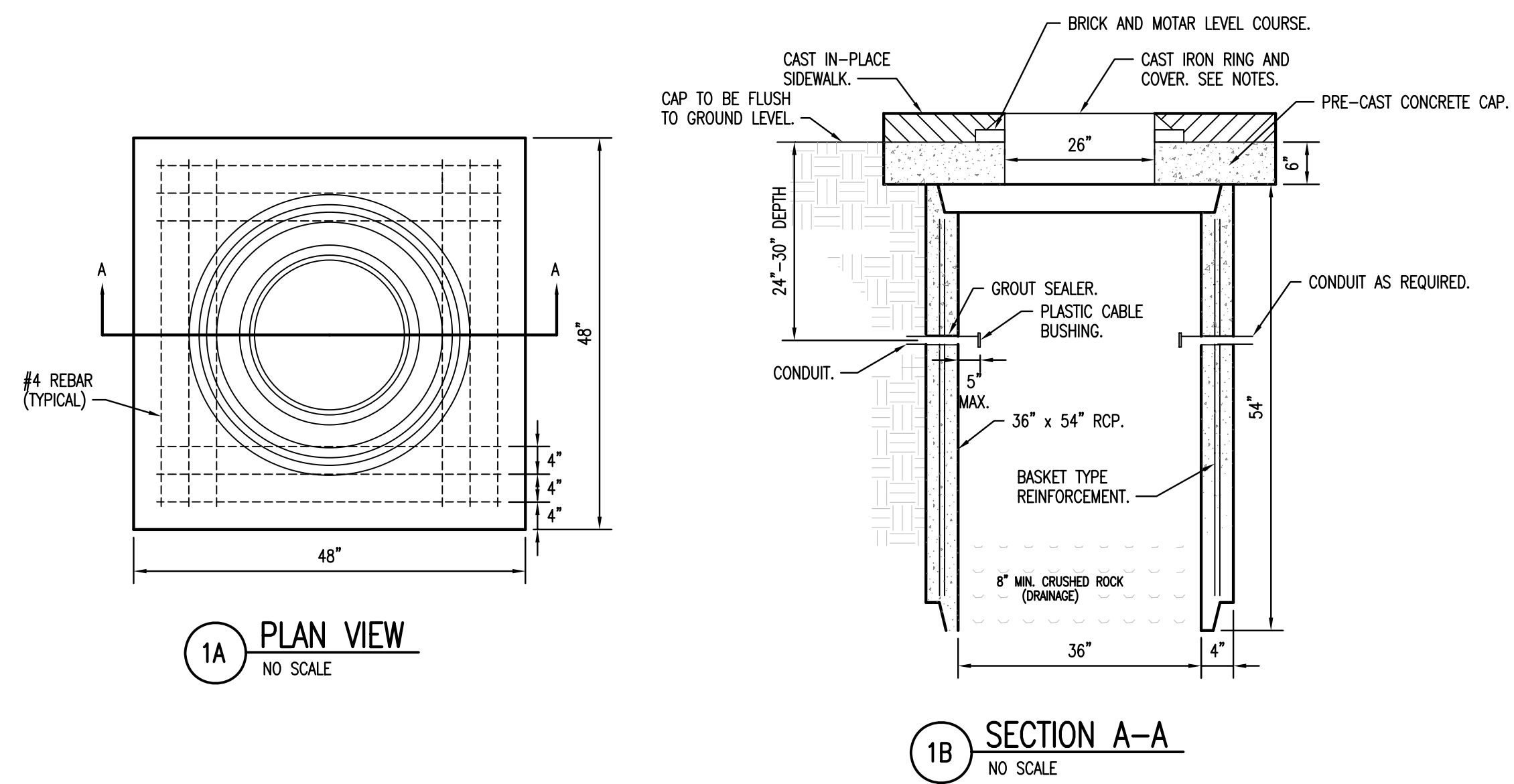


Scale: 1"=20'



- NOTES:**
1. INSTALL GUARD POSTS ON SIDES, FRONT, & REAR OF EQUIPMENT SUBJECT TO DAMAGE FROM VEHICULAR TRAFFIC. BOLLARD SHALL NOT BE LOCATED MORE THAN 3'-0" FROM EQUIPMENT UNLESS SHOWN OTHERWISE ON THE DRAWINGS.
 2. NO EQUIPMENT (I.E. METERING EQUIPMENT) SHALL BE ATTACHED TO BOLLARD.
 3. COMMERCIALY AVAILABLE SCREW-IN TYPE PIPE BARRIERS MAY BE SUBSTITUTED PROVIDING THAT THEY ARE APPROVED BY THE UTILITY COMPANY.

- JUNCTION BOX NOTES:**
1. 36" I.D. x 54" RCP WITH 6" CAP.
 2. CAST IRON RING AND COVER SHALL BE NEENAH R773 OR APPROVED EQUAL.
 3. CONDUIT CONNECTION TO BE FLUSH TO WITHIN 5" OF THE INSIDE WALL. CONDUIT TO DRAIN INTO SERVICE BOX OR AS DIRECTED BY ENGINEER.
 4. CONDUIT CONNECTIONS TO SERVICE BOX SHALL BE TERMINATED WITH PLASTIC CABLE BUSHING.
 5. CONDUIT SHALL BE SEALED WITH APPROVED SEALER AT INSIDE WALL FACE.
 6. ALL JUNCTION BOXES TO HAVE 8" OF CRUSHED ROCK.
 7. TRENCHING DEPTH TO BE 30" MINIMUM WITH ROCK AND STUBBLE FREE BACKFILL TO SERVE AS BEDDING MATERIAL. MAINTAIN MINIMUM CONDUIT DEPTH IN TRENCH.
 8. BACKFILL TO BE COMPACTED IN 6" LOOSE LIFTS BY HAND OR MECHANICAL TAMPING TO A 95% STANDARD DENSITY.
 9. SEE PLANS FOR CONDUIT SIZES AND TYPES.

1 TYPICAL GROUND MOUNTED JUNCTION BOX DETAIL
NO SCALE

- KEYED NOTES:**
- 1 NOTE NOT USED.
 - 2 NOTE NOT USED.
 - 3 STREET LIGHTING POLE. LETTER DESIGNATES POLE/FIXTURE TYPE. SEE POLE DETAIL SHEET AND LIGHTING FIXTURE SCHEDULE FOR ADDITIONAL INFORMATION.
 - 4 ELECTRICAL POWER MANHOLE. SEE ELECTRICAL DUCTBANK PLANS FOR EXACT LOCATION AND ADDITIONAL INFORMATION. COMMUNICATION CONDUITS SHALL PASS THROUGH MANHOLE UNBROKEN.
 - 5 ELECTRICAL COMMUNICATIONS MANHOLE. SEE ELECTRICAL DUCTBANK PLANS FOR EXACT LOCATION AND ADDITIONAL INFORMATION. POWER CONDUITS SHALL PASS THROUGH MANHOLE UNBROKEN.
 - 6 (1) 6" CONDUIT WITH PULL ROPE ROUTED TO ALLEY FOR FUTURE WESTAR USE. CAP CONDUIT AND PROVIDE UTILITY MARKER AT GRADE TO INDICATE END OF CONDUIT.
 - 7 (1) 4" CONDUIT WITH PULL ROPE ROUTED TO ALLEY FOR FUTURE COX COMMUNICATIONS CABLE ROUTING. CAP CONDUIT AND PROVIDE UTILITY MARKER AT GRADE TO INDICATE END OF CONDUIT.
 - 8 NOTE NOT USED.
 - 9 NOTE NOT USED.
 - 10 NOTE NOT USED.
 - 11 (6) 6"C. (POWER) AND (6) 4"C. (COMM.) DUCTBANK SEE ELECTRICAL DUCTBANK PLAN DETAILS.
 - 12 (1) 2" RGS CONDUIT WITH PULL ROPE FOR STREET LIGHTING CIRCUITING. SEE TRAFFIC SIGNAL PLANS.
 - 13 (1) 2" RGS CONDUIT FOR STREET LIGHTING CIRCUITING AND POLE MOUNTED RECEPTACLE CIRCUITING.
 - 14 (1) 2" RGS CONDUIT FOR JOINT USE POLE LIGHTS AT ST. FRANCIS/WATERMAN CROSSWALK.

Saved: 02-27-2007 3:44:16 PM by WAN
 Plot: 02-27-2007 10:24:47 PM by WAN
 E:\2006\06237\06237-SHEET.E04

No.	Revision	By	Date
WATERMAN STREET			
ELEC. STREETScape PLAN			
STA. 114+00 TO STA. 120+00			
JAMES L. ARMOUR, P.E.—CITY ENGINEER CITY OF WICHITA PROJECT NO. 468-84167			
Professional Engineering Consultants, P.A. 303 S. TOPEKA • WICHITA, KANSAS 67202 316-262-2691 • FAX 316-262-3003			
Designed by	SMS	Job No.	06237
Drawn by	WAN	Date	February, 2007
			Sht. E4 of 8