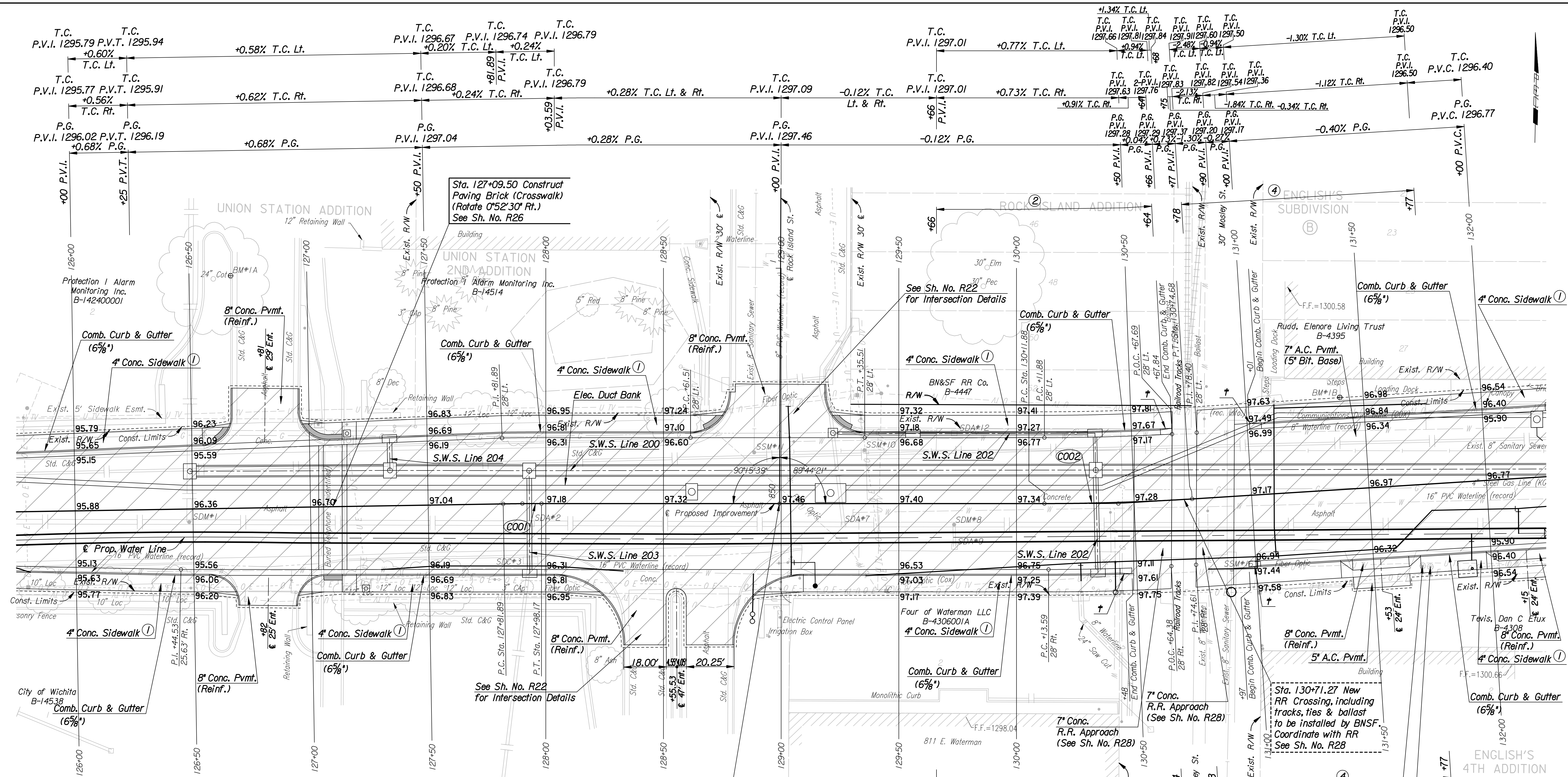


DSNR: M/JW OPER: DRP SCALE: 1"=20'
 I:/2006/06237/PLAN/06237-000-FL126.DGN 7-5-2006 11:30:00 LAST REV: 2-23-2007 BY: drp



- Utilities**
- Gas Kansas Gas Service
 - Power Westar Energy
 - Sanitary Sewer Wichita Water and Sanitary Sewer
 - Storm Water Sewer Wichita Water and Sanitary Sewer
 - Telephone AT&T
 - Television Cox Communication
 - Water Wichita Water and Sanitary Sewer

REMOVAL OF EXISTING STRUCTURES *		
STATION	SIDE	ITEM
126+31	Lt.	12' Clearance Sign
126+39	Rt.	No Parking Sign
126+47	Lt.	No Parking Sign
126+48	Rt.	SDM 1, 2 4" CMP (N) & 2 4" VCP (E)
126+64	Lt.	Stop Sign
127+17	Lt.	Traffic Signal Junction Box
127+93	Rt.	SDC 3 & 15" RCP (N)
127+94	Rt.	SDA 2 & 2 4" VCP (E)
127+80	Rt.	No Parking Sign
128+25	Lt.	No Parking Sign
128+35	Lt.	No Parking Sign
128+43	Lt.	Stop Sign

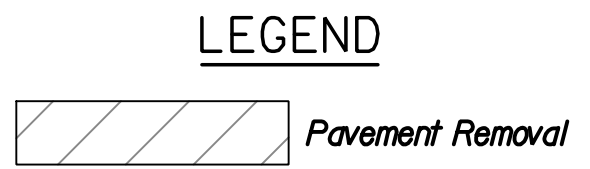
* For Information Only

REMOVAL OF EXISTING STRUCTURES *		
STATION	SIDE	ITEM
128+89	Lt.	Ad Just SSM 11
129+27	Rt.	SDA 7, 15" RCP (N) & 2 4" VCP (E)
129+35	Lt.	Ad Just SSM 10
129+35	Rt.	Street Sign
129+74	Rt.	SDM 8 & 2 4" VCP (E)
129+74	Rt.	SDA 9 & 12" RCP (N)
129+74	Lt.	SDA 12
130+60	Rt.	Street Sign & R.R. Cross Buck
130+75	Lt.	Street Sign & R.R. Cross Buck
130+75	Rt.	Stop Sign
130+90	Rt.	Ad Just SSM 16

* For Information Only

Sta. 128+99.30 & Waterman St. = Sta. 850+00.00 & Rock Island St.
 SW Cor. Sec. 22, 127S, R1E

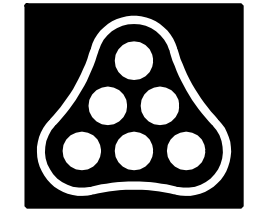
† 5' Transition from Combined Curb & Gutter (6 5/8%) to No Curb.



- See Sh. L1-L7 for Sidewalk Jointing Patterns
- Transition Cross Slope from -3/8"/ft. at Sta. 129+66 to +0.12% at Sta. 130+64.
- Transition Cross Slope from -3/8"/ft. at Sta. 129+66 to -0.12% at Sta. 130+64.
- Transition Cross Slope from -0.12% at Sta. 130+78 to -3/8"/ft. at Sta. 131+77.
- Transition Cross Slope from +0.12% at Sta. 130+78 to -3/8"/ft. at Sta. 131+77.

BM#1A Chis. "W" top of curb of roadway along W side of building at Waterman St., opposite of 20' Cottonwood, 73' N of N curb line of Waterman St. Elev. = 1297.89

BM#1B Chis. "W" on footing level with ground at SW corner of loading dock, located on S side of building at 906 E Waterman St. 39.14' Lt. & Sta. 131+40.02 Elev. = 1296.64



WATERMAN STREET

PLAN
 STA. 126+00 TO STA. 132+00

JAMES L. ARMOUR, P.E.—CITY ENGINEER
 CITY OF WICHITA PROJECT NO. 468-84167

Professional Engineering Consultants, P.A.
 303 S. TOPKA • WICHITA, KANSAS 67202
 316-262-2691 • FAX 316-262-3003

Designed by M/JW Job No. 06237
 Drawn by DRP Date Feb., 2007 Sht. R9 of R111