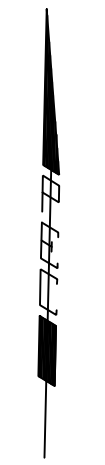
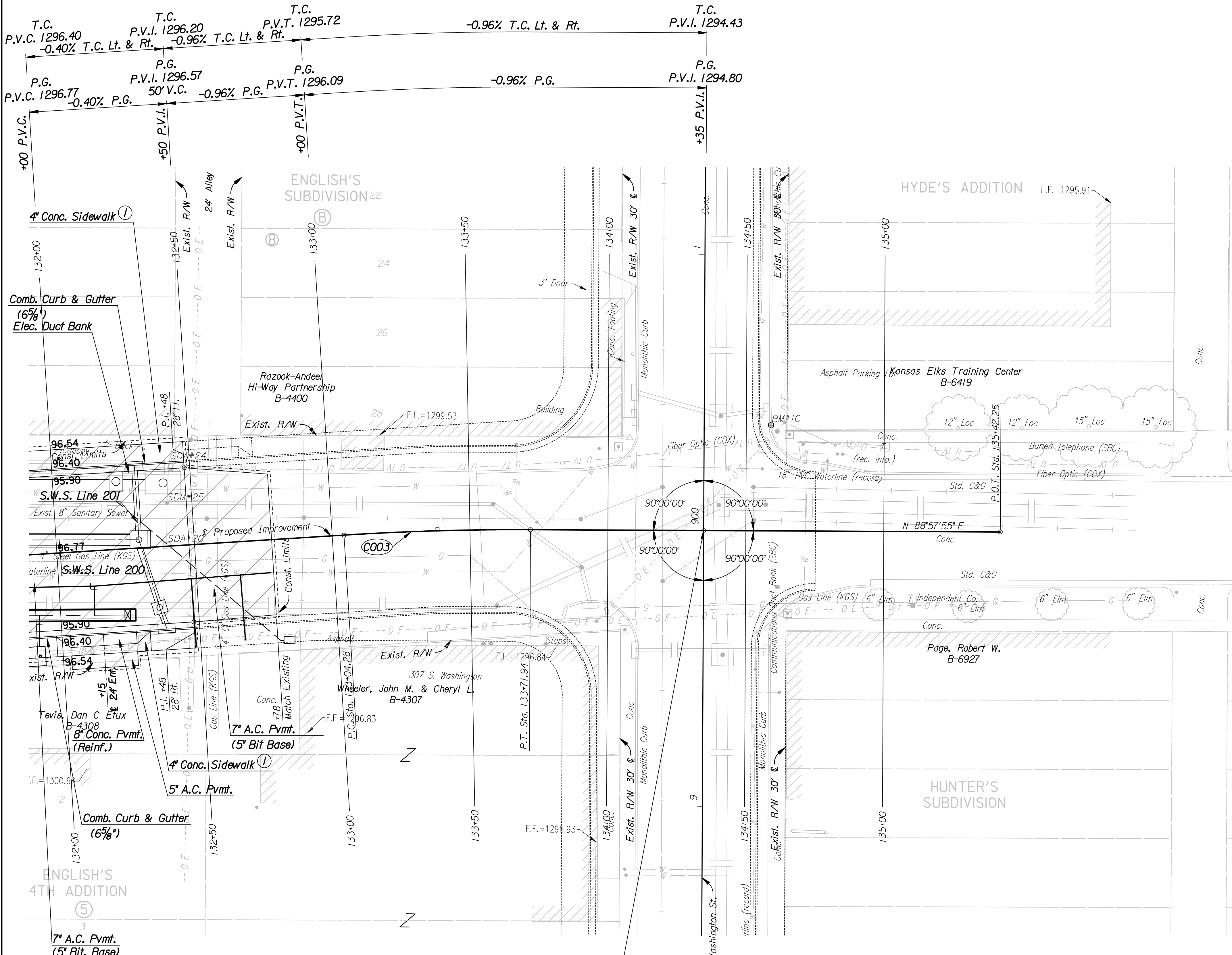


P.O.T. @ Sta. 135+42.25
I. No Monument Set



DSNR: MJW OPER: DRP SCALE: 1"=20'
 I:/2006/06237/PLAN/06237-000-PL132.DGN 7-10-2006 1500:00 LAST REV: 10-12-2006 BY: drp

Sta. 134+34.72 @ Waterman St. =
Sta. 900+00.00 @ Washington St.

① See Sh. LI-L7 for Sidewalk Jointing Patterns

LEGEND



- Utilities**
- Gas Kansas Gas Service
 - Power Westar Energy
 - Sanitary Sewer Wichita Water and Sanitary Sewer
 - Storm Water Sewer Wichita Water and Sanitary Sewer
 - Telephone AT&T
 - Television Cox Communication
 - Water Wichita Water and Sanitary Sewer

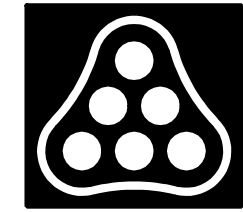
REMOVAL OF EXISTING STRUCTURES *		
STATION	SIDE	ITEM
132+40	Lt.	SDA 20 & 8" VCP (N)
132+41	Lt.	SDM 25 & 8" VCP (N)
132+43	Lt.	SDA 24 & 8" CIP (N)

* For Information Only

BM*1B Chis. "CD" on footing level with ground at SW corner of loading dock, located on S side of building at 906 E Waterman St. 39.14' Lt. @ Sta. 131+40.02 Elev. = 1296.64

BM*1C Chis. "CD" on top of curb at N end of curb return at NE corner of Waterman St. and Washington St. 38.35' Lt. @ Sta. 134+58.94 Elev. = 1294.95

- SW 1/4 Cor. Sec. 21, T27S, R1E
1. Found Chis. "4"
 2. N 1,683,062.7640 E 1,351,972.7189
 3. @ Sta. 134+04.72
 4. Chis. "4" W curb Washington St. 47.41' W
 5. High edge W curb N. Bd. Washington St. 0.37' W
 6. Chis. "4" S Face NE pier US-54 bridge 52.40' ENE
 7. Chis. "4" at face E walk Washington St. at N Face N pier E. BD. bridge 80.92' SE



No.	Revision	By	Date
WATERMAN STREET			
PLAN			
STA. 132+00 TO STA. 135+42.25			
JAMES L. ARMOUR, P.E. - CITY ENGINEER CITY OF WICHITA PROJECT NO. 468-84167			
Professional Engineering Consultants, P.A. 303 S. TOPEKA • WICHITA, KANSAS 67202 316-262-2691 • FAX 316-262-3003			
Designed by	MJW	Job No.	06237
Drawn by	DRP	Date	Feb., 2007
			Sht. R10 of R111