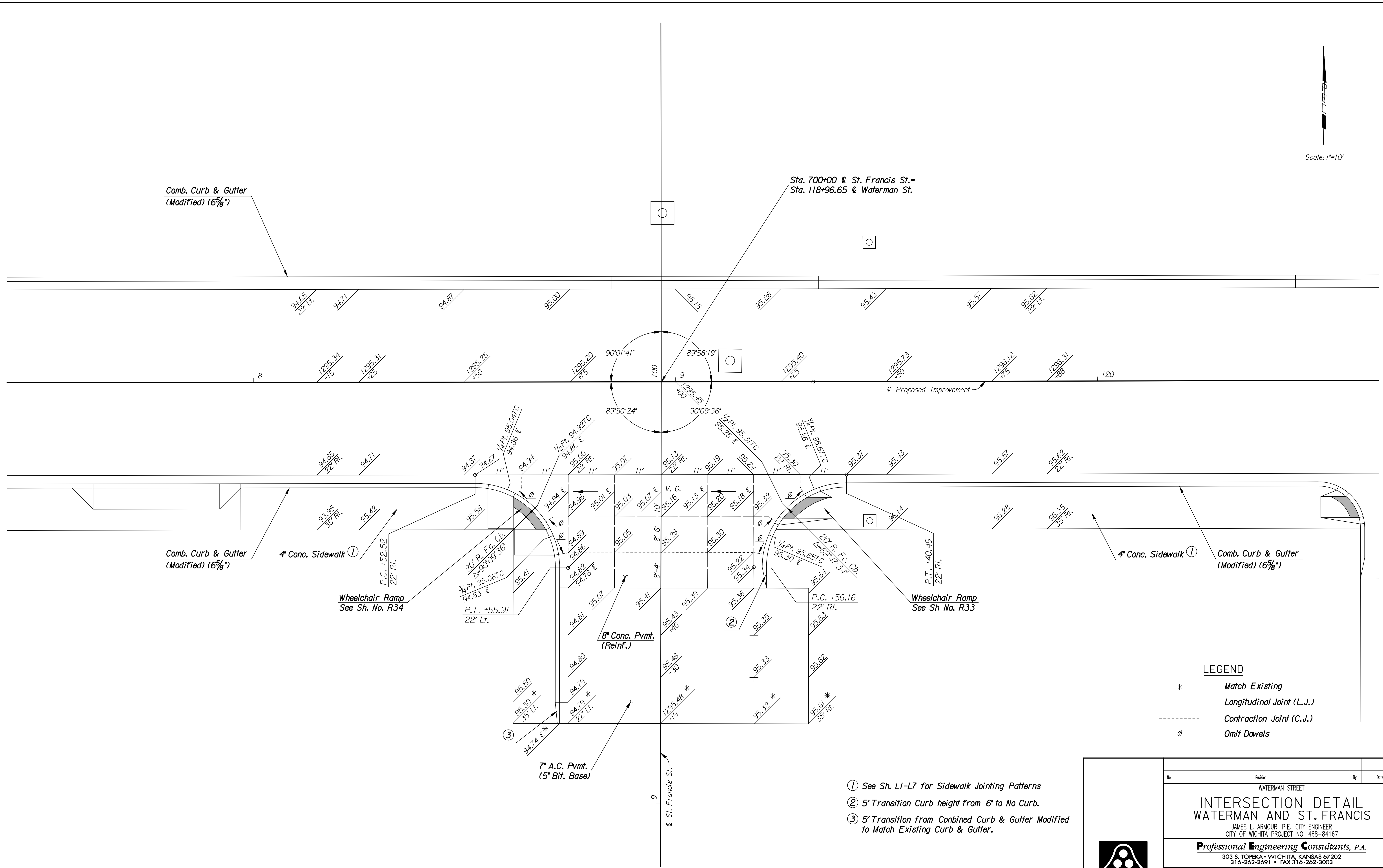


Scale: 1"=10'



Comb. Curb & Gutter  
(Modified) (6 5/8")

Sta. 700+00 @ St. Francis St. =  
Sta. 118+96.65 @ Waterman St.

Comb. Curb & Gutter  
(Modified) (6 5/8")

Comb. Curb & Gutter  
(Modified) (6 5/8")

4' Conc. Sidewalk ①

4' Conc. Sidewalk ①

Wheelchair Ramp  
See Sh. No. R34

Wheelchair Ramp  
See Sh. No. R33

8' Conc. Pvmf.  
(Reinf.)

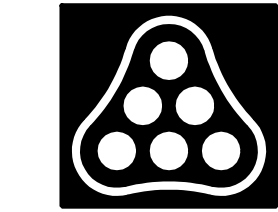
7' A.C. Pvmf.  
(5' Bit. Base)

**LEGEND**

- \* Match Existing
- Longitudinal Joint (L.J.)
- - - Contraction Joint (C.J.)
- ∅ Omit Dowels

- ① See Sh. LI-L7 for Sidewalk Jointing Patterns
- ② 5' Transition Curb height from 6" to No Curb.
- ③ 5' Transition from Combined Curb & Gutter Modified to Match Existing Curb & Gutter.

DSNR: MJW OPER: DRP SCALE: 1"=10' I:\2006\06237\INTERSECTION\06237-000-INTDITL\FRANCIS.DGN LAST REV: 2-24-2007 BY: DRP



No.	Revision	By	Date
WATERMAN STREET <b>INTERSECTION DETAIL</b> <b>WATERMAN AND ST. FRANCIS</b> JAMES L. ARMOUR, P.E.—CITY ENGINEER CITY OF WICHITA PROJECT NO. 468-84167 <b>Professional Engineering Consultants, P.A.</b> 303 S. TOPEKA • WICHITA, KANSAS 67202 316-262-2691 • FAX 316-262-3003			
Designed by	MJW	Job No.	06237
Drawn by	DRP	Date	Feb., 2007
			Sht. R20 of R111