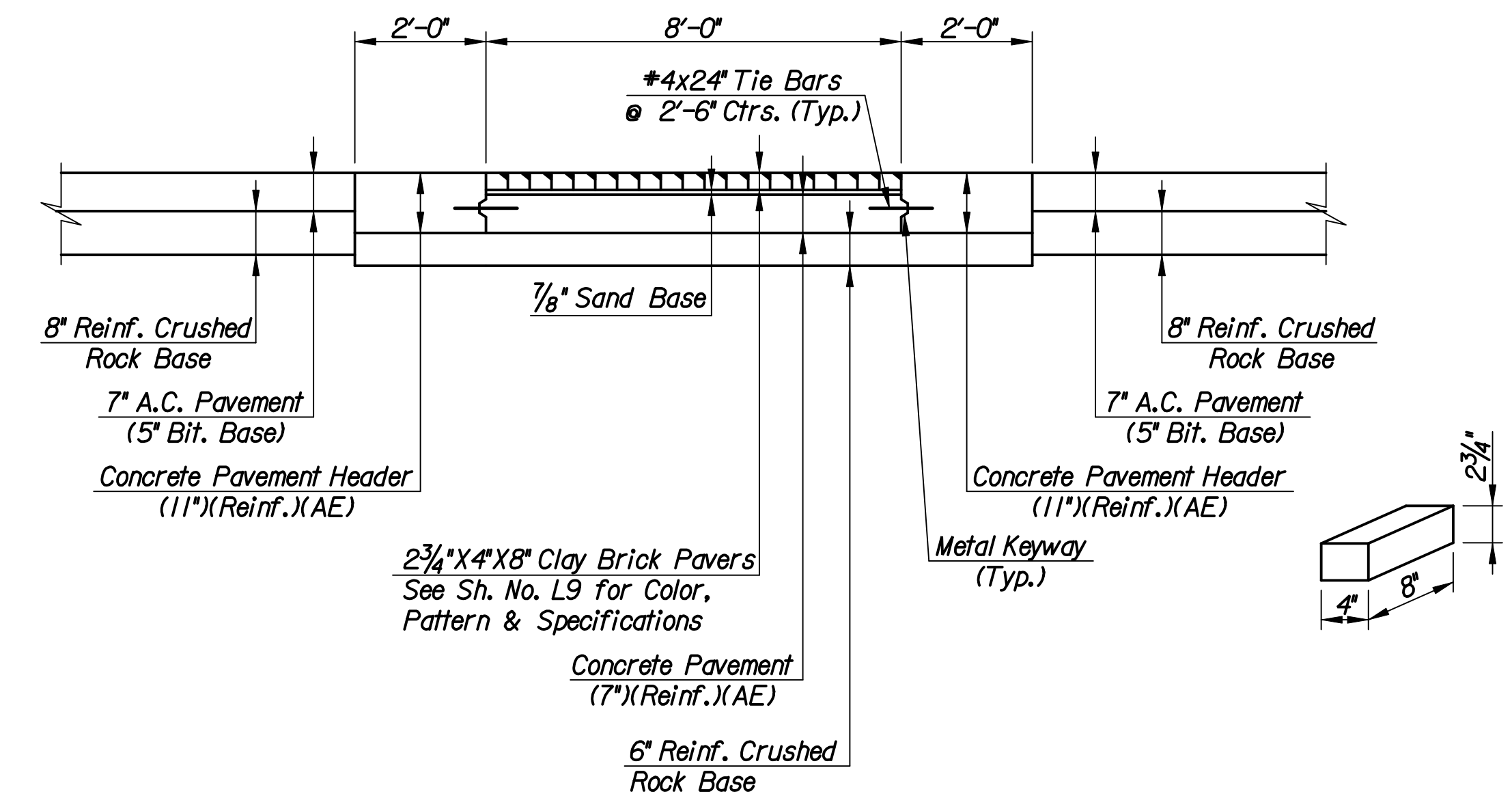
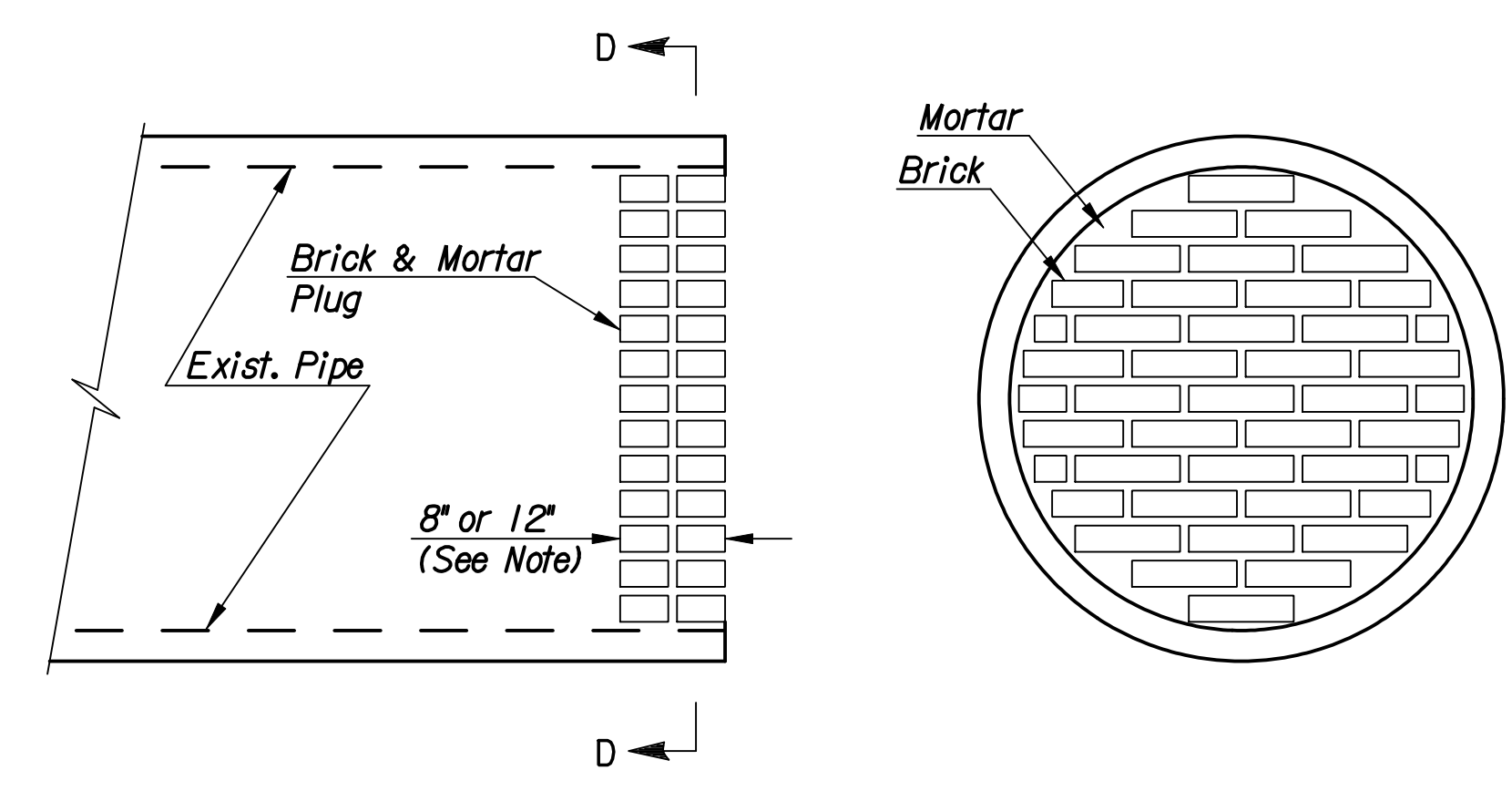


CONCRETE SIDEWALK FLUME DETAIL
Sta. 108+98

① No Curb Thru Sidewalk Flume Opening. Retain ϵ of Gutter. Paid for as Combined Curb & Gutter (6 5/8").



CROSSWALK BRICK PAVER DETAIL
(Sta. 127+09.50)



PIPE PLUGGING DETAIL

NOTE: PIPE PLUGS SHALL BE CONSTRUCTED OF BRICK MASONRY, WITH CONSTRUCTION REQUIREMENTS AND MATERIALS CONFORMING TO THE SAME REQUIREMENTS AS SPECIFIED FOR MANHOLE CONSTRUCTION ON SH. NO. 13. PIPES HAVING DIAMETERS OF 18" OR SMALLER SHALL BE PLUGGED WITH 8" THICK PLUGS. PIPES HAVING DIAMETERS LARGER THAN 18" SHALL BE PLUGGED WITH 12" THICK PLUGS. THE CONSTRUCTION OF PIPE PLUGS SHALL NOT BE PAID FOR DIRECTLY, BUT SHALL BE CONSIDERED SUBSIDIARY.

DSNR: MJW OPER: DRP SCALE: I:/2006/06237/DETAILS/06237-000-MISCDTL.DGN LAST REV: 2-24-2007 BY: DRP

No.	Revision	By	Date
WATERMAN STREET			
MISCELLANEOUS DETAILS			
JAMES L. ARMOUR, P.E. - CITY ENGINEER CITY OF WICHITA PROJECT NO. 468-84167			
Professional Engineering Consultants, P.A. 303 S. TOPEKA • WICHITA, KANSAS 67202 316-262-2691 • FAX 316-262-3003			
Designed by	MJW	Job No.	06237
Drawn by	DRP	Date	Feb., 2007
			Sht. R26 of R111