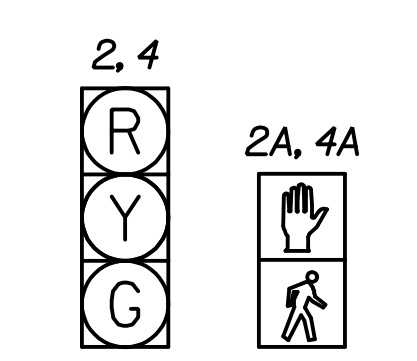
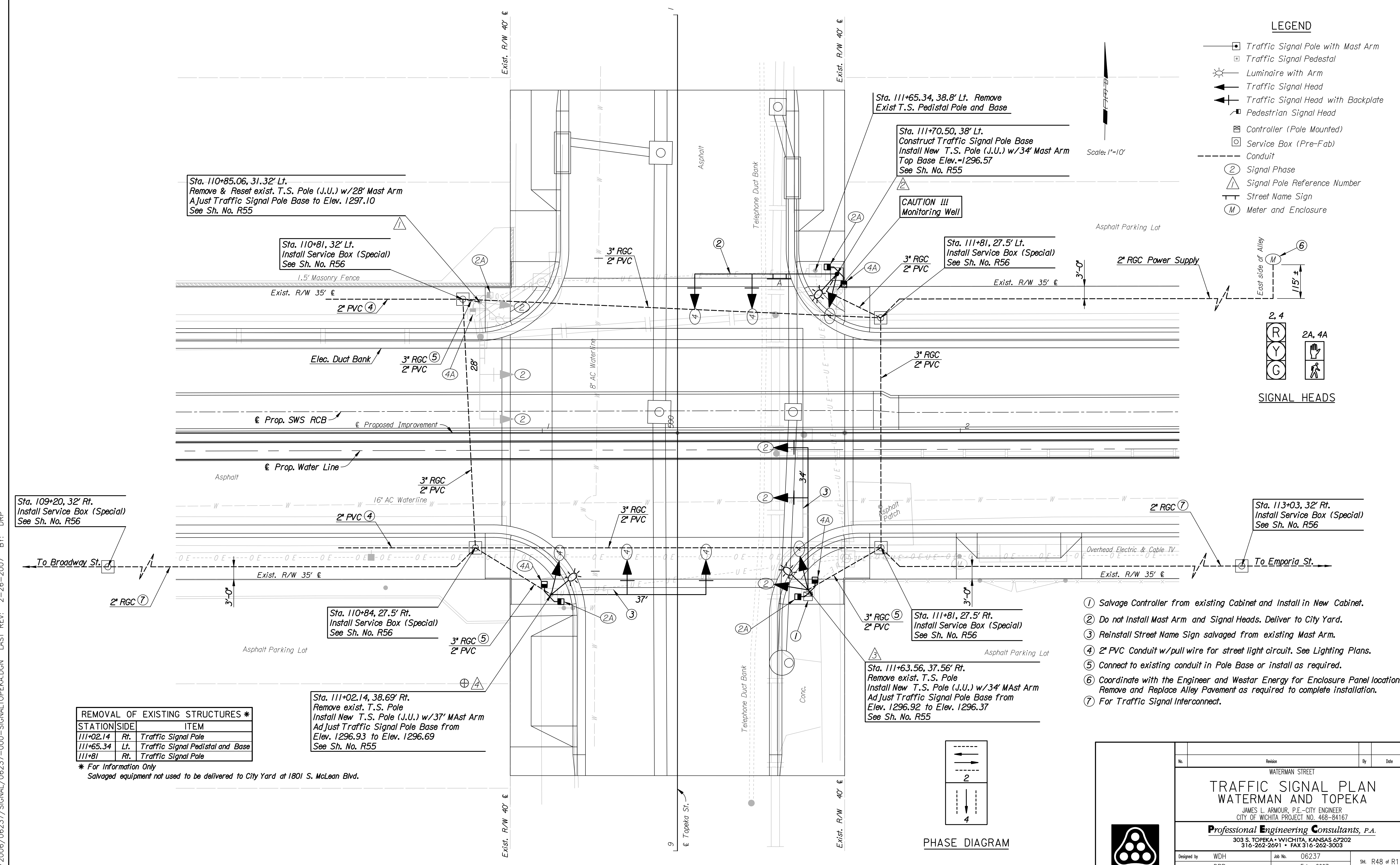


DSNR: M/JW OPER: DRP SCALE: 1"=10'  
 I:/2006/06237/SIGNAL/06237-000-SIGNALTOPEKA.DGN LAST REV: 2-26-2007 BY: DRP

**LEGEND**

- ☐ Traffic Signal Pole with Mast Arm
- ☐ Traffic Signal Pedestal
- ☀ Luminaire with Arm
- ← Traffic Signal Head
- ←+ Traffic Signal Head with Backplate
- ⊓ Pedestrian Signal Head
- ☒ Controller (Pole Mounted)
- ☐ Service Box (Pre-Fab)
- Conduit
- ② Signal Phase
- △ Signal Pole Reference Number
- ⊥ Street Name Sign
- ⊙ Meter and Enclosure

Scale: 1"=10'

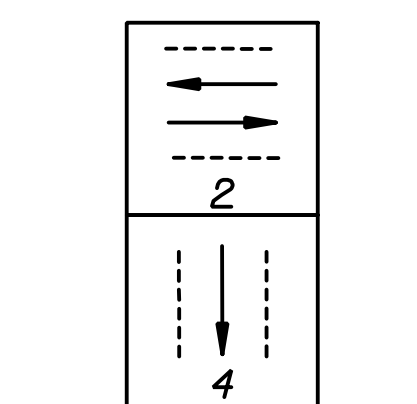


**SIGNAL HEADS**

- ① Salvage Controller from existing Cabinet and Install in New Cabinet.
- ② Do not Install Mast Arm and Signal Heads. Deliver to City Yard.
- ③ Reinstall Street Name Sign salvaged From existing Mast Arm.
- ④ 2" PVC Conduit w/pull wire for street light circuit. See Lighting Plans.
- ⑤ Connect to existing conduit in Pole Base or install as required.
- ⑥ Coordinate with the Engineer and Westar Energy for Enclosure Panel location. Remove and Replace Alley Pavement as required to complete installation.
- ⑦ For Traffic Signal Interconnect.

REMOVAL OF EXISTING STRUCTURES *		
STATION	SIDE	ITEM
111+02.14	Rt.	Traffic Signal Pole
111+65.34	Lt.	Traffic Signal Pedistal and Base
111+81	Rt.	Traffic Signal Pole

\* For Information Only  
 Salvaged equipment not used to be delivered to City Yard at 1801 S. McLean Blvd.



**PHASE DIAGRAM**

Revision		By		Date	
WATERMAN STREET					
<b>TRAFFIC SIGNAL PLAN</b>					
<b>WATERMAN AND TOPEKA</b>					
JAMES L. ARMOUR, P.E.—CITY ENGINEER CITY OF WICHITA PROJECT NO. 468-84167					
<b>Professional Engineering Consultants, P.A.</b>					
303 S. TOPEKA • WICHITA, KANSAS 67202 316-262-2691 • FAX 316-262-3003					
Designed by	WDH	Job No.	06237		
Drawn by	DRP	Date	Feb., 2007	Sht. R48 of R111	