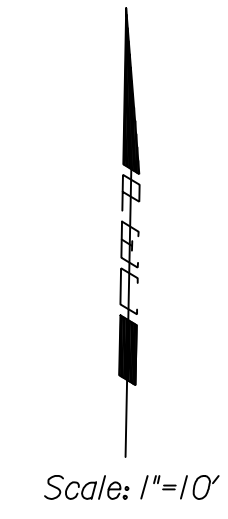
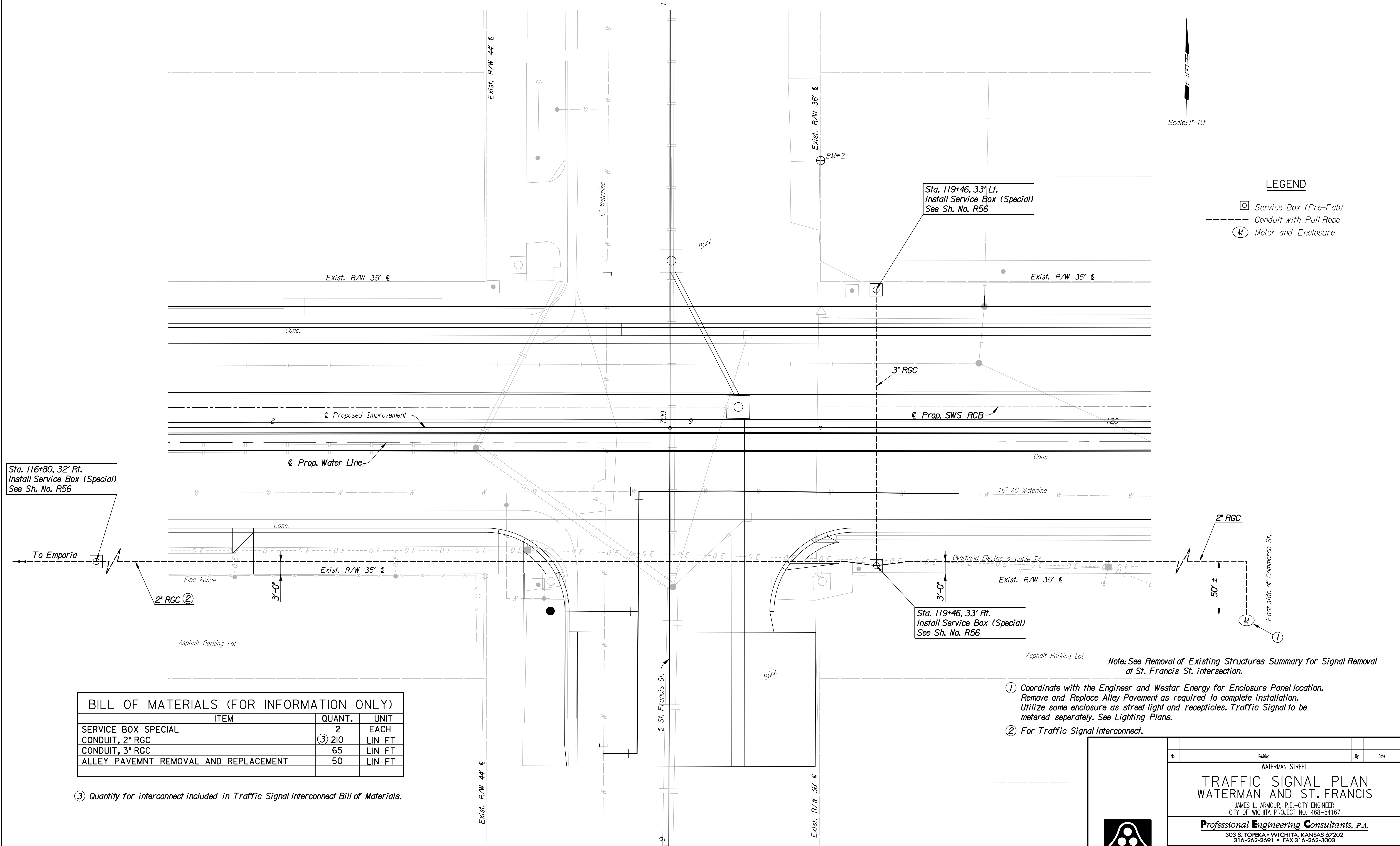


DSNR: WDH OPER: DRP SCALE: 1"=10'
 I:/2006/06237/SIGNAL/06237-000-SIGNALSTFRANCIS.DGN LAST REV: 2-26-2007 BY: drp



LEGEND

- ☐ Service Box (Pre-Fab)
- Conduit with Pull Rope
- (M) Meter and Enclosure

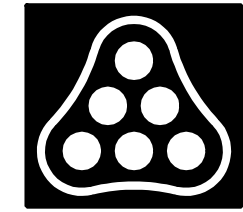


BILL OF MATERIALS (FOR INFORMATION ONLY)

ITEM	QUANT.	UNIT
SERVICE BOX SPECIAL	2	EACH
CONDUIT, 2" RGC	③ 210	LIN FT
CONDUIT, 3" RGC	65	LIN FT
ALLEY PAVEMNT REMOVAL AND REPLACEMENT	50	LIN FT

③ Quantity for interconnect included in Traffic Signal Interconnect Bill of Materials.

- Note: See Removal of Existing Structures Summary for Signal Removal at St. Francis St. intersection.
- ① Coordinate with the Engineer and Westar Energy for Enclosure Panel location. Remove and Replace Alley Pavement as required to complete installation. Utilize same enclosure as street light and receptacles. Traffic Signal to be metered separately. See Lighting Plans.
 - ② For Traffic Signal Interconnect.



No.	Revision	By	Date
WATERMAN STREET			
TRAFFIC SIGNAL PLAN			
WATERMAN AND ST. FRANCIS			
JAMES L. ARMOUR, P.E.—CITY ENGINEER CITY OF WICHITA PROJECT NO. 468-84167			
Professional Engineering Consultants, P.A.			
303 S. TOPEKA • WICHITA, KANSAS 67202 316-262-2691 • FAX 316-262-3003			
Designed by	WDH	Job No.	06237
Drawn by	DRP	Date	Feb., 2007
			Sht. R52 of R111