

- LEGEND**
- Traffic Signal Pole with Mast Arm
 - ← Traffic Signal Head with Backplate
 - ⊞ Pedestrian Signal Head
 - ⊞ Controller (Pole Mounted)
 - ⊞ Service Box (Pre-Fab)
 - - - Conduit
 - ② Signal Phase
 - △ Signal Pole Reference Number
 - (M) Meter and Enclosure

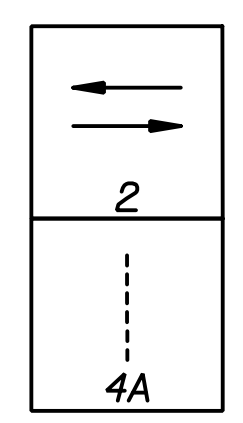
WIRING NOTES

New power supply cabling and conduit shall be run to power source at the NE corner of Waterman St. and Rock Island St. intersection.

CONTROLLER DESCRIPTION

① The existing traffic signal controller shall be removed and reset. All existing time setting shall be retained.

- ② Connect to existing conduit in Pole Base or install as required.
- ③ For Traffic Signal Interconnect.
- ④ See Duct Bank Plans.
- ⑤ Coordinate with the Engineer and Westar Energy for Enclosure Panel location. Remove and Replace Alley Pavement as required to complete installation.



No.		Revision		By		Date	
WATERMAN STREET							
TRAFFIC SIGNAL PLAN							
WATERMAN AND CROSSWALK							
JAMES L. ARMOUR, P.E. - CITY ENGINEER CITY OF WICHITA PROJECT NO. 468-84167							
Professional Engineering Consultants, P.A. 303 S. TOPEKA • WICHITA, KANSAS 67202 316-262-2691 • FAX 316-262-3003							
Designed by	WDH	Job No.	06237	Sht.		R53 of R111	
Drawn by	DRP	Date	Feb., 2007				